



TO DREAM

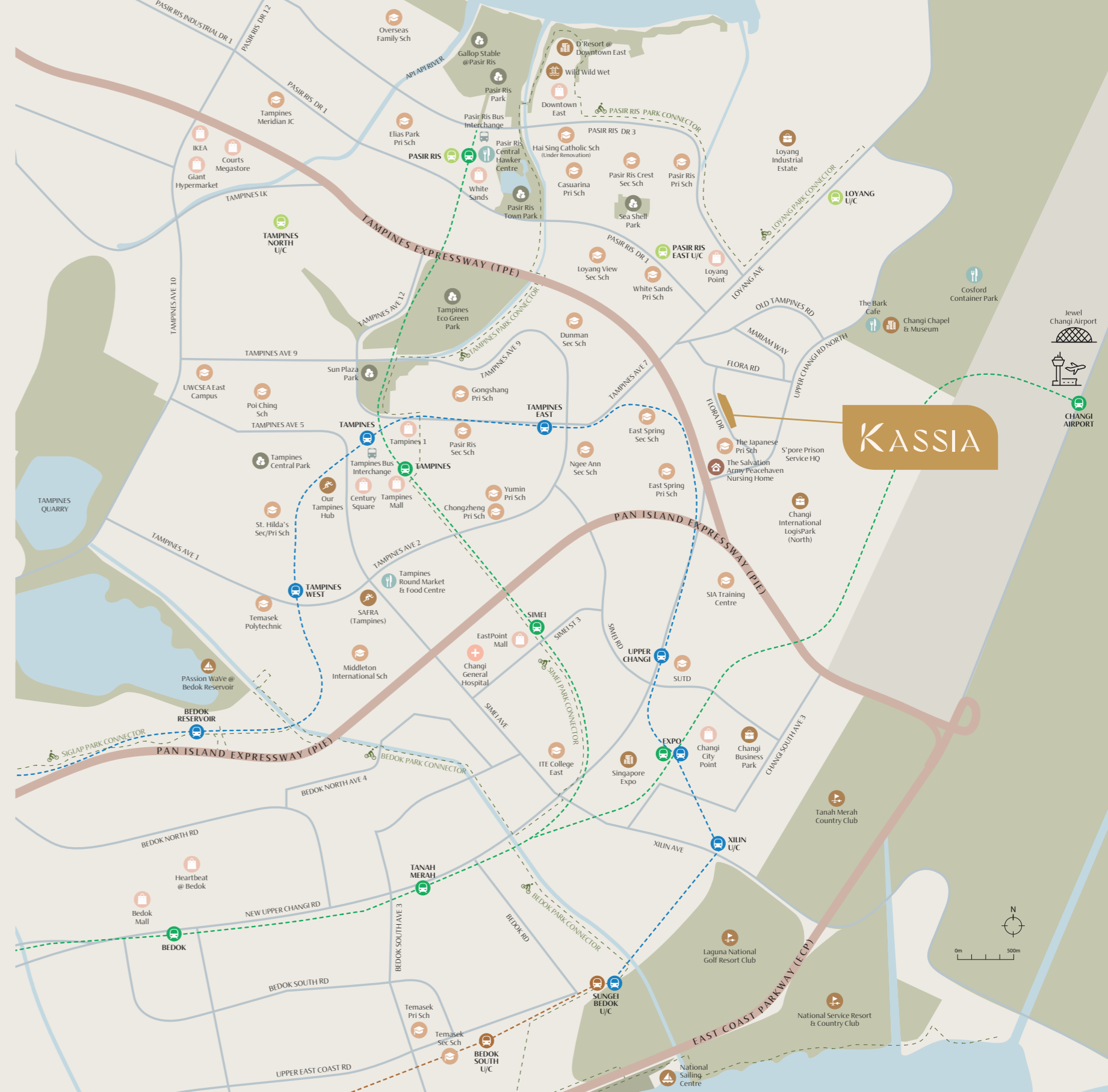
THE GOOD LIFE IN THE EAST

Set in a district of serenity, Kassia residents will find themselves living in a picturesque verdant neighbourhood.

The enclave is well connected to Changi Airport, Pasir Ris, and Tampines for your lifestyle needs.

The Tampines Expressway and Pan Island Expressway are just a short drive from your doorstep. Within minutes, these current and upcoming MRT stations are easily accessible:

- Loyang MRT
- Pasir Ris East MRT
- Pasir Ris MRT Interchange
- Upper Changi MRT



THOUGHTFULLY CURATED, FINELY CRAFTED

SITE PLAN

- 1** Grand Clubhouse (3 storey), consisting of:
 - Basement
 - Arrival Plaza
 - Foliage Decks
 - Cascading Water Feature
 - Management Office
 - 1st Storey
 - Multi-Purpose Rooms (2 nos)
 - Gym
 - Lantern Pavilion
 - Lantern Pond
 - Toilet & Changing Room (male & female)
 - Accessible Toilet
 - 2nd Storey
 - View Deck
 - Sky Leisure Walk (open to sky)
 - Pavilion with BBQ Pit
- 2** 50m Lap Pool (water surfacing area approx. 400m²), consisting of:
 - Sun Deck
 - Forest Spa Pod
 - Water Hammocks (2 nos)
 - Poolside Pavilion
- 3** Children Aqua Play Area, consisting of:
 - Water Play Equipment
 - Aqua Slide
- 4** Poolside Lounge
- 5** Leisure Pool (water surfacing area approx. 250m²), consisting of:
 - Sun Deck
 - Aqua Deck
 - Hammock Lawns (2 nos)
 - Island Pavilion
- 6** Picnic Lawn
- 7** BBQ Pavilion (2 nos)
- 8** Urban Farming Plots (5 nos)
- 9** Floating Pavilion
- 10** Cocoon Floating Pods (2 nos)
- 11** Lotus Pond
- 12** Waterlily Pond
- 13** Meditation Deck
- 14** Taichi Deck
- 15** Fitness Lawn
- 16** Outdoor Fitness Area
- 17** Floating Pod
- 18** Play Court (open to sky)
- 19** Children Playground
- 20** Pennisetum Walk
- 21** Pennisetum Deck
- 22** Tarena Garden
- 23** Arrival Court
- 24** Floral Alcove (1st Storey)
- 25** Chillout Alcove (1st Storey)
- 26** Reading Alcove (1st Storey)
- 27** Alocasia Alcove (1st Storey)
- 28** Entry & Exit to Residential Carpark (basement)
- 29** Entry & Exit to Services Area (basement)
- 30** Pedestrian Entry
- 31** Pedestrian Side Gate
- 32** Guardhouse
- 33** Bicycle Parking Area
- 34** Generator (basement)
- 35** Bin Centre (basement)
- 36** Substation (basement)
- VS** Ventilation Shaft
- Water Tank Position (Roof Level)



K

A
TIMELESS
CANVAS
FOR INSPIRED
LIVING

31 Flora Drive (Singapore 509904)

8	#08-01 (1)b	#08-02 (3)b	#08-03 (3Y)a	#08-04 (2)a	#08-05 (1)a	#08-06 (1+1)a	#08-07 (4)a	#08-08 (2+1)a	#08-09 (2)b
7	#07-01 (1)b	#07-02 (3)b	#07-03 (3Y)a	#07-04 (2)a	#07-05 (1)a	#07-06 (1+1)a	#07-07 (4)a	#07-08 (2+1)a	#07-09 (2)b
6	#06-01 (1)b	#06-02 (3)b	#06-03 (3Y)a	#06-04 (2)a	#06-05 (1)a	#06-06 (1+1)a	#06-07 (4)a	#06-08 (2+1)a	#06-09 (2)b
5	#05-01 (1)b	#05-02 (3)b	#05-03 (3Y)a	#05-04 (2)a	#05-05 (1)a	#05-06 (1+1)a	#05-07 (4)a	#05-08 (2+1)a	#05-09 (2)b
4	#04-01 (1)b	#04-02 (3)b	#04-03 (3Y)a	#04-04 (2)a	#04-05 (1)a	#04-06 (1+1)a	#04-07 (4)a	#04-08 (2+1)a	#04-09 (2)b
3	#03-01 (1)b	#03-02 (3)b	#03-03 (3Y)a	#03-04 (2)a	#03-05 (1)a	#03-06 (1+1)a	#03-07 (4)a	#03-08 (2+1)a	#03-09 (2)b
2	#02-01 (1)b		#02-03 (3Y)a	#02-04 (2)a	#02-05 (1)a	#02-06 (1+1)a	#02-07 (4)a	#02-08 (2+1)a	#02-09 (2)b
1	#01-01 (1)b1		#01-03 (3Y)a1	#01-04 (2)a1		#01-06 (2+1)b1	#01-07 (4)a1	#01-08 (2+1)a1	#01-09 (2)b1
B1	Lobby Carpark								

33 Flora Drive (Singapore 509905)

8	#08-10 (2)c	#08-11 (2+1)a	#08-12 (4)a	#08-13 (1+1)a	#08-14 (1)a	#08-15 (2)a	#08-16 (3Y)a	#08-17 (3)a	#08-18 (2)c
7	#07-10 (2)c	#07-11 (2+1)a	#07-12 (4)a	#07-13 (1+1)a	#07-14 (1)a	#07-15 (2)a	#07-16 (3Y)a	#07-17 (3)a	#07-18 (2)c
6	#06-10 (2)c	#06-11 (2+1)a	#06-12 (4)a	#06-13 (1+1)a	#06-14 (1)a	#06-15 (2)a	#06-16 (3Y)a	#06-17 (3)a	#06-18 (2)c
5	#05-10 (2)c	#05-11 (2+1)a	#05-12 (4)a	#05-13 (1+1)a	#05-14 (1)a	#05-15 (2)a	#05-16 (3Y)a	#05-17 (3)a	#05-18 (2)c
4	#04-10 (2)c	#04-11 (2+1)a	#04-12 (4)a	#04-13 (1+1)a	#04-14 (1)a	#04-15 (2)a	#04-16 (3Y)a	#04-17 (3)a	#04-18 (2)c
3	#03-10 (2)c	#03-11 (2+1)a	#03-12 (4)a	#03-13 (1+1)a	#03-14 (1)a	#03-15 (2)a	#03-16 (3Y)a	#03-17 (3)a	#03-18 (2)c
2	#02-10 (2)c	#02-11 (2+1)a	#02-12 (4)a	#02-13 (1+1)a	#02-14 (1)a	#02-15 (2)a	#02-16 (3Y)a		#02-18 (2)c
1	#01-10 (2)c1	#01-11 (2+1)a1	#01-12 (4)a1	#01-13 (2+1)b1		#01-15 (2)a1	#01-16 (3Y)a1		#01-18 (2)c1
B1	Lobby Carpark								

37 Flora Drive (Singapore 509912)

8	#08-19 (1)b	#08-20 (3)b	#08-21 (3Y)a	#08-22 (2)a	#08-23 (1)a	#08-24 (1+1)a	#08-25 (4)a	#08-26 (2+1)a	#08-27 (2)b
7	#07-19 (1)b	#07-20 (3)b	#07-21 (3Y)a	#07-22 (2)a	#07-23 (1)a	#07-24 (1+1)a	#07-25 (4)a	#07-26 (2+1)a	#07-27 (2)b
6	#06-19 (1)b	#06-20 (3)b	#06-21 (3Y)a	#06-22 (2)a	#06-23 (1)a	#06-24 (1+1)a	#06-25 (4)a	#06-26 (2+1)a	#06-27 (2)b
5	#05-19 (1)b	#05-20 (3)b	#05-21 (3Y)a	#05-22 (2)a	#05-23 (1)a	#05-24 (1+1)a	#05-25 (4)a	#05-26 (2+1)a	#05-27 (2)b
4	#04-19 (1)b	#04-20 (3)b	#04-21 (3Y)a	#04-22 (2)a	#04-23 (1)a	#04-24 (1+1)a	#04-25 (4)a	#04-26 (2+1)a	#04-27 (2)b
3	#03-19 (1)b	#03-20 (3)b	#03-21 (3Y)a	#03-22 (2)a	#03-23 (1)a	#03-24 (1+1)a	#03-25 (4)a	#03-26 (2+1)a	#03-27 (2)b
2	#02-19 (1)b		#02-21 (3Y)a	#02-22 (2)a	#02-23 (1)a	#02-24 (1+1)a	#02-25 (4)a	#02-26 (2+1)a	#02-27 (2)b
1	#01-19 (1)b1		#01-21 (3Y)a1	#01-22 (2)a1		#01-24 (2+1)b1	#01-25 (4)a1	#01-26 (2+1)a1	#01-27 (2)b1
B1	Lobby Carpark								

39 Flora Drive (Singapore 509919)

8	#08-28 (2)b	#08-29 (2+1)a	#08-30 (4)a	#08-31 (1+1)a	#08-32 (1)a	#08-33 (2)a	#08-34 (3Y)a	#08-35 (3)b	#08-36 (1)b
7	#07-28 (2)b	#07-29 (2+1)a	#07-30 (4)a	#07-31 (1+1)a	#07-32 (1)a	#07-33 (2)a	#07-34 (3Y)a	#07-35 (3)b	#07-36 (1)b
6	#06-28 (2)b	#06-29 (2+1)a	#06-30 (4)a	#06-31 (1+1)a	#06-32 (1)a	#06-33 (2)a	#06-34 (3Y)a	#06-35 (3)b	#06-36 (1)b
5	#05-28 (2)b	#05-29 (2+1)a	#05-30 (4)a	#05-31 (1+1)a	#05-32 (1)a	#05-33 (2)a	#05-34 (3Y)a	#05-35 (3)b	#05-36 (1)b
4	#04-28 (2)b	#04-29 (2+1)a	#04-30 (4)a	#04-31 (1+1)a	#04-32 (1)a	#04-33 (2)a	#04-34 (3Y)a	#04-35 (3)b	#04-36 (1)b
3	#03-28 (2)b	#03-29 (2+1)a	#03-30 (4)a	#03-31 (1+1)a	#03-32 (1)a	#03-33 (2)a	#03-34 (3Y)a	#03-35 (3)b	#03-36 (1)b
2	#02-28 (2)b	#02-29 (2+1)a	#02-30 (4)a	#02-31 (1+1)a	#02-32 (1)a	#02-33 (2)a	#02-34 (3Y)a		#02-36 (1)b
1	#01-28 (2)b1	#01-29 (2+1)a1	#01-30 (4)a1	#01-31 (2+1)b1		#01-33 (2)a1	#01-34 (3Y)a1		#01-36 (1)b1
B1	Lobby Carpark								

Legend

- 1 Bedroom
- 1 Bedroom (with study)
- 2 Bedroom
- 2 Bedroom (with study)
- 3 Bedroom
- 3 Bedroom (with yard)
- 4 Bedroom

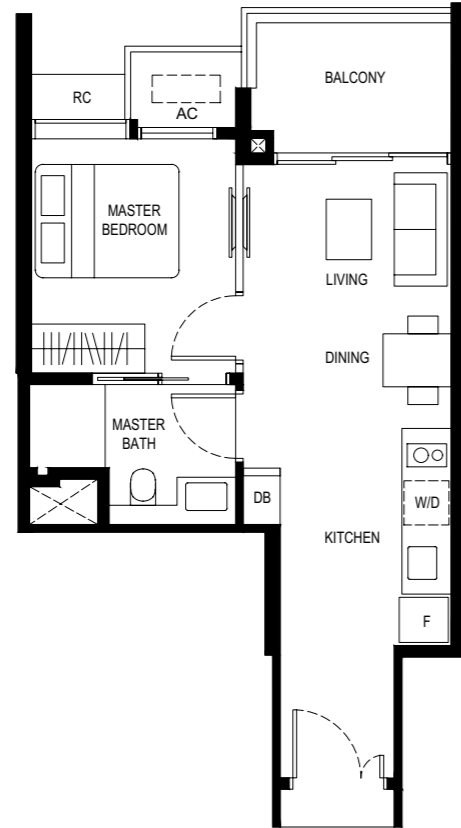
35 Flora Drive (Singapore 509906)
Clubhouse / Management Office

1 BEDROOM

Type (1)a

44 sq m

#02-05 to #08-05
 #02-14* to #08-14*
 #02-23 to #08-23
 #02-32* to #08-32*

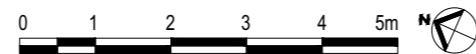


* MIRROR UNIT

LEGEND

- F - FRIDGE DB - DISTRIBUTION BOARD W/D - WASHER CUM DRYER
- AC - AIRCON LEDGE RC - REINFORCED CONCRETE LEDGE (NON-STRATA AREA)
- SERVICES VOID SPACE (NON-STRATA AREA)
- RAINWATER DOWNPIPE SHAFT SPACE (NON-STRATA AREA)
- WALL NOT ALLOWED TO BE HACKED OR ALTERED (INCLUDING BY WAY OF DRILLING)
- NON - STRUCTURAL WALL
- AIRCON CONDENSER

*THE BALCONY SHALL NOT BE ENCLOSED. ONLY APPROVED BALCONY SCREENS ARE TO BE USED. FOR AN ILLUSTRATION OF THE APPROVED BALCONY SCREEN, PLEASE REFER TO PAGE 55 OF THIS BROCHURE

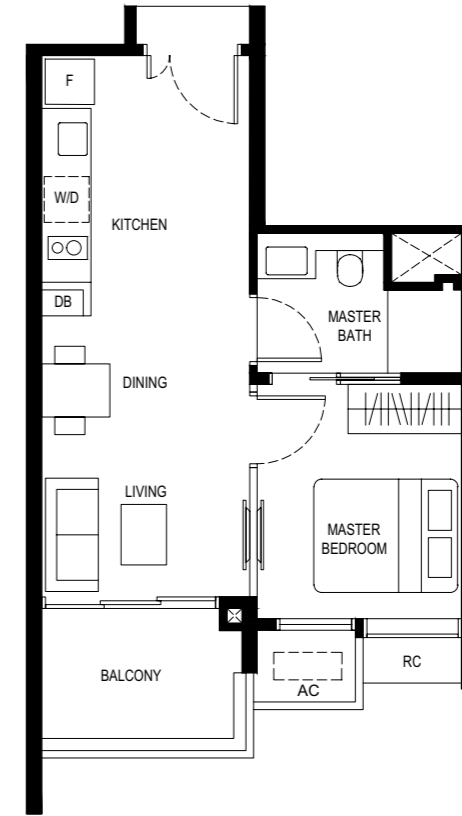


1 BEDROOM

Type (1)b

44 sq m

#02-01 to #08-01
 #02-19 to #08-19
 #02-36* to #08-36*

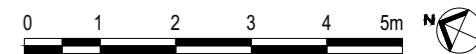


* MIRROR UNIT

LEGEND

- F - FRIDGE DB - DISTRIBUTION BOARD W/D - WASHER CUM DRYER
- AC - AIRCON LEDGE RC - REINFORCED CONCRETE LEDGE (NON-STRATA AREA)
- SERVICES VOID SPACE (NON-STRATA AREA)
- RAINWATER DOWNPIPE SHAFT SPACE (NON-STRATA AREA)
- WALL NOT ALLOWED TO BE HACKED OR ALTERED (INCLUDING BY WAY OF DRILLING)
- NON - STRUCTURAL WALL
- AIRCON CONDENSER

*THE BALCONY SHALL NOT BE ENCLOSED. ONLY APPROVED BALCONY SCREENS ARE TO BE USED. FOR AN ILLUSTRATION OF THE APPROVED BALCONY SCREEN, PLEASE REFER TO PAGE 55 OF THIS BROCHURE



1 BEDROOM

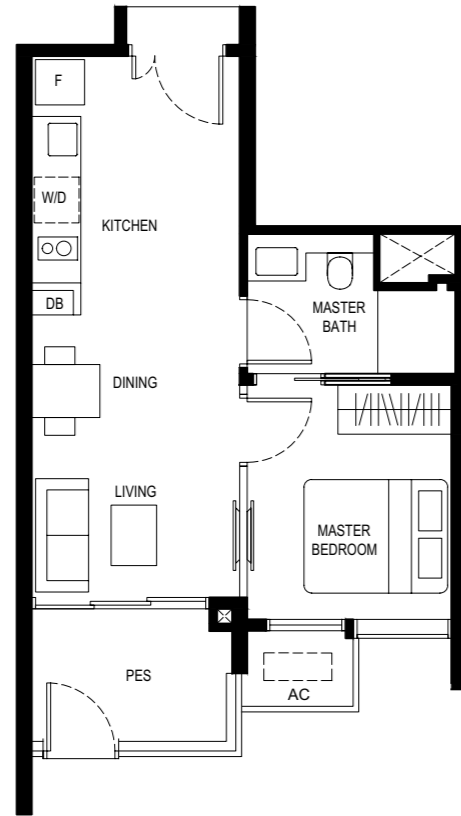
Type (1)b1

44 sq m

#01-01

#01-19

#01-36*



* MIRROR UNIT

LEGEND

F - FRIDGE DB - DISTRIBUTION BOARD W/D - WASHER CUM DRYER

AC - AIRCON LEDGE PES - PRIVATE ENCLOSED SPACE

SERVICES VOID SPACE (NON-STRATA AREA)

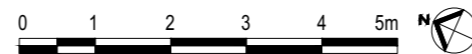
RAINWATER DOWNPIPE SHAFT SPACE (NON-STRATA AREA)

WALL NOT ALLOWED TO BE HACKED OR ALTERED (INCLUDING BY WAY OF DRILLING)

NON - STRUCTURAL WALL

AIRCON CONDENSER

*THE BALCONY SHALL NOT BE ENCLOSED. ONLY APPROVED BALCONY SCREENS ARE TO BE USED. FOR AN ILLUSTRATION OF THE APPROVED BALCONY SCREEN, PLEASE REFER TO PAGE 55 OF THIS BROCHURE



1 BEDROOM (with study)

Type (1+1)a

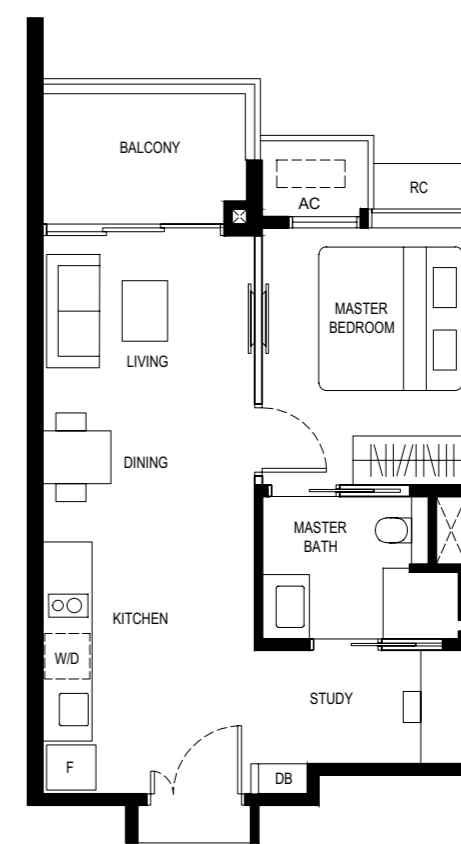
51 sq m

#02-06 to #08-06

#02-13* to #08-13*

#02-24 to #08-24

#02-31* to #08-31*



* MIRROR UNIT

LEGEND

F - FRIDGE DB - DISTRIBUTION BOARD W/D - WASHER CUM DRYER

AC - AIRCON LEDGE RC - REINFORCED CONCRETE LEDGE (NON-STRATA AREA)

SERVICES VOID SPACE (NON-STRATA AREA)

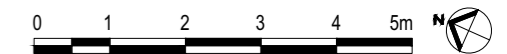
RAINWATER DOWNPIPE SHAFT SPACE (NON-STRATA AREA)

WALL NOT ALLOWED TO BE HACKED OR ALTERED (INCLUDING BY WAY OF DRILLING)

NON - STRUCTURAL WALL

AIRCON CONDENSER

*THE BALCONY SHALL NOT BE ENCLOSED. ONLY APPROVED BALCONY SCREENS ARE TO BE USED. FOR AN ILLUSTRATION OF THE APPROVED BALCONY SCREEN, PLEASE REFER TO PAGE 55 OF THIS BROCHURE

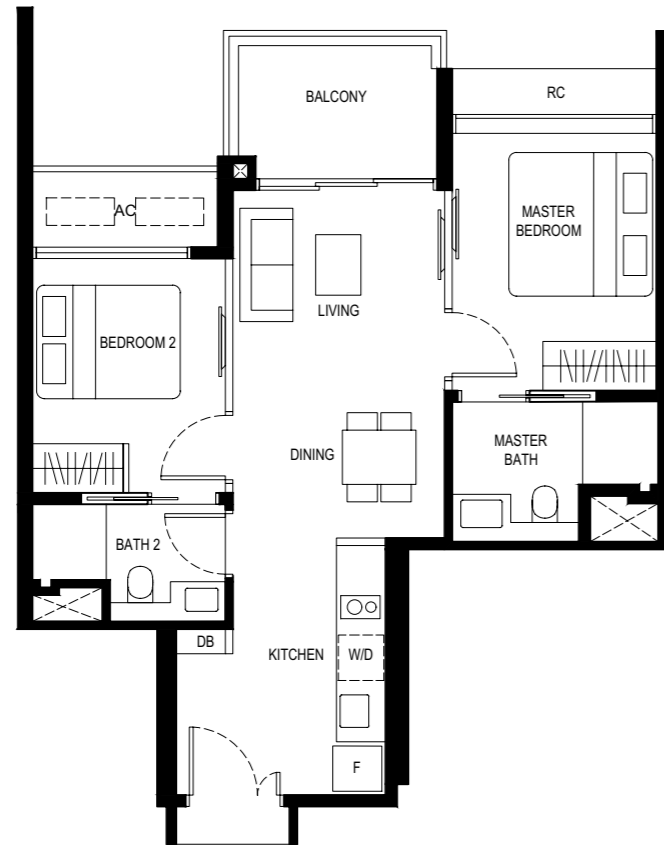


2 BEDROOM

Type (2)a

61 sq m

#02-04 to #08-04
 #02-15* to #08-15*
 #02-22 to #08-22
 #02-33* to #08-33*

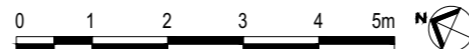


* MIRROR UNIT

LEGEND

- F - FRIDGE DB - DISTRIBUTION BOARD W/D - WASHER CUM DRYER
- AC - AIRCON LEDGE RC - REINFORCED CONCRETE LEDGE (NON-STRATA AREA)
- SERVICES VOID SPACE (NON-STRATA AREA)
- RAINWATER DOWNPIPE SHAFT SPACE (NON-STRATA AREA)
- WALL NOT ALLOWED TO BE HACKED OR ALTERED (INCLUDING BY WAY OF DRILLING)
- NON - STRUCTURAL WALL
- AIRCON CONDENSER

*THE BALCONY SHALL NOT BE ENCLOSED. ONLY APPROVED BALCONY SCREENS ARE TO BE USED. FOR AN ILLUSTRATION OF THE APPROVED BALCONY SCREEN, PLEASE REFER TO PAGE 55 OF THIS BROCHURE



2 BEDROOM

Type (2)a1

61 sq m

#01-04
 #01-15*
 #01-22
 #01-33*

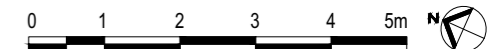


* MIRROR UNIT

LEGEND

- F - FRIDGE DB - DISTRIBUTION BOARD W/D - WASHER CUM DRYER
- AC - AIRCON LEDGE PES - PRIVATE ENCLOSED SPACE
- SERVICES VOID SPACE (NON-STRATA AREA)
- RAINWATER DOWNPIPE SHAFT SPACE (NON-STRATA AREA)
- WALL NOT ALLOWED TO BE HACKED OR ALTERED (INCLUDING BY WAY OF DRILLING)
- NON - STRUCTURAL WALL
- AIRCON CONDENSER

*THE BALCONY SHALL NOT BE ENCLOSED. ONLY APPROVED BALCONY SCREENS ARE TO BE USED. FOR AN ILLUSTRATION OF THE APPROVED BALCONY SCREEN, PLEASE REFER TO PAGE 55 OF THIS BROCHURE



2 BEDROOM

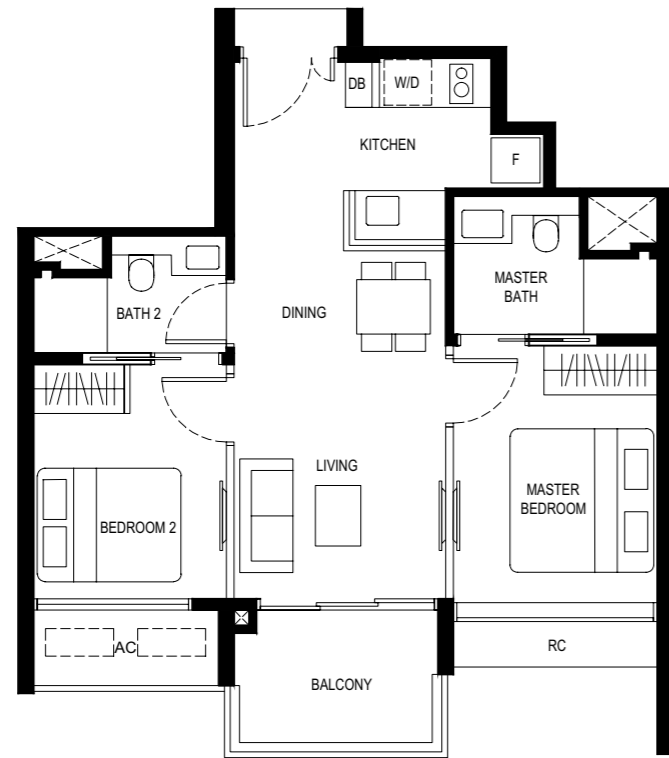
Type (2)b

61 sq m

#02-09 to #08-09

#02-27 to #08-27

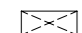




#02-28* to #08-28*



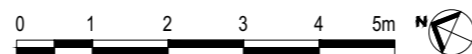
* MIRROR UNIT

LEGEND

F - FRIDGE DB - DISTRIBUTION BOARD W/D - WASHER CUM DRYER
AC - AIRCON LEDGE RC - REINFORCED CONCRETE LEDGE (NON-STRATA AREA)

-  SERVICES VOID SPACE (NON-STRATA AREA)
-  RAINWATER DOWNPIPE SHAFT SPACE (NON-STRATA AREA)
-  WALL NOT ALLOWED TO BE HACKED OR ALTERED (INCLUDING BY WAY OF DRILLING)
-  NON - STRUCTURAL WALL
-  AIRCON CONDENSER

*THE BALCONY SHALL NOT BE ENCLOSED. ONLY APPROVED BALCONY SCREENS ARE TO BE USED. FOR AN ILLUSTRATION OF THE APPROVED BALCONY SCREEN, PLEASE REFER TO PAGE 55 OF THIS BROCHURE



2 BEDROOM

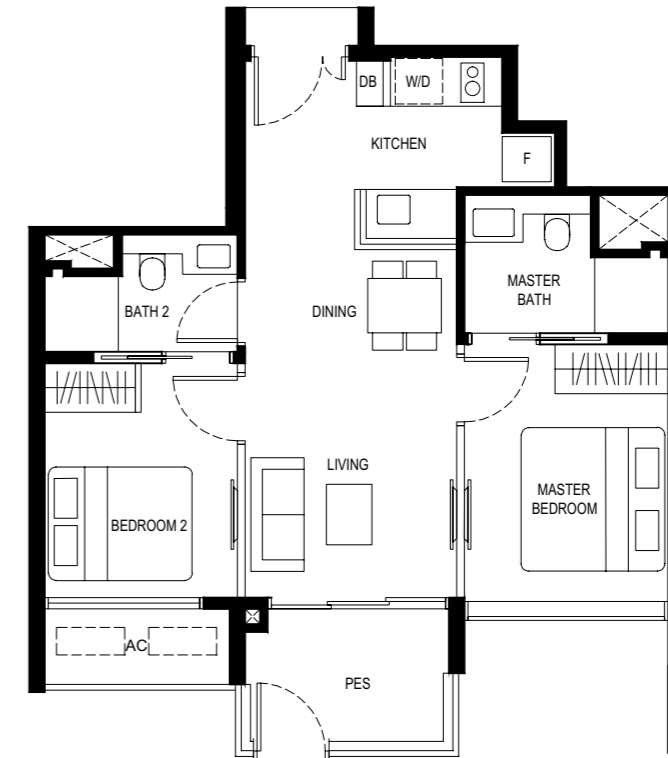
Type (2)b1

61 sq m

#01-09

#01-27

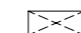




#01-28*



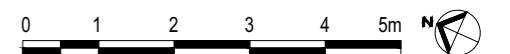
* MIRROR UNIT

LEGEND

F - FRIDGE DB - DISTRIBUTION BOARD W/D - WASHER CUM DRYER
AC - AIRCON LEDGE PES - PRIVATE ENCLOSED SPACE

-  SERVICES VOID SPACE (NON-STRATA AREA)
-  RAINWATER DOWNPIPE SHAFT SPACE (NON-STRATA AREA)
-  WALL NOT ALLOWED TO BE HACKED OR ALTERED (INCLUDING BY WAY OF DRILLING)
-  NON - STRUCTURAL WALL
-  AIRCON CONDENSER

*THE BALCONY SHALL NOT BE ENCLOSED. ONLY APPROVED BALCONY SCREENS ARE TO BE USED. FOR AN ILLUSTRATION OF THE APPROVED BALCONY SCREEN, PLEASE REFER TO PAGE 55 OF THIS BROCHURE

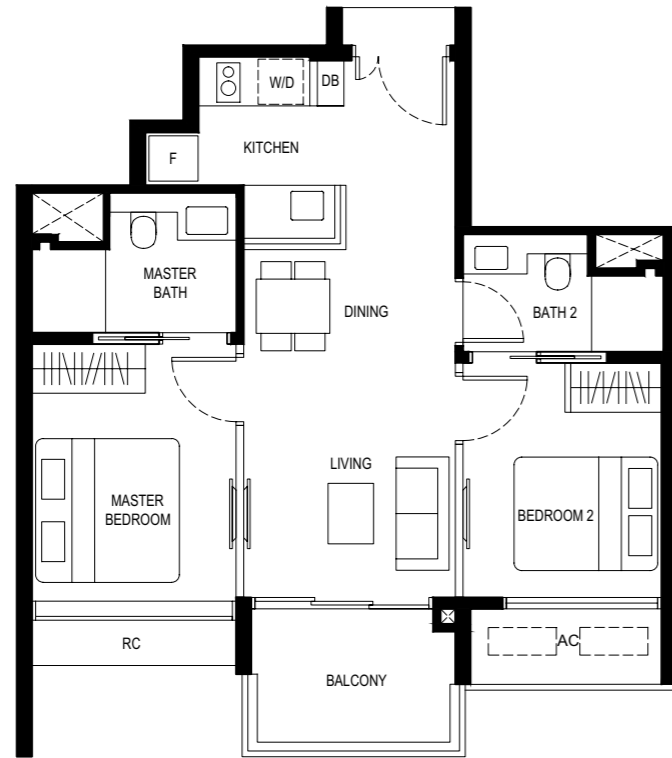


2 BEDROOM

Type (2)c

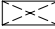




61 sq m

#02-10 to #08-10
#02-18* to #08-18*

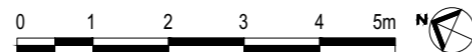


* MIRROR UNIT

LEGEND

- F - FRIDGE DB - DISTRIBUTION BOARD W/D - WASHER CUM DRYER
- AC - AIRCON LEDGE RC - REINFORCED CONCRETE LEDGE (NON-STRATA AREA)
-  SERVICES VOID SPACE (NON-STRATA AREA)
-  RAINWATER DOWNPIPE SHAFT SPACE (NON-STRATA AREA)
-  WALL NOT ALLOWED TO BE HACKED OR ALTERED (INCLUDING BY WAY OF DRILLING)
-  NON - STRUCTURAL WALL
-  AIRCON CONDENSER

*THE BALCONY SHALL NOT BE ENCLOSED. ONLY APPROVED BALCONY SCREENS ARE TO BE USED. FOR AN ILLUSTRATION OF THE APPROVED BALCONY SCREEN, PLEASE REFER TO PAGE 55 OF THIS BROCHURE

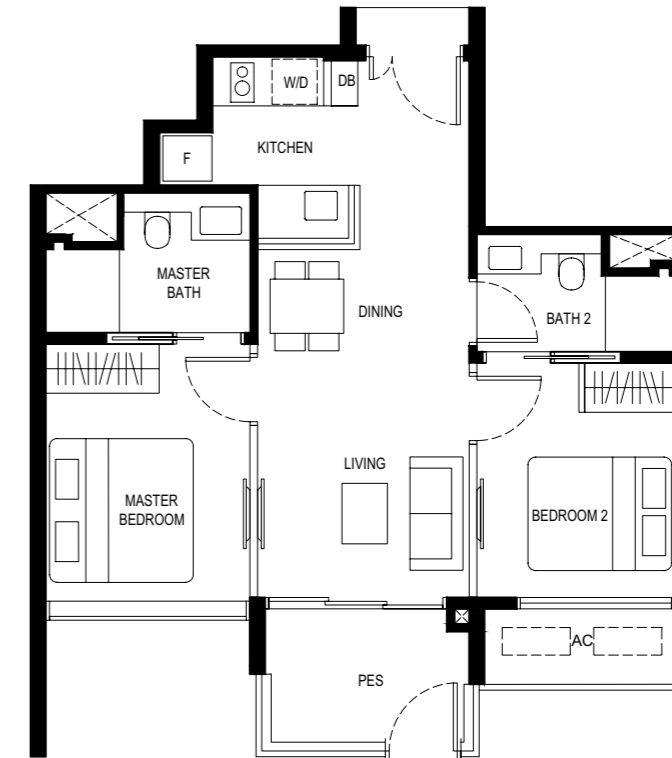


2 BEDROOM

Type (2)c1

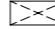



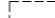
61 sq m

#01-10
#01-18*

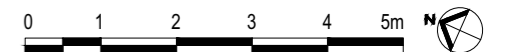


* MIRROR UNIT

LEGEND

- F - FRIDGE DB - DISTRIBUTION BOARD W/D - WASHER CUM DRYER
- AC - AIRCON LEDGE PES - PRIVATE ENCLOSED SPACE
-  SERVICES VOID SPACE (NON-STRATA AREA)
-  RAINWATER DOWNPIPE SHAFT SPACE (NON-STRATA AREA)
-  WALL NOT ALLOWED TO BE HACKED OR ALTERED (INCLUDING BY WAY OF DRILLING)
-  NON - STRUCTURAL WALL
-  AIRCON CONDENSER

*THE BALCONY SHALL NOT BE ENCLOSED. ONLY APPROVED BALCONY SCREENS ARE TO BE USED. FOR AN ILLUSTRATION OF THE APPROVED BALCONY SCREEN, PLEASE REFER TO PAGE 55 OF THIS BROCHURE



2 BEDROOM (with study)

Type (2+1)a

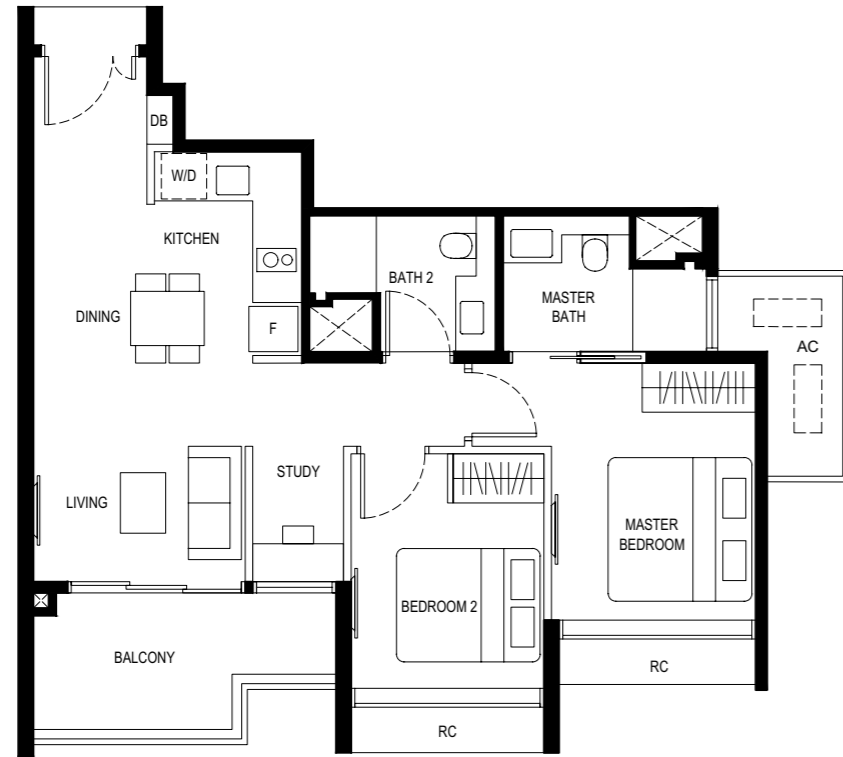
70 sq m

#02-08 to #08-08

#02-11* to #08-11*

#02-26 to #08-26

#02-29 to #08-29*



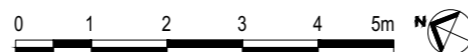
* MIRROR UNIT

LEGEND

F - FRIDGE DB - DISTRIBUTION BOARD W/D - WASHER CUM DRYER
AC - AIRCON LEDGE RC - REINFORCED CONCRETE LEDGE (NON-STRATA AREA)

- SERVICES VOID SPACE (NON-STRATA AREA)
- RAINWATER DOWNPIPE SHAFT SPACE (NON-STRATA AREA)
- WALL NOT ALLOWED TO BE HACKED OR ALTERED (INCLUDING BY WAY OF DRILLING)
- NON - STRUCTURAL WALL
- AIRCON CONDENSER

*THE BALCONY SHALL NOT BE ENCLOSED. ONLY APPROVED BALCONY SCREENS ARE TO BE USED. FOR AN ILLUSTRATION OF THE APPROVED BALCONY SCREEN, PLEASE REFER TO PAGE 55 OF THIS BROCHURE



2 BEDROOM (with study)

Type (2+1)a1

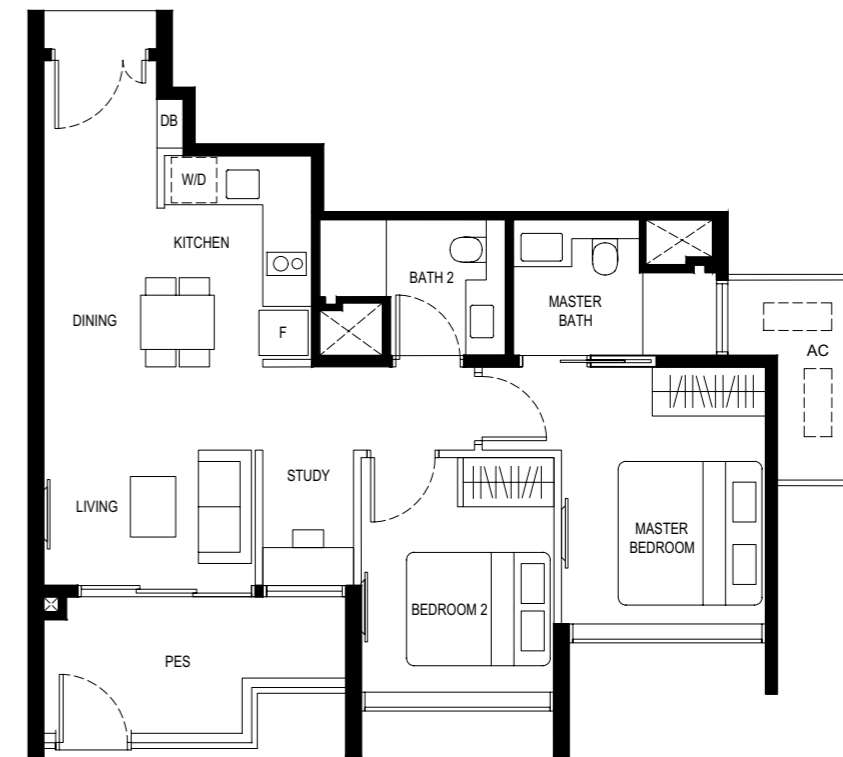
70 sq m

#01-08

#01-11*

#01-26

#01-29*



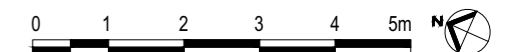
* MIRROR UNIT

LEGEND

F - FRIDGE DB - DISTRIBUTION BOARD W/D - WASHER CUM DRYER
AC - AIRCON LEDGE PES - PRIVATE ENCLOSED SPACE

- SERVICES VOID SPACE (NON-STRATA AREA)
- RAINWATER DOWNPIPE SHAFT SPACE (NON-STRATA AREA)
- WALL NOT ALLOWED TO BE HACKED OR ALTERED (INCLUDING BY WAY OF DRILLING)
- NON - STRUCTURAL WALL
- AIRCON CONDENSER

*THE BALCONY SHALL NOT BE ENCLOSED. ONLY APPROVED BALCONY SCREENS ARE TO BE USED. FOR AN ILLUSTRATION OF THE APPROVED BALCONY SCREEN, PLEASE REFER TO PAGE 55 OF THIS BROCHURE



2 BEDROOM (with study)

Type (2+1)b1

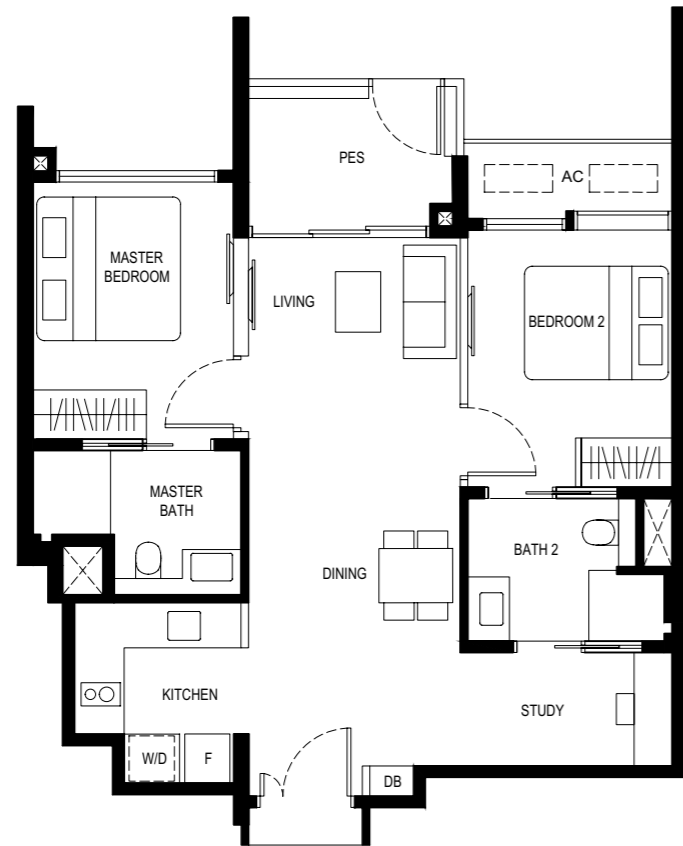
72 sq m

#01-06

#01-13*

#01-24

#01-31*



*MIRROR UNIT

LEGEND

F - FRIDGE DB - DISTRIBUTION BOARD W/D - WASHER CUM DRYER

AC - AIRCON LEDGE PES - PRIVATE ENCLOSED SPACE

SERVICES VOID SPACE (NON-STRATA AREA)

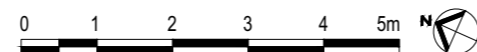
RAINWATER DOWNPIPE SHAFT SPACE (NON-STRATA AREA)

WALL NOT ALLOWED TO BE HACKED OR ALTERED (INCLUDING BY WAY OF DRILLING)

NON - STRUCTURAL WALL

AIRCON CONDENSER

*THE BALCONY SHALL NOT BE ENCLOSED. ONLY APPROVED BALCONY SCREENS ARE TO BE USED. FOR AN ILLUSTRATION OF THE APPROVED BALCONY SCREEN, PLEASE REFER TO PAGE 55 OF THIS BROCHURE



3 BEDROOM

Type (3)a

86 sq m

#03-17 to #08-17



LEGEND

F - FRIDGE DB - DISTRIBUTION BOARD W/D - WASHER CUM DRYER

AC - AIRCON LEDGE RC - REINFORCED CONCRETE LEDGE (NON-STRATA AREA)

SERVICES VOID SPACE (NON-STRATA AREA)

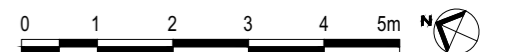
RAINWATER DOWNPIPE SHAFT SPACE (NON-STRATA AREA)

WALL NOT ALLOWED TO BE HACKED OR ALTERED (INCLUDING BY WAY OF DRILLING)

NON - STRUCTURAL WALL

AIRCON CONDENSER

*THE BALCONY SHALL NOT BE ENCLOSED. ONLY APPROVED BALCONY SCREENS ARE TO BE USED. FOR AN ILLUSTRATION OF THE APPROVED BALCONY SCREEN, PLEASE REFER TO PAGE 55 OF THIS BROCHURE



3 BEDROOM

Type (3)b

84 sq m

#03-02 to #08-02
 #03-20 to #08-20
 #03-35* to #08-35*



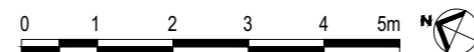
* MIRROR UNIT

LEGEND

F - FRIDGE DB - DISTRIBUTION BOARD W/D - WASHER CUM DRYER
 AC - AIRCON LEDGE RC - REINFORCED CONCRETE LEDGE (NON-STRATA AREA)

- SERVICES VOID SPACE (NON-STRATA AREA)
- RAINWATER DOWNPIPE SHAFT SPACE (NON-STRATA AREA)
- WALL NOT ALLOWED TO BE HACKED OR ALTERED (INCLUDING BY WAY OF DRILLING)
- NON - STRUCTURAL WALL
- AIRCON CONDENSER

*THE BALCONY SHALL NOT BE ENCLOSED. ONLY APPROVED BALCONY SCREENS ARE TO BE USED. FOR AN ILLUSTRATION OF THE APPROVED BALCONY SCREEN, PLEASE REFER TO PAGE 55 OF THIS BROCHURE



3 BEDROOM (with yard)

Type (3Y)a

98 sq m

#02-03 to #08-03
 #02-16* to #08-16*
 #02-21 to #08-21
 #02-34* to #08-34*



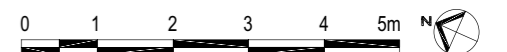
* MIRROR UNIT

LEGEND

F - FRIDGE DB - DISTRIBUTION BOARD WC - WATER CLOSET W - WASHER
 D - DRYER AC - AIRCON LEDGE HS - HOUSEHOLD SHELTER

- RC - REINFORCED CONCRETE LEDGE (NON-STRATA AREA)
- SERVICES VOID SPACE (NON-STRATA AREA)
- RAINWATER DOWNPIPE SHAFT SPACE (NON-STRATA AREA)
- WALL NOT ALLOWED TO BE HACKED OR ALTERED (INCLUDING BY WAY OF DRILLING)
- NON - STRUCTURAL WALL
- AIRCON CONDENSER

*THE BALCONY SHALL NOT BE ENCLOSED. ONLY APPROVED BALCONY SCREENS ARE TO BE USED. FOR AN ILLUSTRATION OF THE APPROVED BALCONY SCREEN, PLEASE REFER TO PAGE 55 OF THIS BROCHURE



3 BEDROOM (with yard)

Type (3Y)a1

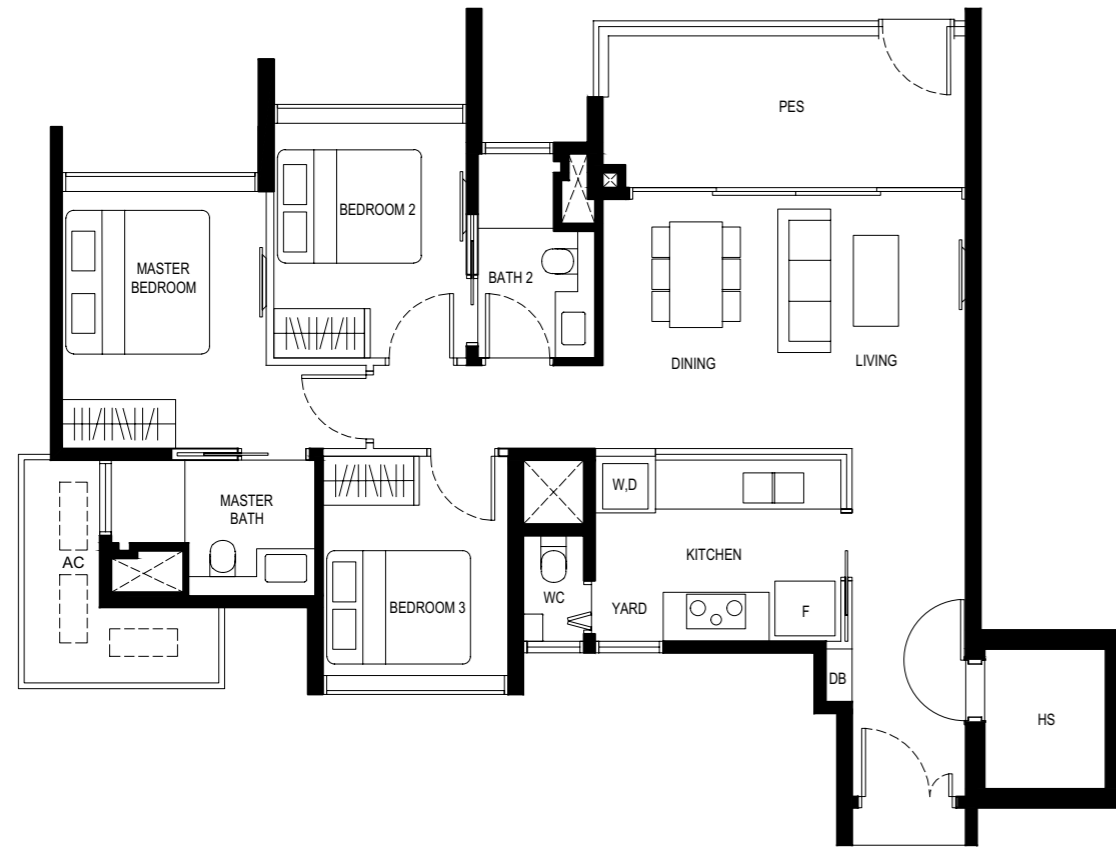
98 sq m

#01-03

#01-16*

#01-21

#01-34*



* MIRROR UNIT

LEGEND

F - FRIDGE DB - DISTRIBUTION BOARD WC - WATER CLOSET W - WASHER D - DRYER

AC - AIRCON LEDGE HS - HOUSEHOLD SHELTER PES - PRIVATE ENCLOSED SPACE

SERVICES VOID SPACE (NON-STRATA AREA)

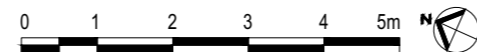
RAINWATER DOWNPIPE SHAFT SPACE (NON-STRATA AREA)

WALL NOT ALLOWED TO BE HACKED OR ALTERED (INCLUDING BY WAY OF DRILLING)

NON - STRUCTURAL WALL

AIRCON CONDENSER

*THE BALCONY SHALL NOT BE ENCLOSED. ONLY APPROVED BALCONY SCREENS ARE TO BE USED. FOR AN ILLUSTRATION OF THE APPROVED BALCONY SCREEN, PLEASE REFER TO PAGE 55 OF THIS BROCHURE



4 BEDROOM

Type (4)a

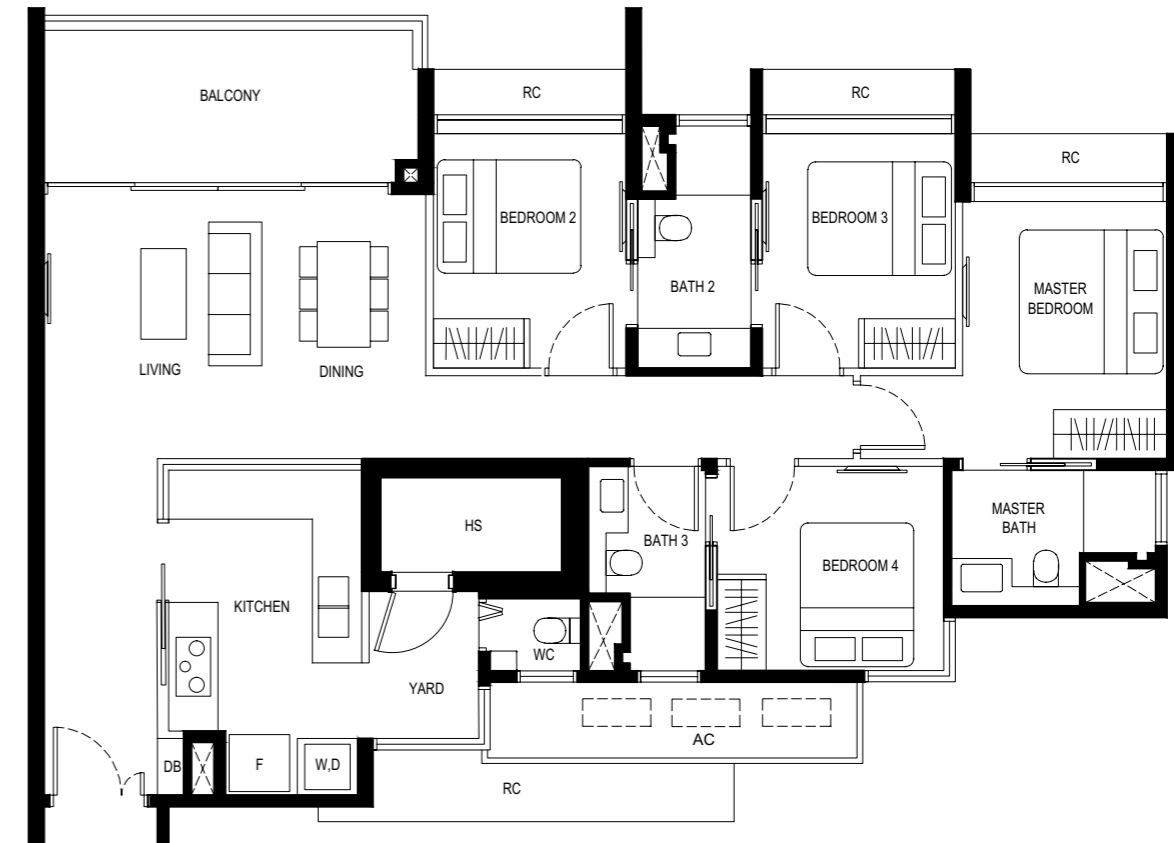
125 sq m

#02-07 to #08-07

#02-12* to #08-12*

#02-25 to #08-25

#02-30* to #08-30*



* MIRROR UNIT

LEGEND

F - FRIDGE DB - DISTRIBUTION BOARD WC - WATER CLOSET W - WASHER

D - DRYER AC - AIRCON LEDGE HS - HOUSEHOLD SHELTER

RC - REINFORCED CONCRETE LEDGE (NON-STRATA AREA)

SERVICES VOID SPACE (NON-STRATA AREA)

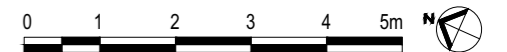
RAINWATER DOWNPIPE SHAFT SPACE (NON-STRATA AREA)

WALL NOT ALLOWED TO BE HACKED OR ALTERED (INCLUDING BY WAY OF DRILLING)

NON - STRUCTURAL WALL

AIRCON CONDENSER

*THE BALCONY SHALL NOT BE ENCLOSED. ONLY APPROVED BALCONY SCREENS ARE TO BE USED. FOR AN ILLUSTRATION OF THE APPROVED BALCONY SCREEN, PLEASE REFER TO PAGE 55 OF THIS BROCHURE



4 BEDROOM

Type (4)a1

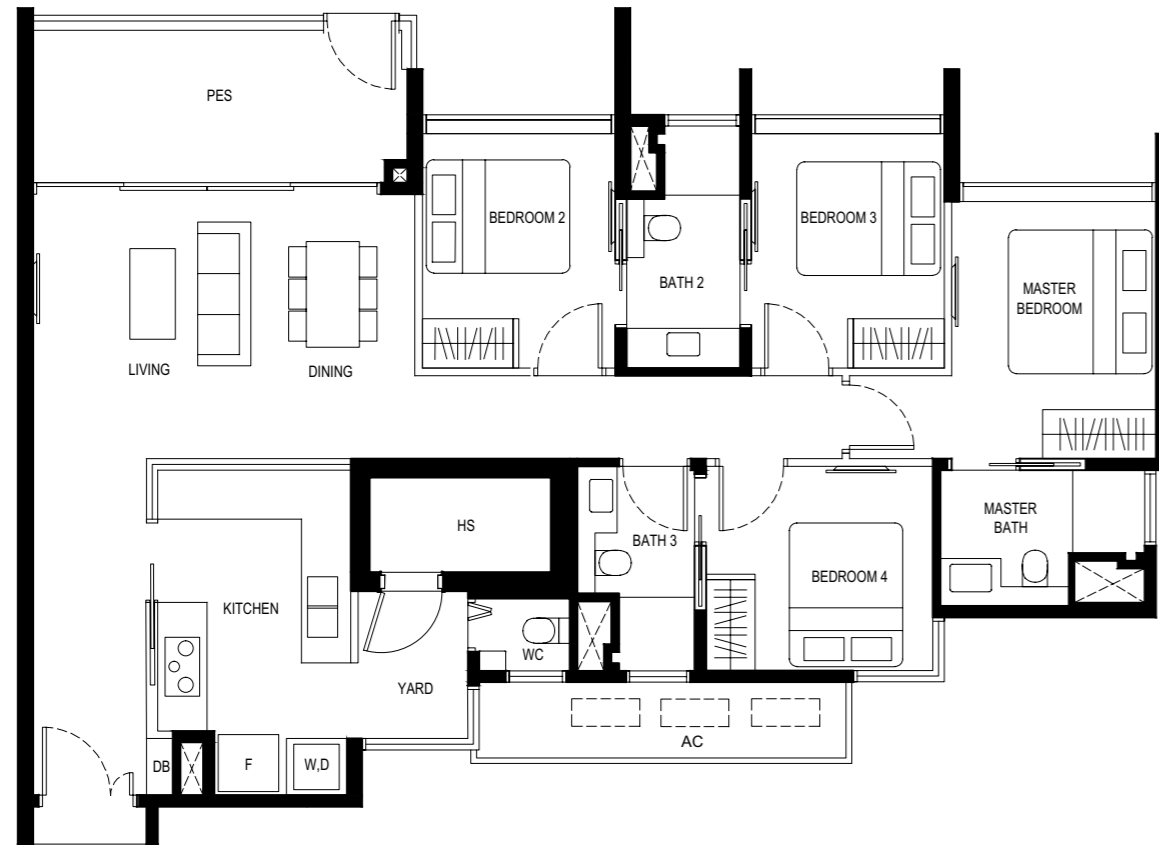
125 sq m

#01-07

#01-12*

#01-25

#01-30*



* MIRROR UNIT

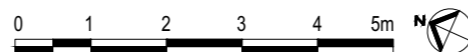
LEGEND

F - FRIDGE DB - DISTRIBUTION BOARD WC - WATER CLOSET W - WASHER D - DRYER

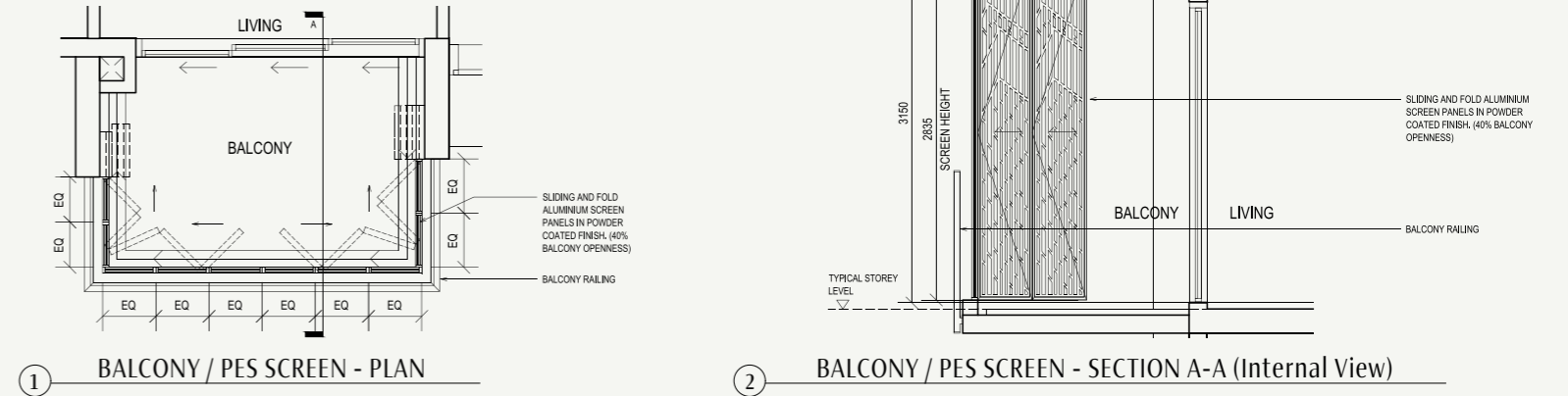
AC - AIRCON LEDGE HS - HOUSEHOLD SHELTER PES - PRIVATE ENCLOSED SPACE

- SERVICES VOID SPACE (NON-STRATA AREA)
- RAINWATER DOWNPIPE SHAFT SPACE (NON-STRATA AREA)
- WALL NOT ALLOWED TO BE HACKED OR ALTERED (INCLUDING BY WAY OF DRILLING)
- NON - STRUCTURAL WALL
- AIRCON CONDENSER

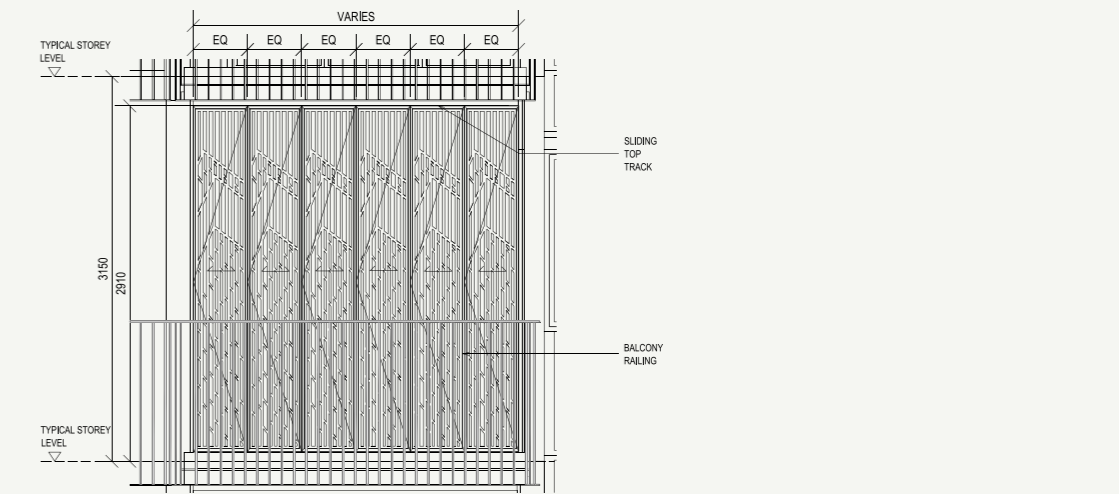
*THE BALCONY SHALL NOT BE ENCLOSED. ONLY APPROVED BALCONY SCREENS ARE TO BE USED. FOR AN ILLUSTRATION OF THE APPROVED BALCONY SCREEN, PLEASE REFER TO PAGE 55 OF THIS BROCHURE



APPROVED SCREEN FOR BALCONY AND PRIVATE ENCLOSED SPACE (PES)



2 BALCONY / PES SCREEN - SECTION A-A (Internal View)



3 BALCONY / PES SCREEN - FRONT ELEVATION (External View)

NOTES:

1. ON SITE VERIFICATION IS NECESSARY TO OBTAIN ACTUAL MEASUREMENT PRIOR TO FABRICATION AND INSTALLATION OF THE APPROVED SCREEN FOR BALCONY & PES
2. THE BALCONY / PES SHALL NOT BE ENCLOSED UNLESS WITH THE APPROVED SCREEN AS SHOWN ABOVE
3. THE COST OF SCREEN AND INSTALLATION SHALL BE BORNE BY THE PURCHASER.

EQ - EQUIDISTANT

Approved BP No.: A1369-04139-2018-BP01 dated 20 JUL 2023.

A1369-04139-2018-BP02 dated 29 JAN 2024.