



- + 30KM OF COASTLINE
- + 2,000HA OF WATERFRONT LAND
- + 2,00HA+ NATURE NETWORK
- + 9,000 NEW HOMES
- + WORLD CLASS LEISURE & TOURIST DESTINATION

1 RELOCATION OF PORTS (By 2040)

Pasir Panjang Terminal will be freed up to be part of the new waterfront city and a destination for tourism, commercial and residential uses.

2 EXTENSION OF PASIR PANJANG PARK

A new 2.2km section in Pasir Panjang Park will be part of a 17km route spanning from Labrador Nature Park to West Coast Park that everyone can enjoy more walking and cycling spaces

Greater Southern Waterfront

Five times the size of Marina Bay, Singapore's next great waterfront living will connect you to Marina Bay, Jurong Lake and no less than 13 parks including destination parks – HortPark, Labrador Nature Park and West Coast Park

3 PASIR PANJANG POWER DISTRICT

The power station will be moved underground to free up space for a commercial development to sit atop, turning the area into a lifestyle hub.

4 KEPPEL CLUB REDEVELOPMENT

The 48ha site will be redeveloped to house around 9,000 residential units – about 6,000 public housing flats and around 3,000 private residential units

5 LABRADOR NATURE PARK NETWORK

More than 200 hectares of green spaces will be established, adding 30km to Singapore's nature trails and park connectors.

6 SENTOSA-BRANI MASTERPLAN

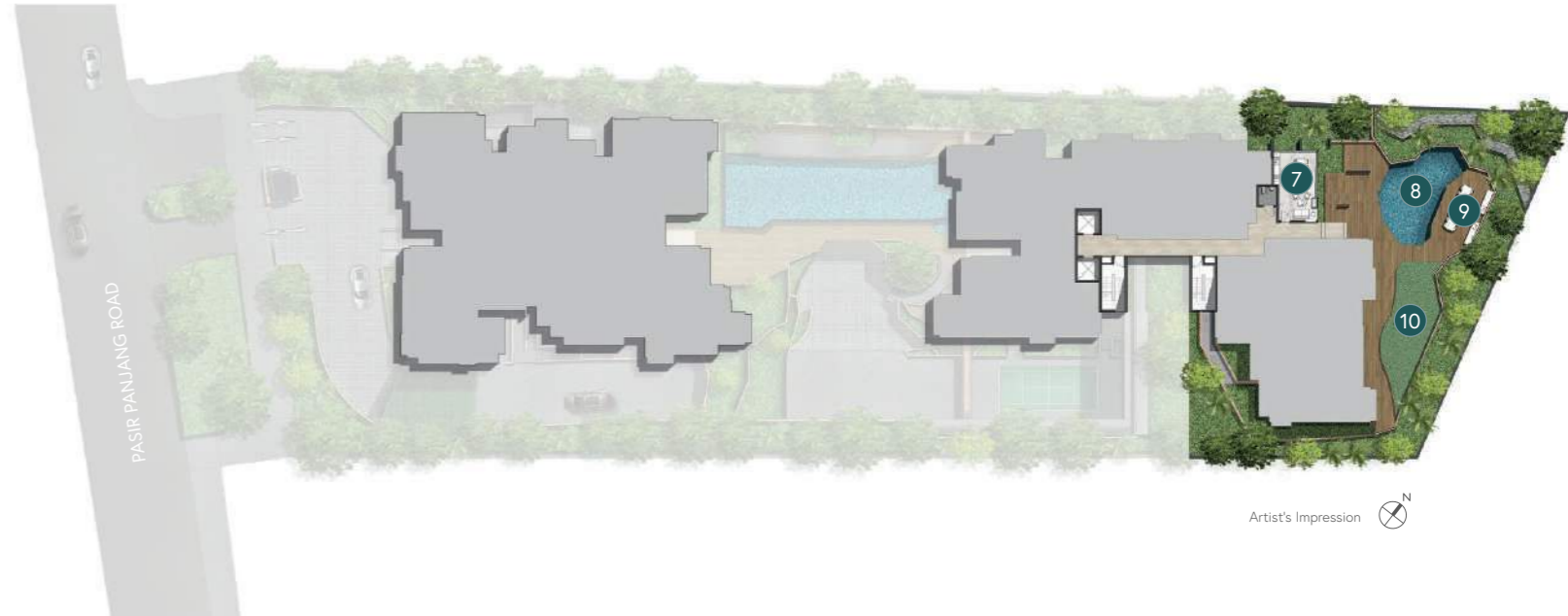
The islands will be transformed into a leisure and tourism destination including world class attractions, beach experiences, expanded nature and heritage trails.

THE HILSHORE

SITE PLAN



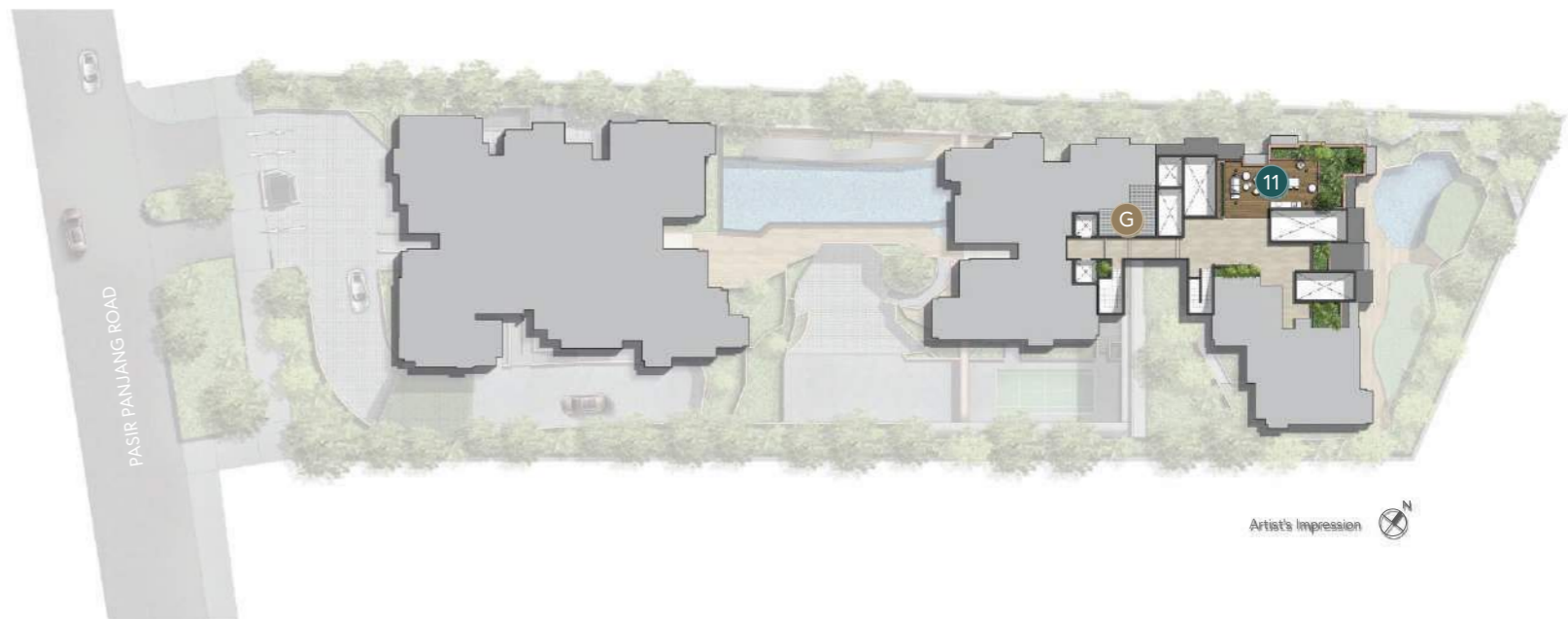
292 LEVEL 3



LANDSCAPE DECK



292 LEVEL 5



FACILITIES

- 1 ARRIVAL COURTYARD
- 2 BADMINTON COURT
- 3 SWIMMING POOL
- 4 POOL DECK
- 5 JACUZZI
- 6 GYMNASIUM
- 7 HILLSHORE CLUBHOUSE
- 8 PLAY POOL
- 9 BBQ PAVILION
- 10 PLAY COVE
- 11 SKY GRILL

ANCILLARY

- A GUARD HOUSE
- B PEDESTRIAN GATE
- C DRIVEWAY TO ARRIVAL COURTYARD/
BASEMENT 1 CARPARK
- D SUBSTATION (BASEMENT 2)
- E BIN CENTER (BASEMENT 2)
- F M&E ROOM
- G WATER TANK

All plans are subject to changes / amendments as maybe required by the relevant authorities. Measurements are approximate only and subject to final survey. Information accurate at point of printing.

DISTRIBUTION CHART

290

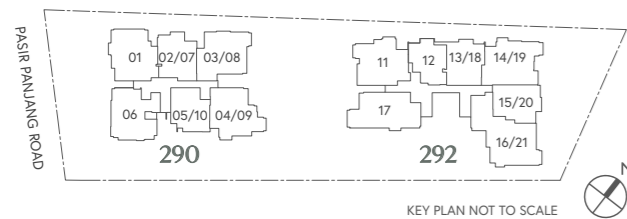
UNIT FLOOR	06	01	02/07	03/08	04/09	05/10
------------	----	----	-------	-------	-------	-------

				B4 PH 05-08	B3 PH 05-09	A1 PH 05-10
05 UPPER	B1 PH 05-06	B2 PH 05-01	A2 PH 05-07			
05			A2 05-02	B4 05-03	B3 05-04	A1 05-05
04	B1 04-06	B2 04-01	A2 04-02	B4 04-03	B3 04-04	A1 04-05
03	B1 03-06	B2 03-01	A2 03-02	B4 03-03	B3 03-04	A1 03-05
02	B1 02-06	B2 02-01	A2 02-02	B4 02-03	B3 02-04	A1 02-05
01	B1 01-06	B2 01-01	CAR PARK / ARRIVAL COURTYARD			
BASEMENT 1	CAR PARK					

292

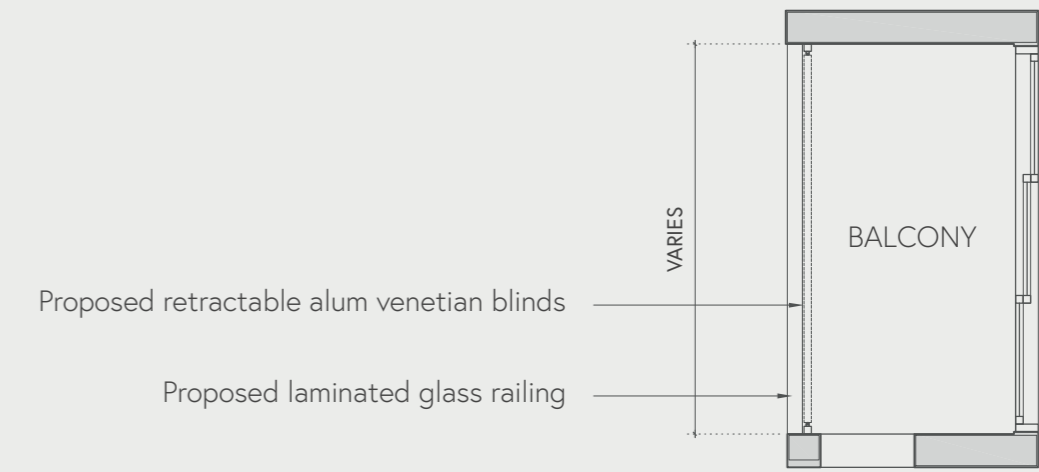
UNIT FLOOR	17	11	12	13/18	14/19	15/20	16/21
------------	----	----	----	-------	-------	-------	-------

ROOF	FACILITIES						C1 PH 05-21
05 UPPER	B5 PH 05-17	B6 PH 05-11		A4 PH 05-18	B7 PH 05-19	A5 PH 05-20	
05			A3 PH 05-12	A4 05-13	B7 05-14	A5 05-15	C1 05-16
04	B5 04-17	B6 04-11	A3 04-12	A4 04-13	B8 04-14	A5 04-15	C1 04-16
03	B5 03-17	B6 03-11	A3 03-12	A6 03-13	MGMT OFFICE 03-14	A5 03-15	C1 03-16
02	B5 02-17	B6 02-11	A3 02-12	LANDSCAPE DECK			
01	B5 01-17	B6 01-11	LANDSCAPE DECK				
BASEMENT 1	CAR PARK / ARRIVAL COURTYARD						
BASEMENT 2	CAR PARK						

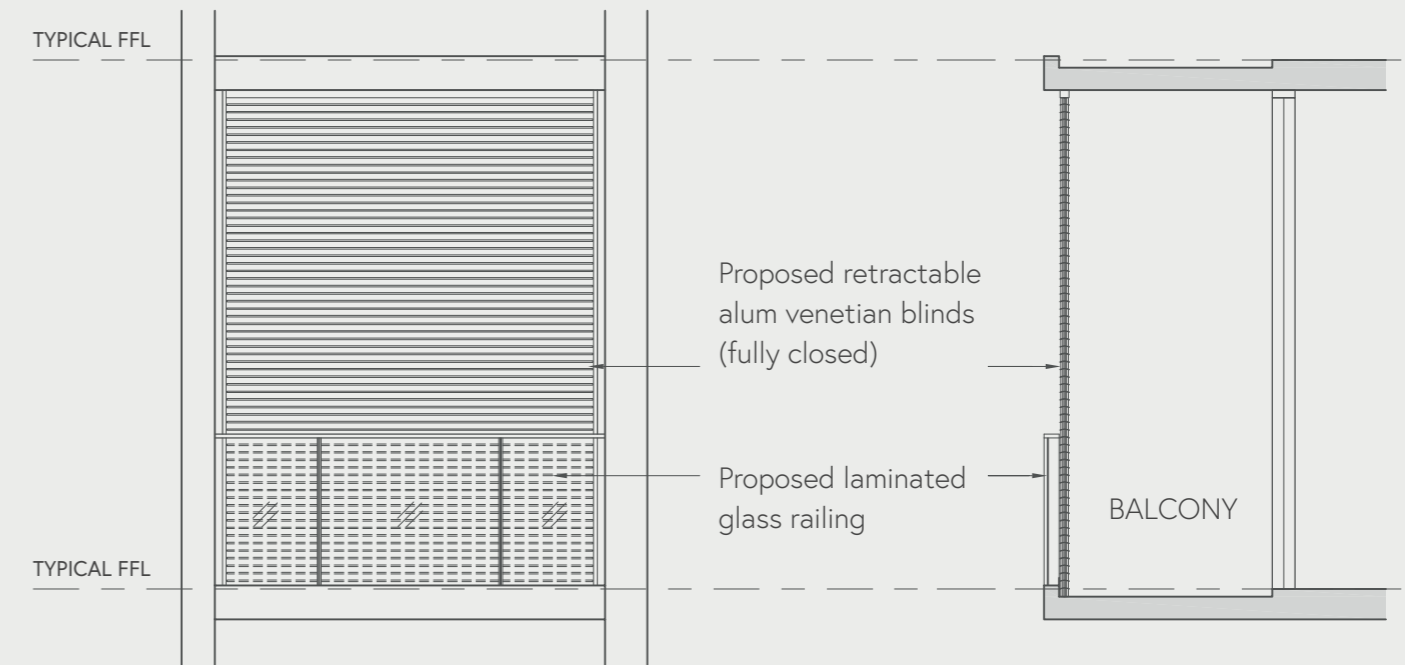


 2-BEDROOM	 2-BEDROOM PENTHOUSE
 2-BEDROOM PREMIUM	 2-BEDROOM PREMIUM PENTHOUSE
 3-BEDROOM	 3-BEDROOM PREMIUM PENTHOUSE
 3-BEDROOM PREMIUM	 4-BEDROOM PENTHOUSE
 4-BEDROOM	 4-BEDROOM PREMIUM PENTHOUSE

APPROVED TYPICAL BALCONY SCREEN DESIGN



TYPICAL BALCONY PART PLAN



FRONT ELEVATION

SECTION

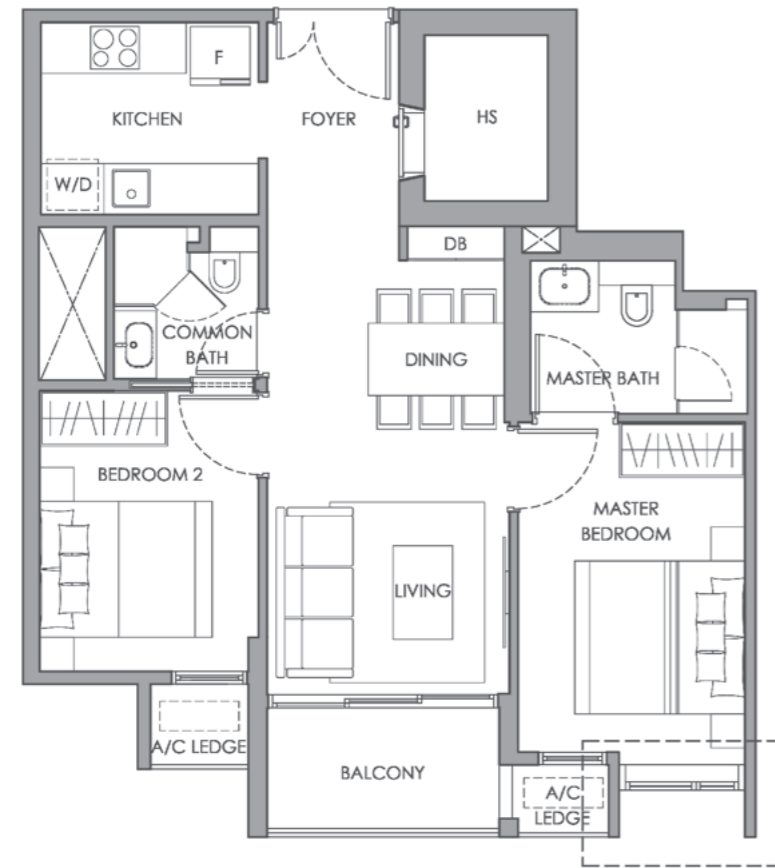
Notes

1. The balcony shall not be enclosed unless with the approved balcony screen.
2. The cost of installing the approved balcony screen is to be borne by the purchaser.
3. The balcony screen is not provided by the Developer (unless otherwise indicated on the floor plan).
4. The drawing is not drawn to scale and is solely for reference purposes only. Measurements shall be taken at the actual unit before the commencement of work. Approval from MCST is required before installation.
5. Fixing detail by the purchaser's contractor shall not damage the waterproofing of the existing structure.
6. The Purchaser shall refer to MCST for any additional details required.

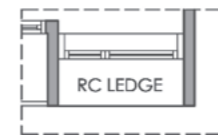
2-Bedroom

Type A1

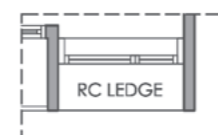
69 SQ M / 743 SQ FT
#02-05 TO #05-05



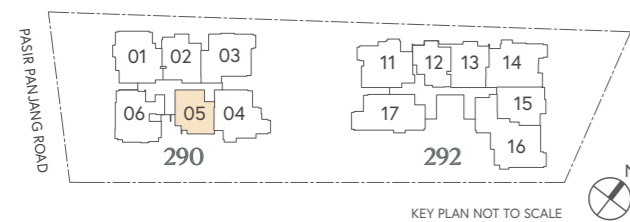
APPLICABLE TO #02-05



APPLICABLE TO #03-05 AND #05-05



APPLICABLE TO #04-05



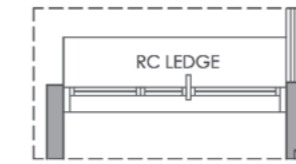
LEGEND		A/C LEDGE	- Air-Con Ledge
F	- Fridge Space	RC LEDGE	- Reinforced Concrete Ledge (Excluded from strata area)
W/D	- Washer Cum Dryer		
DB	- Distribution Board Box		
WC	- Water Closet		
HS	- Household Shelter		
			- Service Void Space (Excluded from strata area)

2-Bedroom Premium

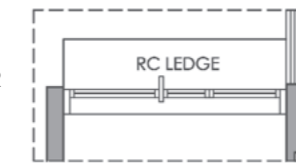
Type A2

77 SQ M / 829 SQ FT
#02-02 TO #05-02

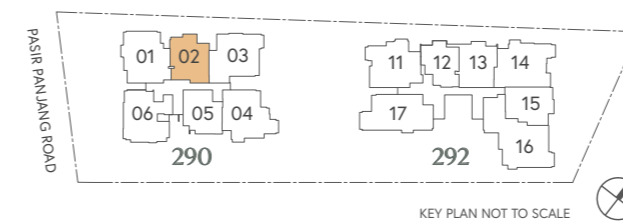
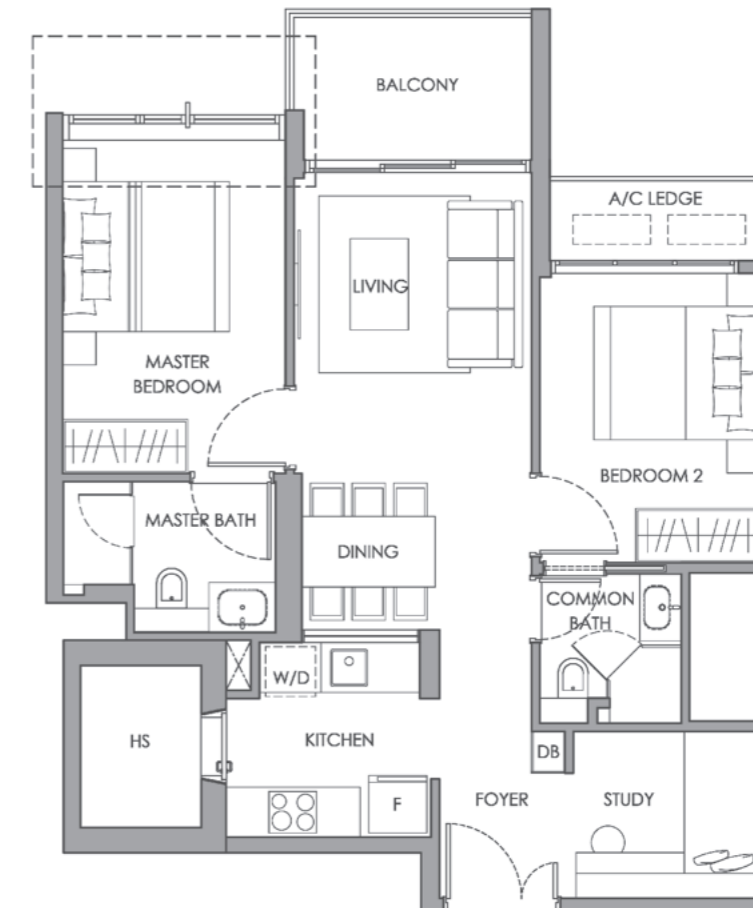
APPLICABLE TO #04-02



APPLICABLE TO #03-02 AND #05-02



APPLICABLE TO #02-02

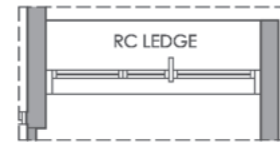


LEGEND		A/C LEDGE	- Air-Con Ledge
F	- Fridge Space	RC LEDGE	- Reinforced Concrete Ledge (Excluded from strata area)
W/D	- Washer Cum Dryer		
DB	- Distribution Board Box		
WC	- Water Closet		
HS	- Household Shelter		
			- Service Void Space (Excluded from strata area)

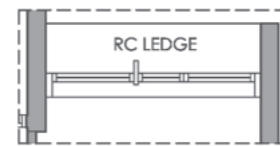
2-Bedroom

Type A3

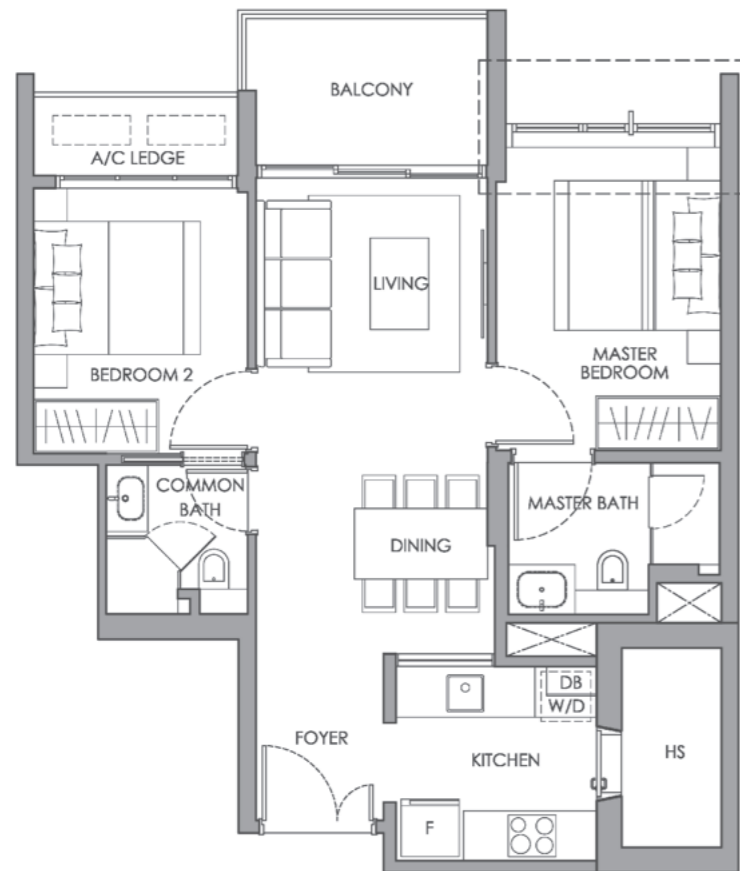
69 SQ M / 743 SQ FT
#02-12 TO #04-12



APPLICABLE TO #04-12



APPLICABLE TO #03-12



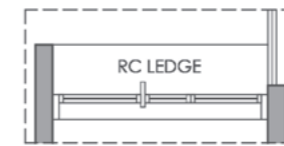
APPLICABLE TO #02-12

2-Bedroom Premium

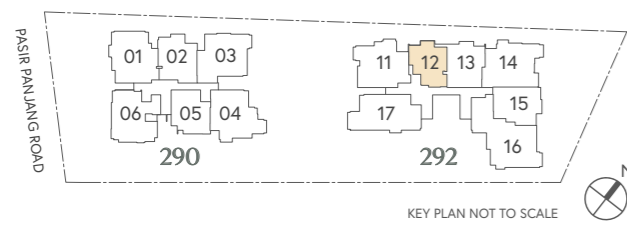
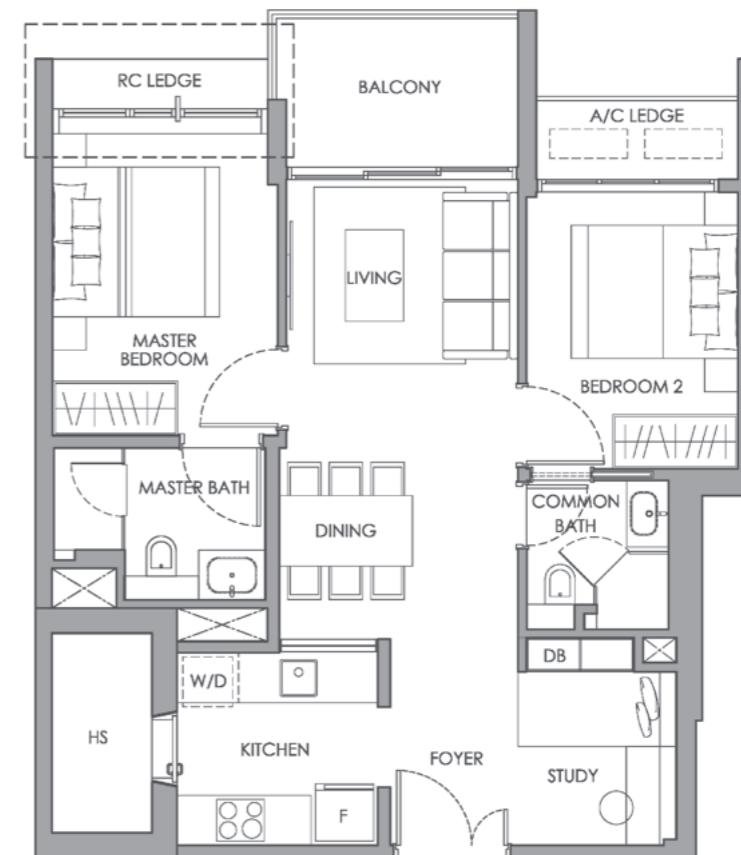
Type A4

75 SQ M / 807 SQ FT
#04-13 TO #05-13

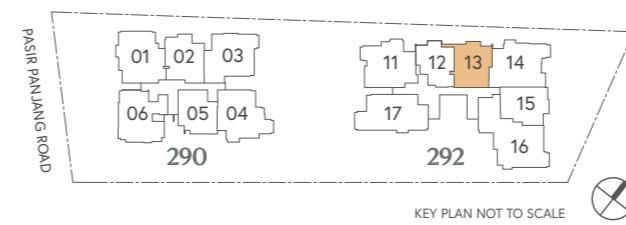
APPLICABLE TO #05-13



APPLICABLE TO #04-13



- | | | | |
|---------------|--------------------------|------------------|---|
| LEGEND | | A/C LEDGE | - Air-Con Ledge |
| F | - Fridge Space | RC LEDGE | - Reinforced Concrete Ledge (Excluded from strata area) |
| W/D | - Washer Cum Dryer | | |
| DB | - Distribution Board Box | | |
| WC | - Water Closet | | |
| HS | - Household Shelter | | - Service Void Space (Excluded from strata area) |



- | | | | |
|---------------|--------------------------|------------------|---|
| LEGEND | | A/C LEDGE | - Air-Con Ledge |
| F | - Fridge Space | RC LEDGE | - Reinforced Concrete Ledge (Excluded from strata area) |
| W/D | - Washer Cum Dryer | | |
| DB | - Distribution Board Box | | |
| WC | - Water Closet | | |
| HS | - Household Shelter | | - Service Void Space (Excluded from strata area) |

2-Bedroom Premium

Type A5

79 SQ M / 850 SQ FT

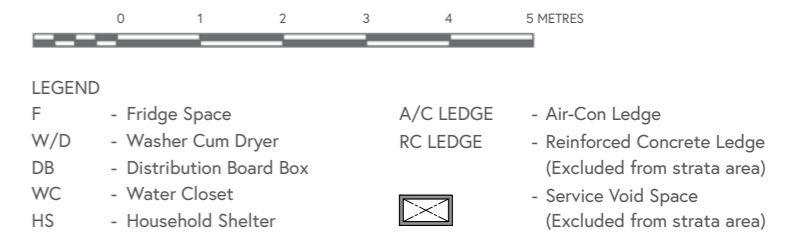
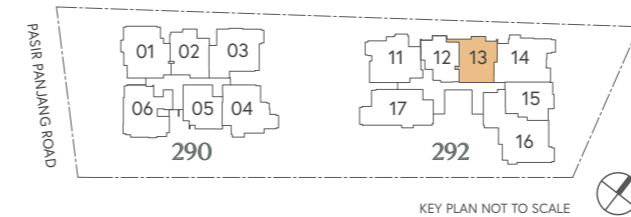
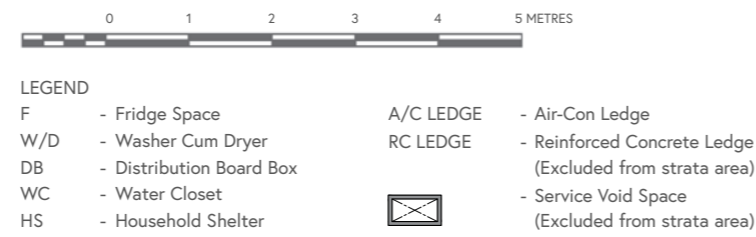
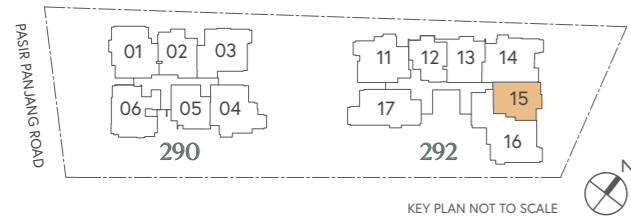
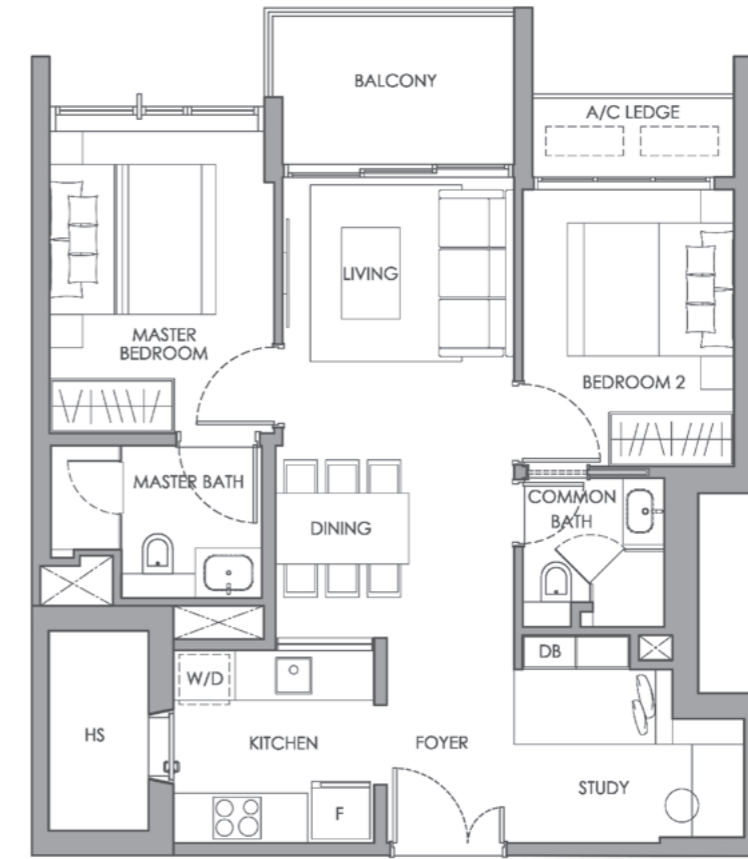
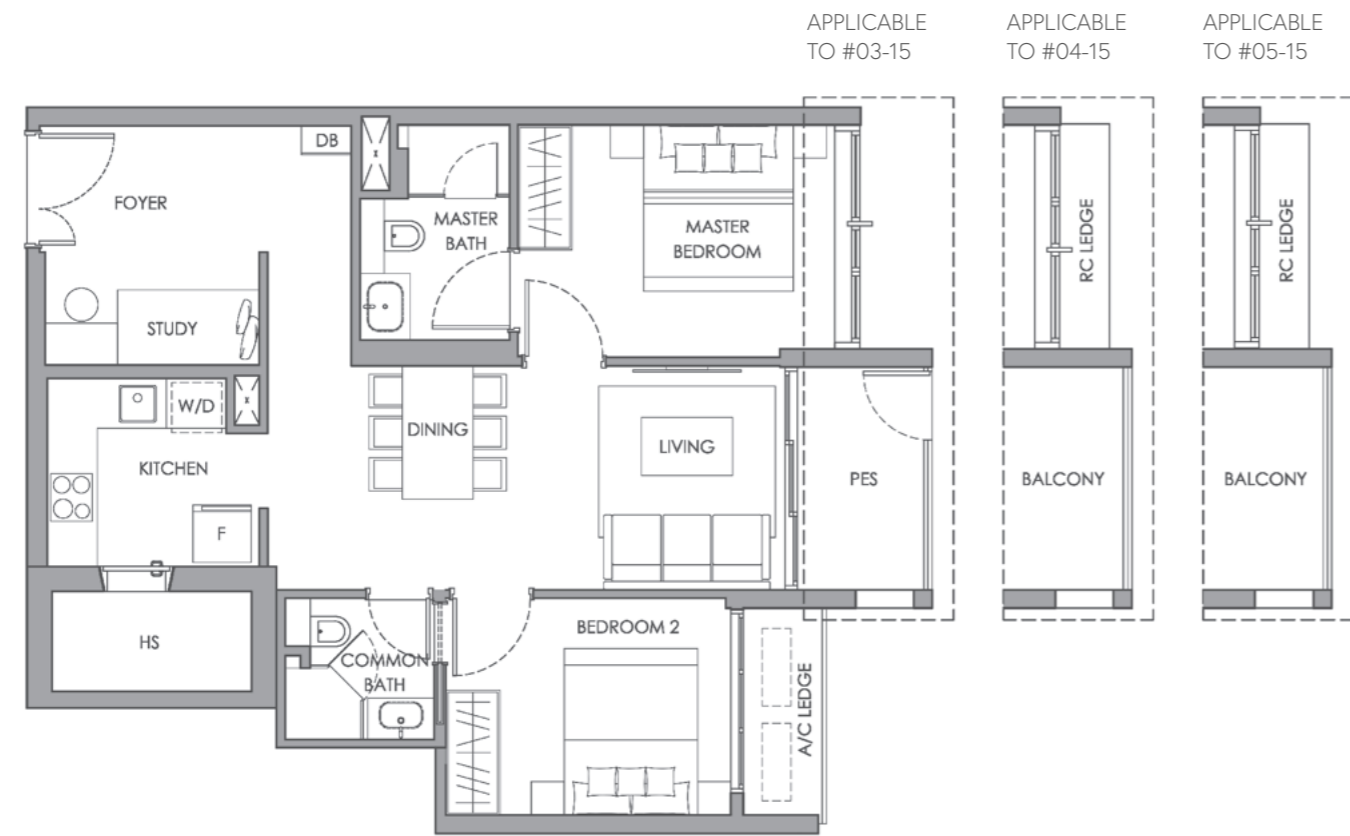
#03-15 TO #05-15

2-Bedroom Premium

Type A6

76 SQ M / 818 SQ FT

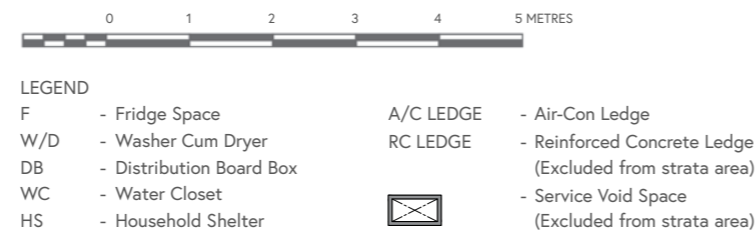
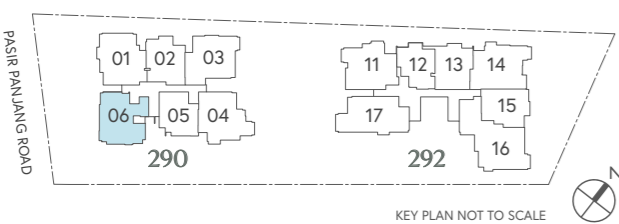
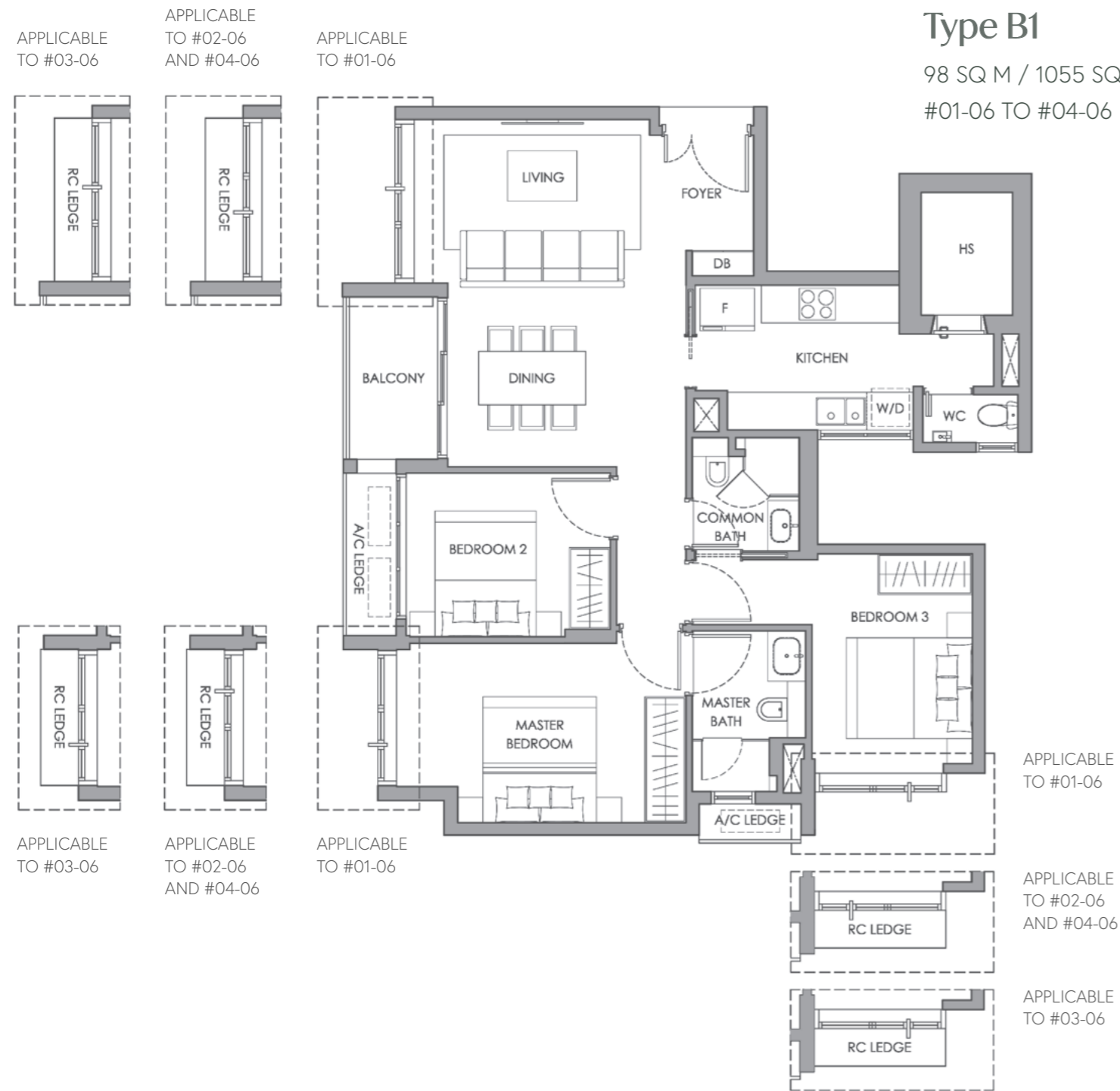
#03-13



3-Bedroom

Type B1

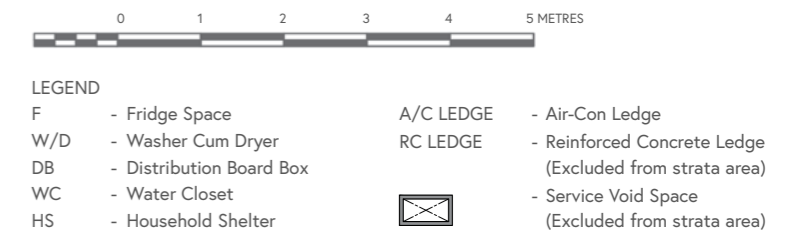
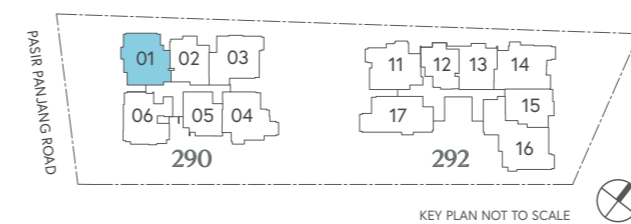
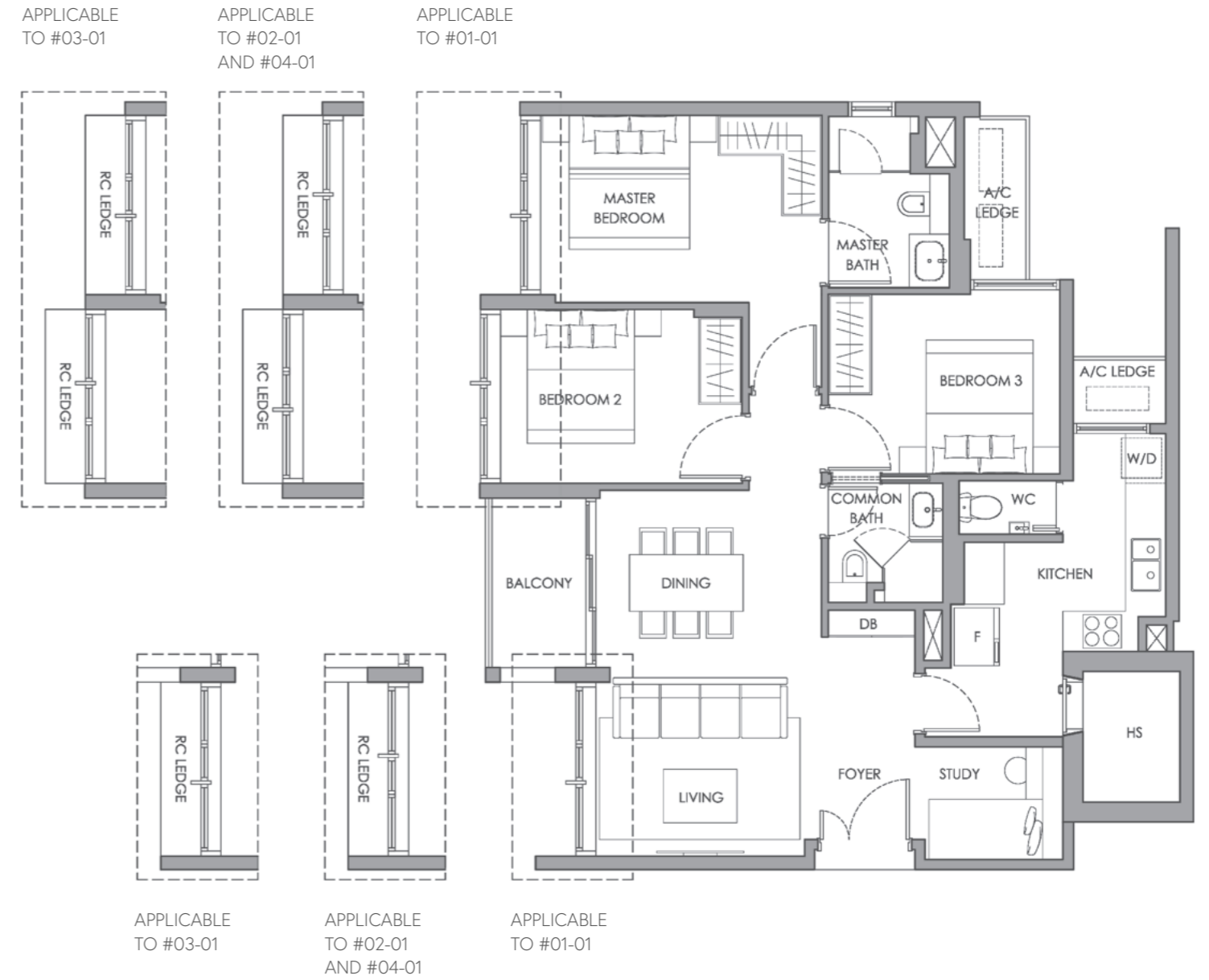
98 SQ M / 1055 SQ FT
#01-06 TO #04-06



3-Bedroom Premium

Type B2

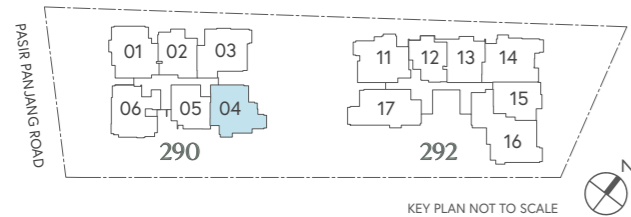
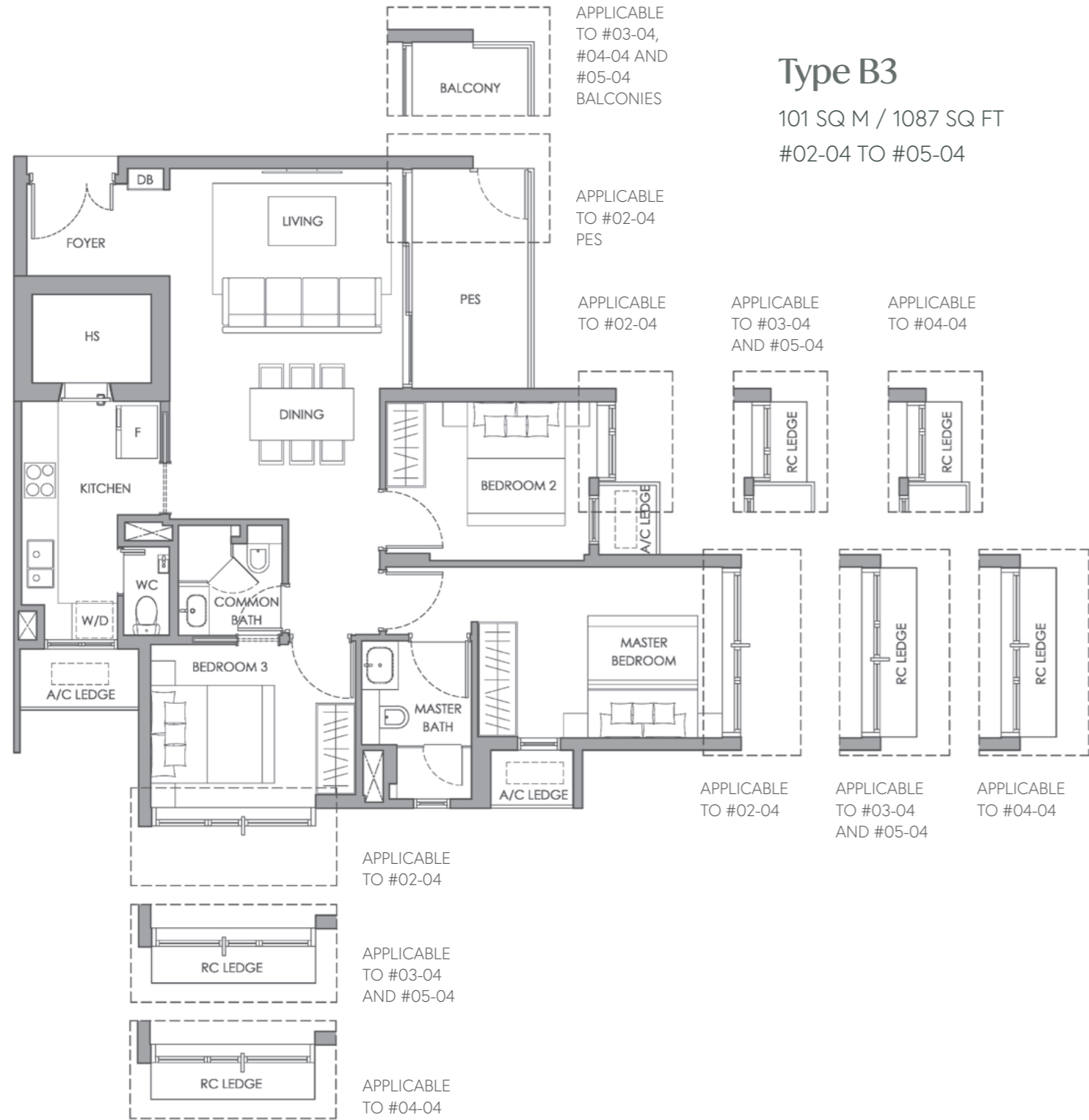
101 SQ M / 1087 SQ FT
#01-01 TO #04-01



3-Bedroom

Type B3

101 SQ M / 1087 SQ FT
#02-04 TO #05-04

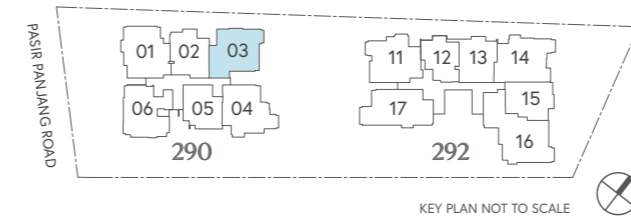
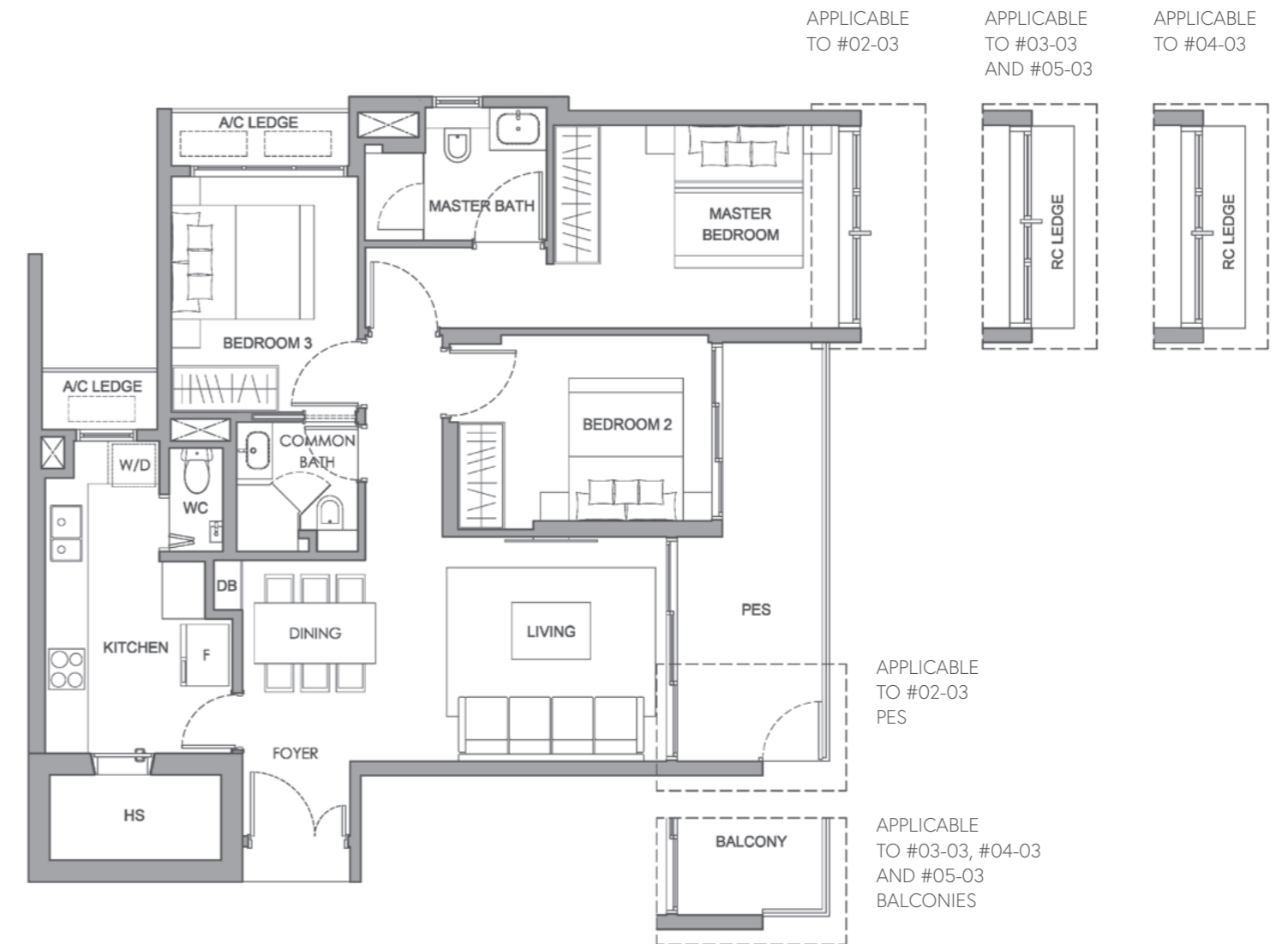


- LEGEND**
- F - Fridge Space
 - W/D - Washer Cum Dryer
 - DB - Distribution Board Box
 - WC - Water Closet
 - HS - Household Shelter
 - A/C LEDGE - Air-Con Ledge
 - RC LEDGE - Reinforced Concrete Ledge (Excluded from strata area)
 - Service Void Space (Excluded from strata area)

3-Bedroom

Type B4

103 SQ M / 1109 SQ FT
#02-03 TO #05-03

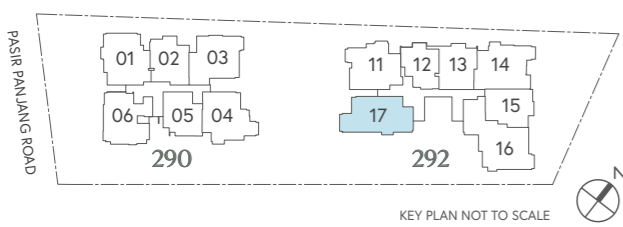
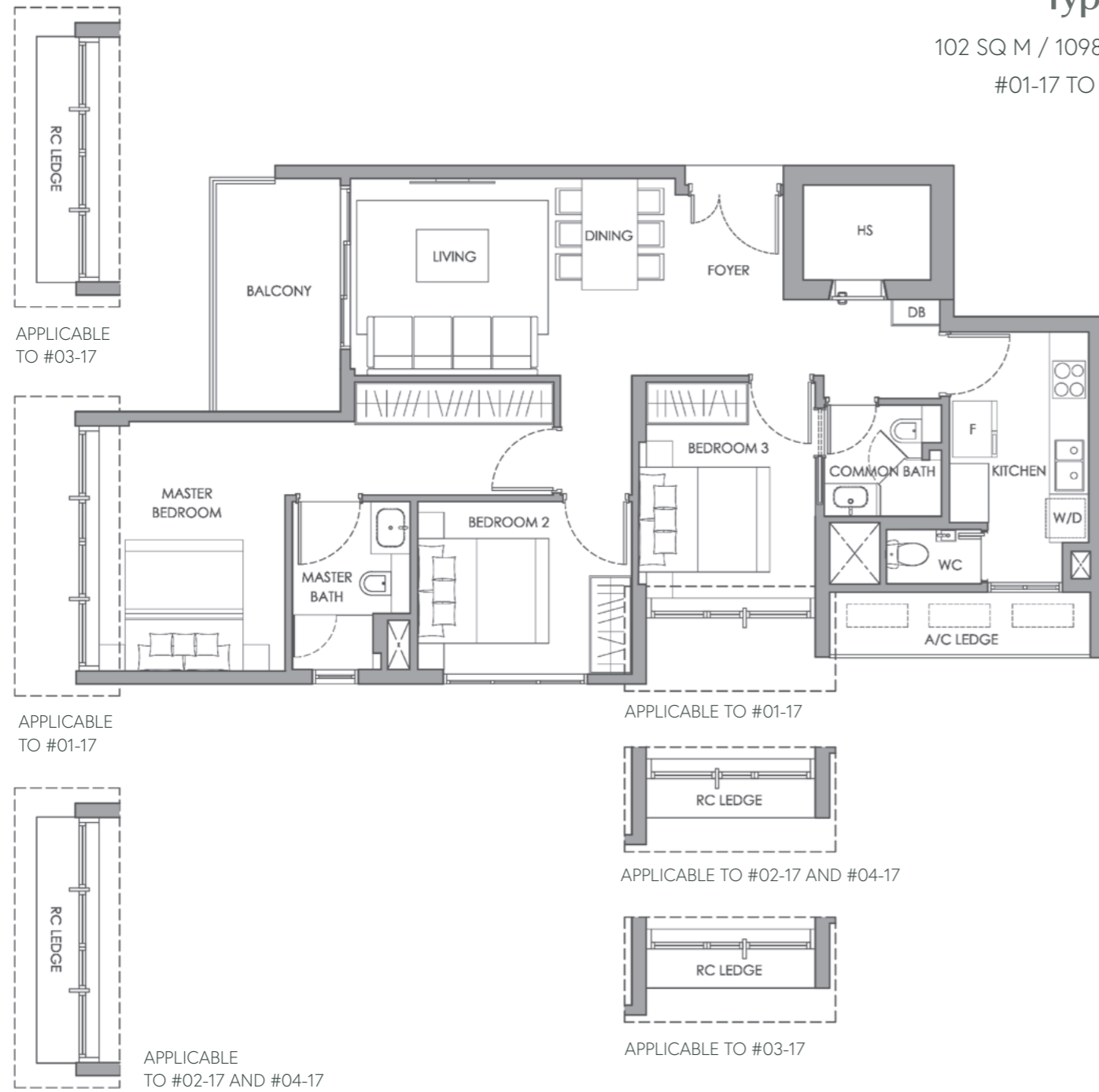


- LEGEND**
- F - Fridge Space
 - W/D - Washer Cum Dryer
 - DB - Distribution Board Box
 - WC - Water Closet
 - HS - Household Shelter
 - A/C LEDGE - Air-Con Ledge
 - RC LEDGE - Reinforced Concrete Ledge (Excluded from strata area)
 - Service Void Space (Excluded from strata area)

3-Bedroom

Type B5

102 SQ M / 1098 SQ FT
#01-17 TO #04-17

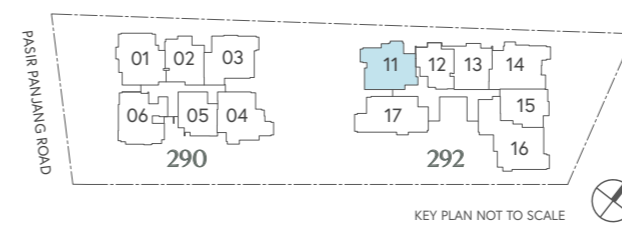
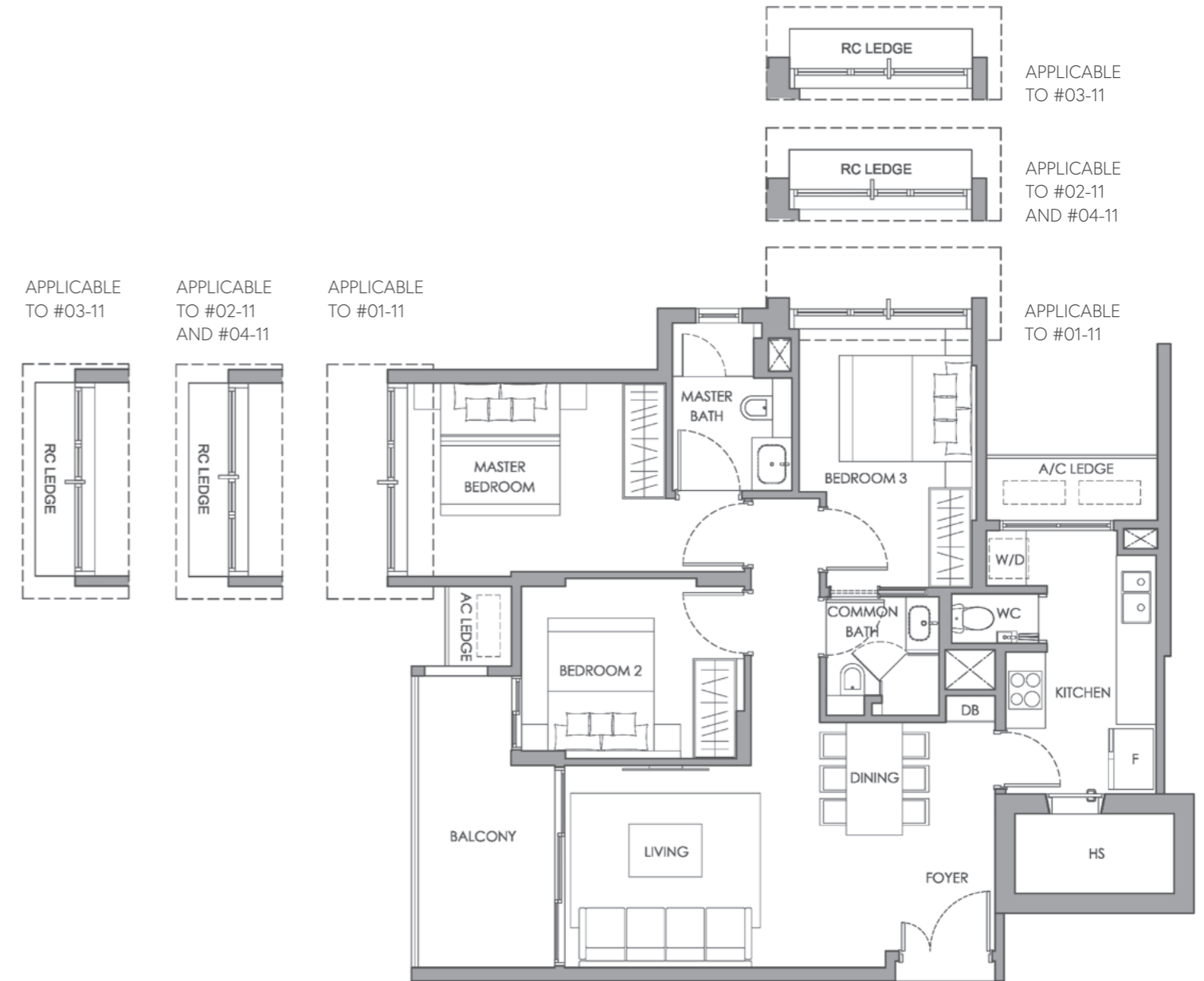


- LEGEND**
- F - Fridge Space
 - W/D - Washer Cum Dryer
 - DB - Distribution Board Box
 - WC - Water Closet
 - HS - Household Shelter
 - A/C LEDGE - Air-Con Ledge
 - RC LEDGE - Reinforced Concrete Ledge (Excluded from strata area)
 - Service Void Space (Excluded from strata area)

3-Bedroom

Type B6

101 SQ M / 1087 SQ FT
#01-11 TO #04-11



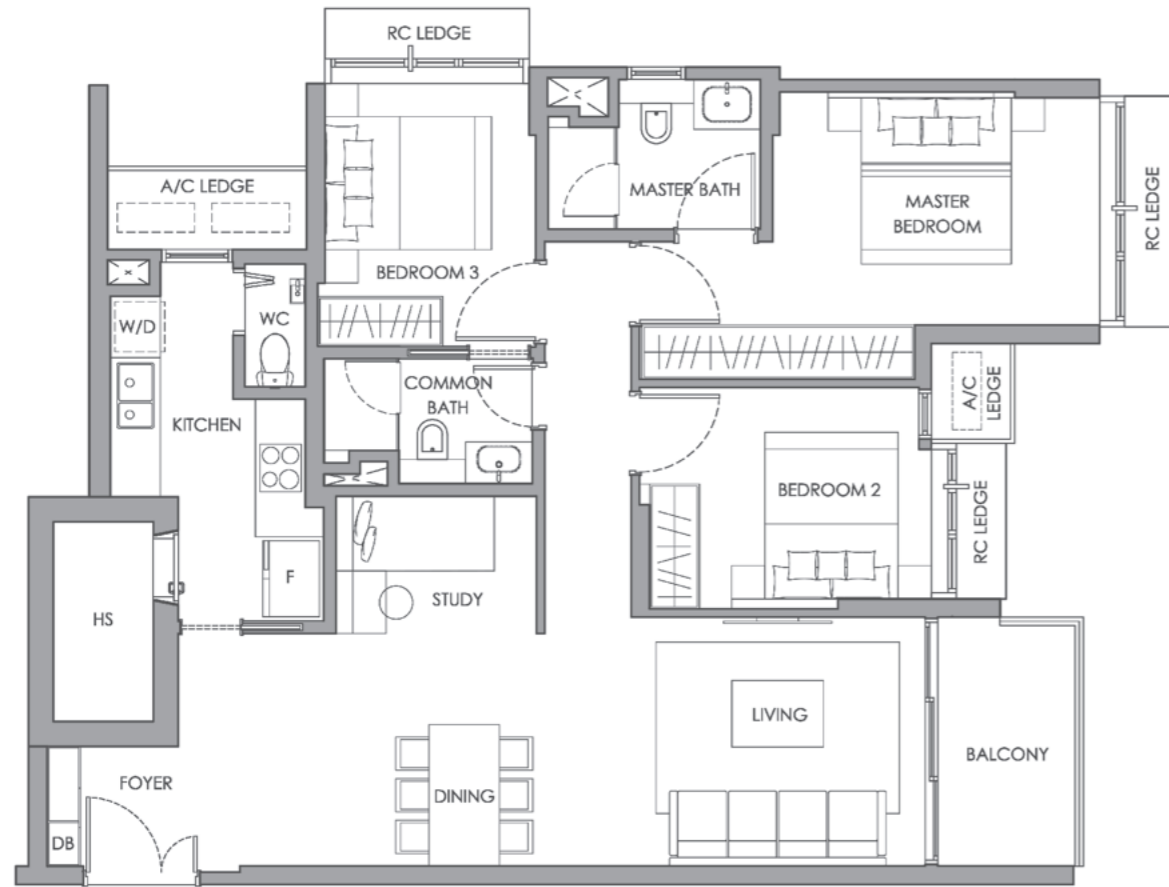
- LEGEND**
- F - Fridge Space
 - W/D - Washer Cum Dryer
 - DB - Distribution Board Box
 - WC - Water Closet
 - HS - Household Shelter
 - A/C LEDGE - Air-Con Ledge
 - RC LEDGE - Reinforced Concrete Ledge (Excluded from strata area)
 - Service Void Space (Excluded from strata area)

3-Bedroom Premium

Type B7

110 SQ M / 1184 SQ FT

#05-14

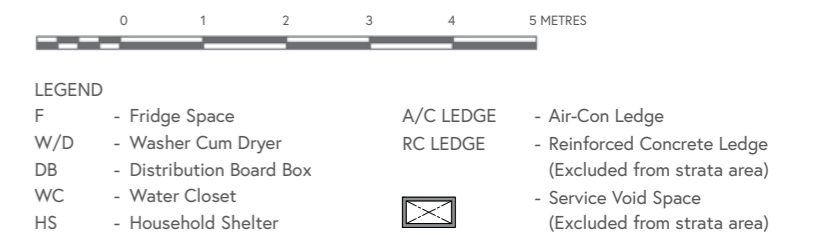
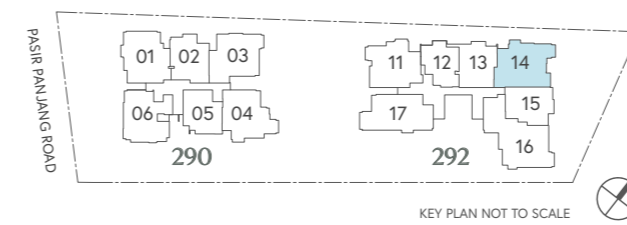
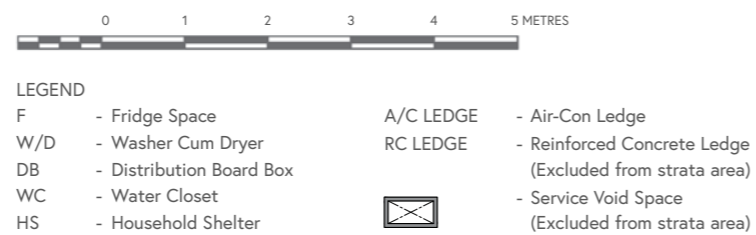
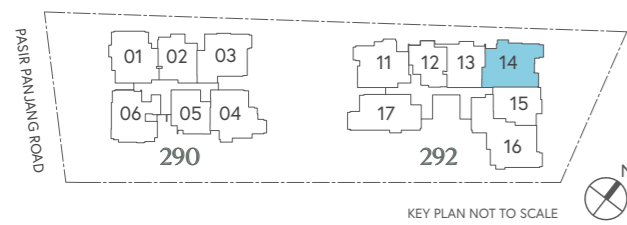
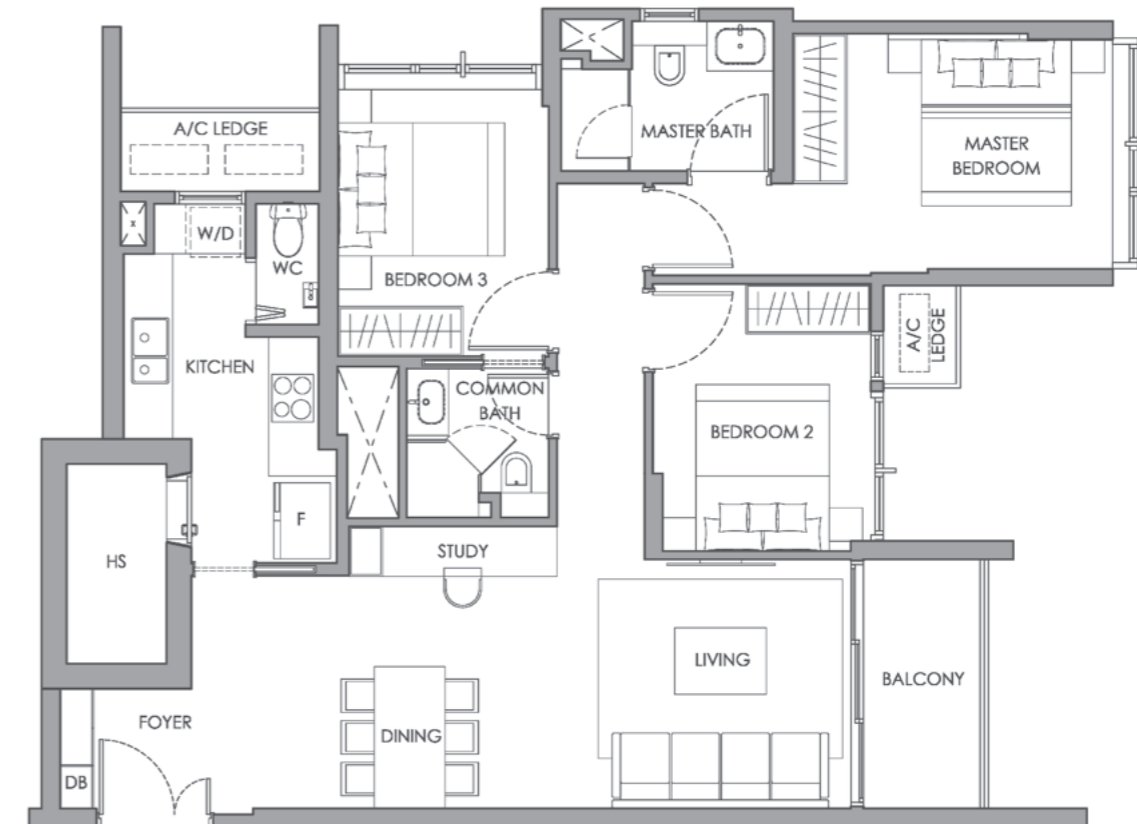


3-Bedroom

Type B8

100 SQ M / 1076 SQ FT

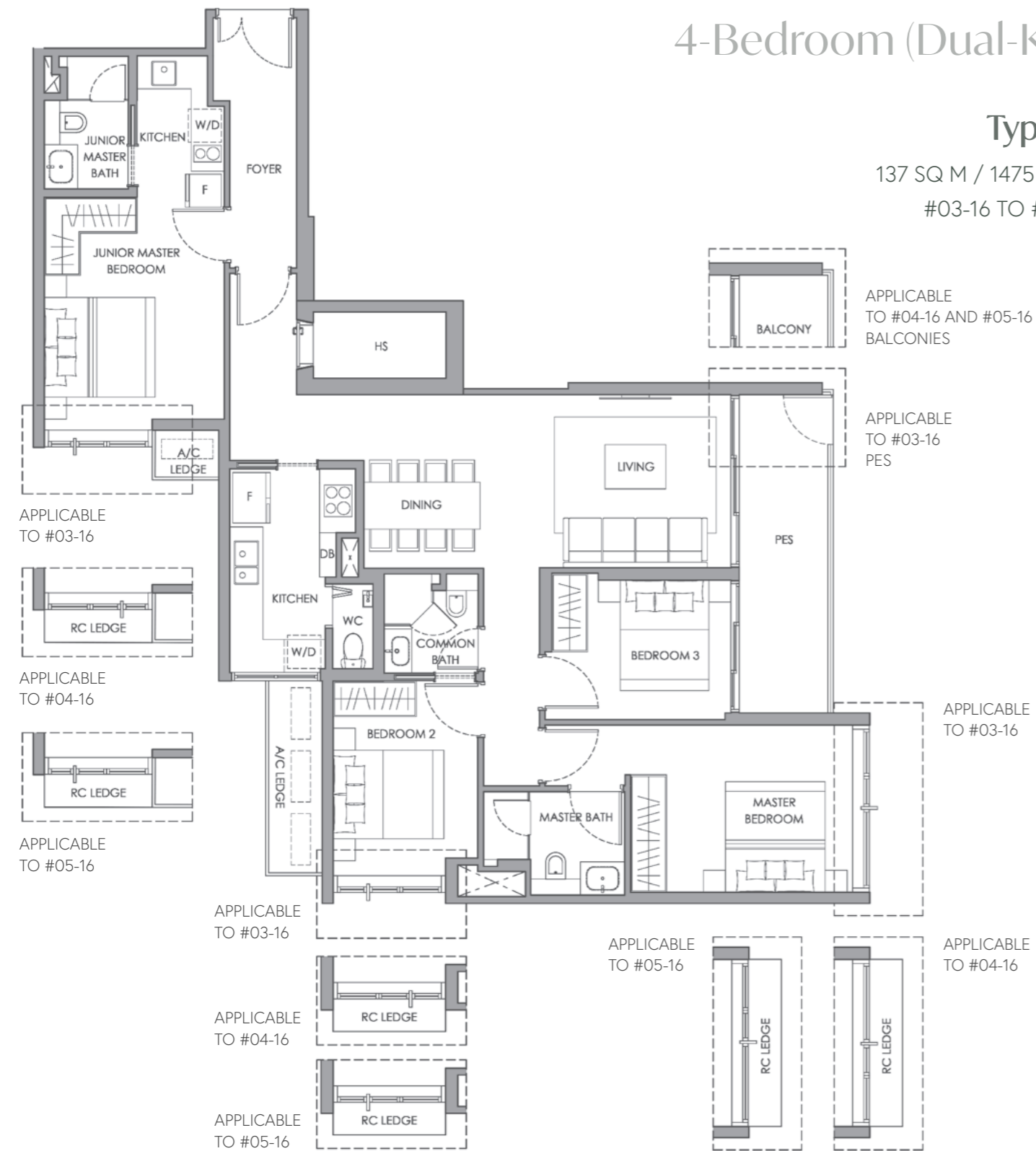
#04-14



4-Bedroom (Dual-Key)

Type C1

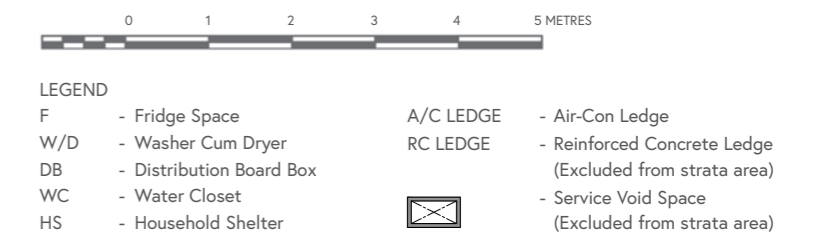
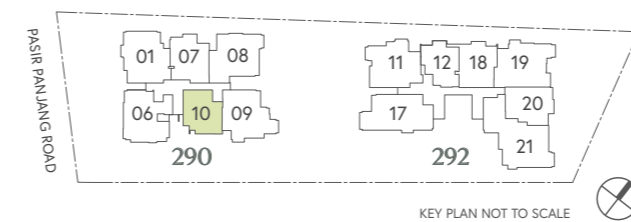
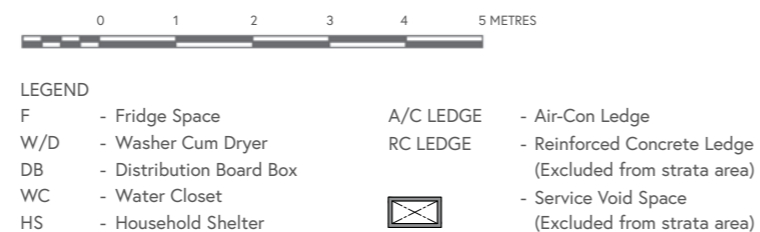
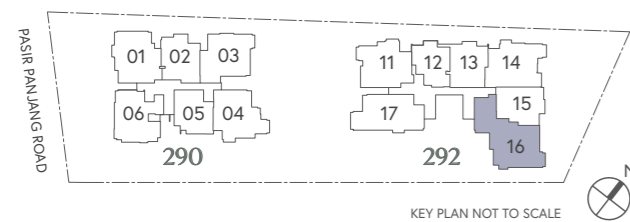
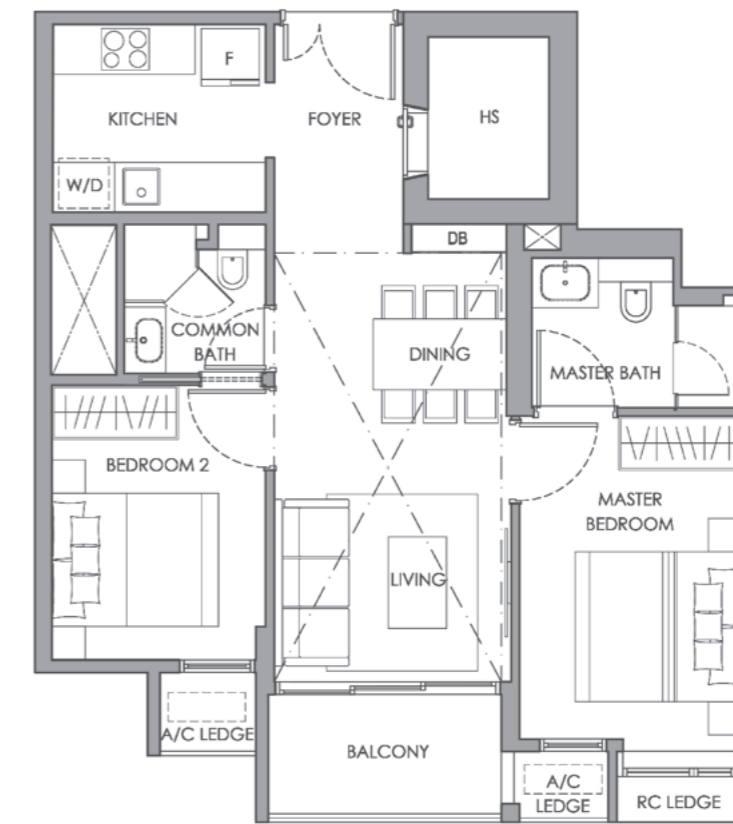
137 SQ M / 1475 SQ FT
#03-16 TO #05-16



2-Bedroom Penthouse

Type A1 PH

85 SQ M / 915 SQ FT
#05-10

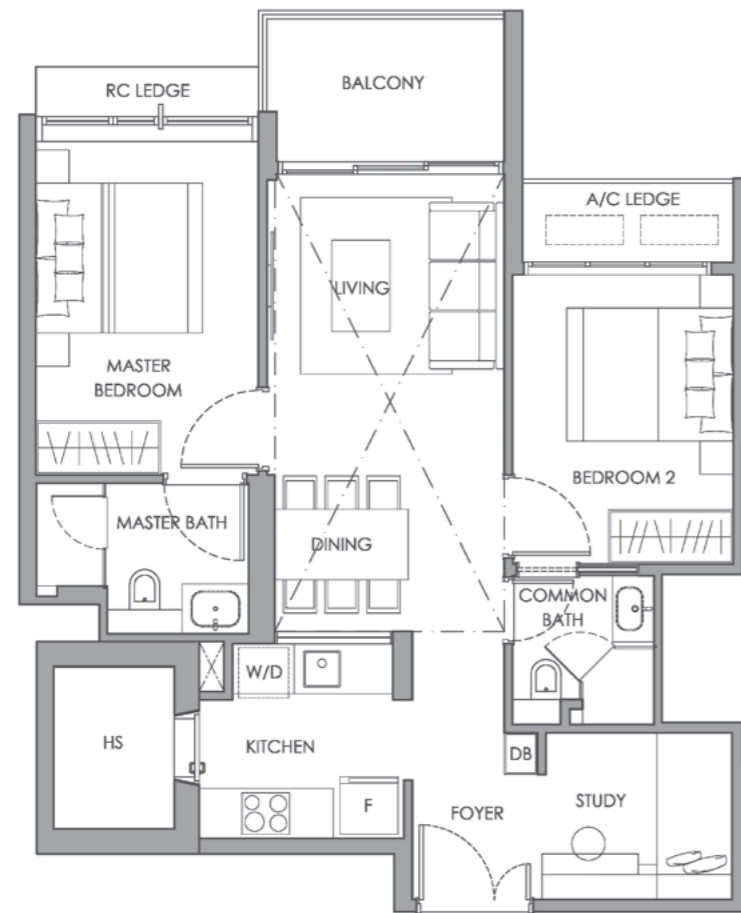


2-Bedroom Premium Penthouse

Type A2 PH

94 SQ M / 1012 SQ FT

#05-07

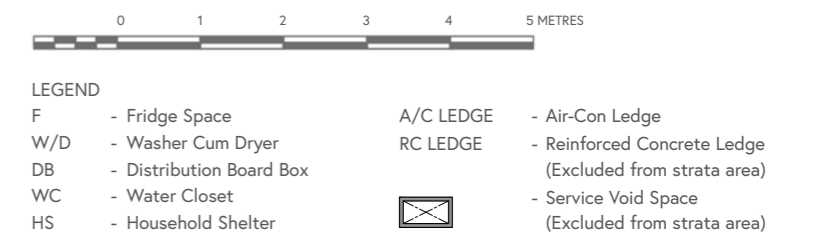
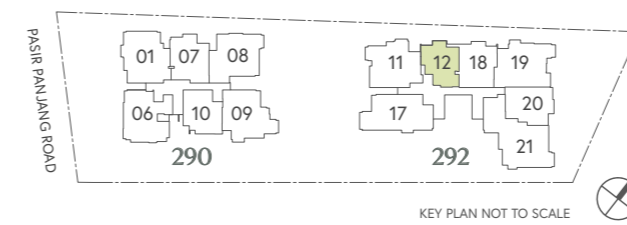
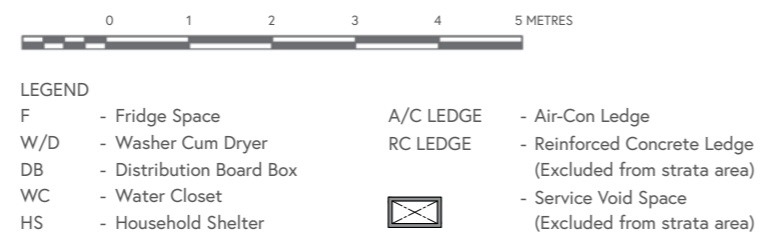
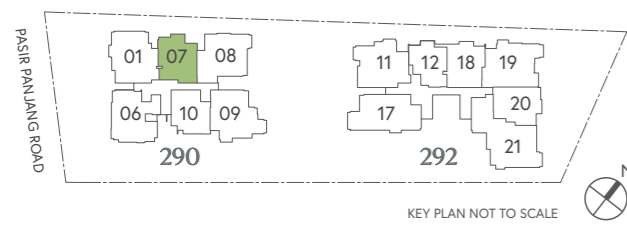
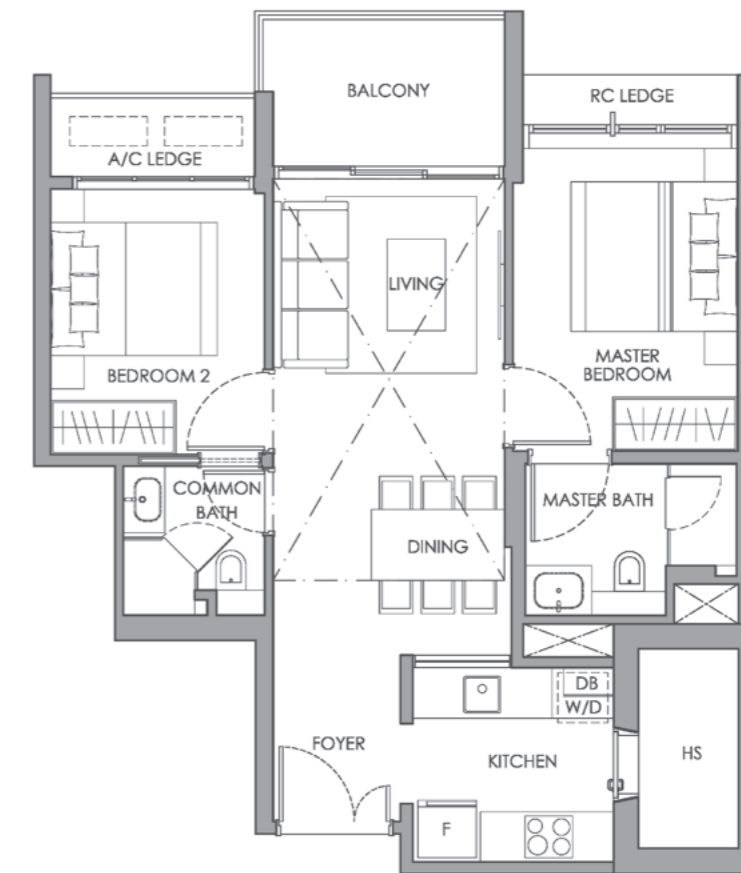


2-Bedroom Penthouse

Type A3 PH

84 SQ M / 904 SQ FT

#05-12

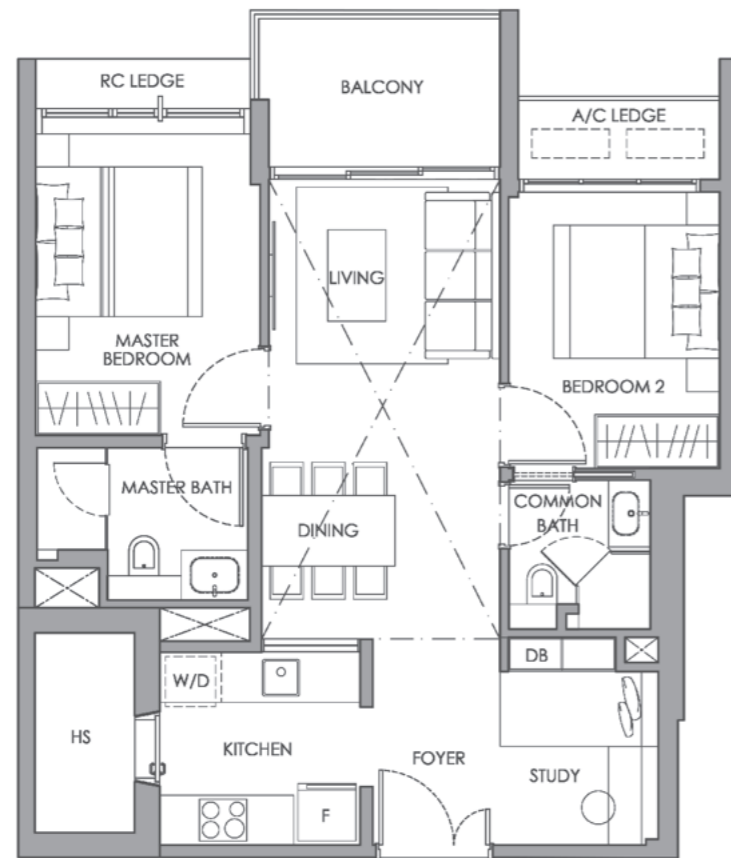


2-Bedroom Premium Penthouse

Type A4 PH

92 SQ M / 990 SQ FT

#05-18

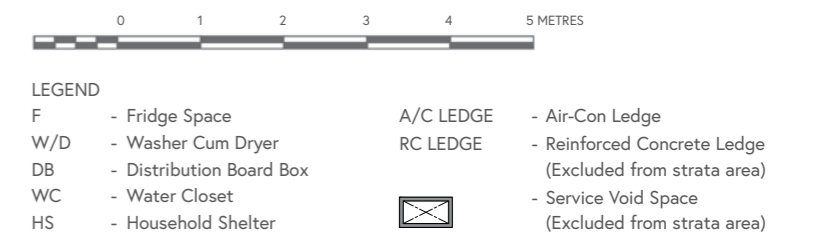
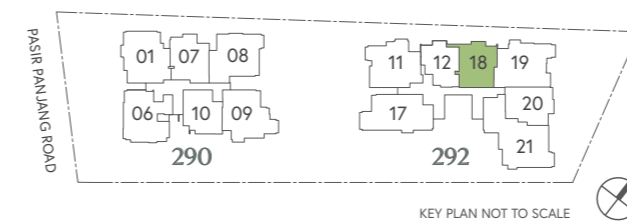
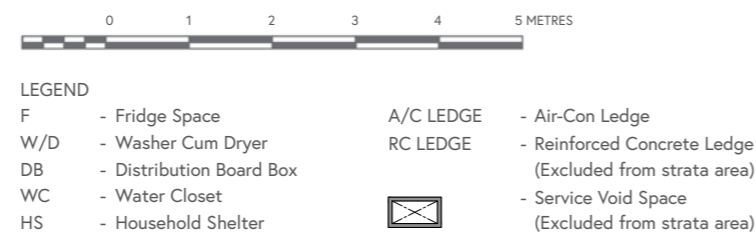
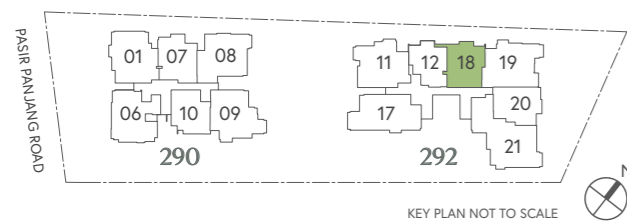
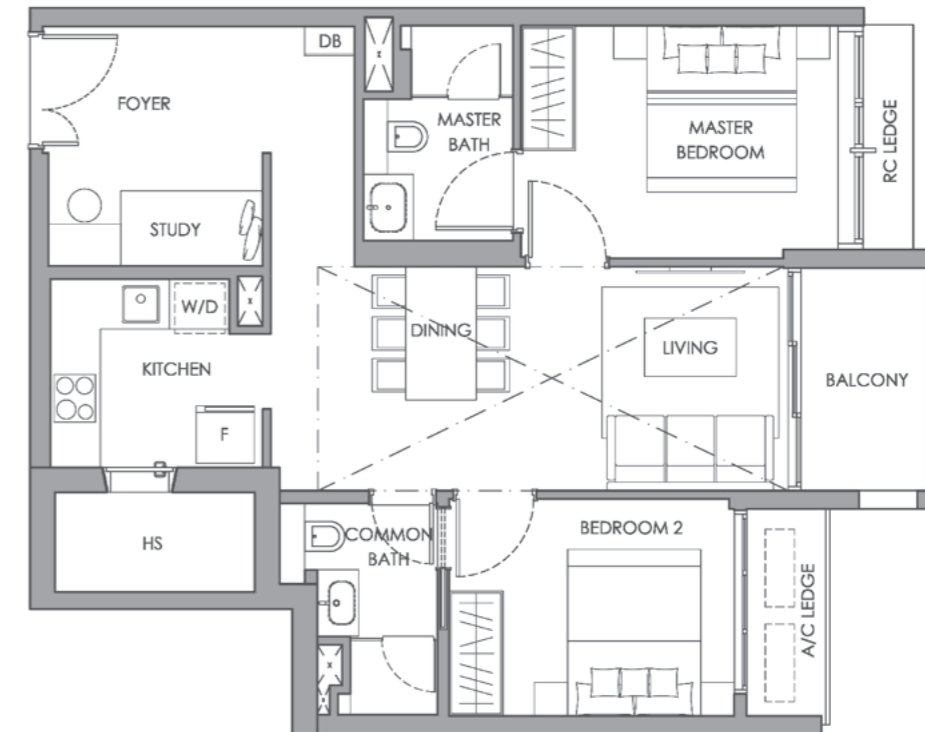


2-Bedroom Premium Penthouse

Type A5 PH

96 SQ M / 1033 SQ FT

#05-20

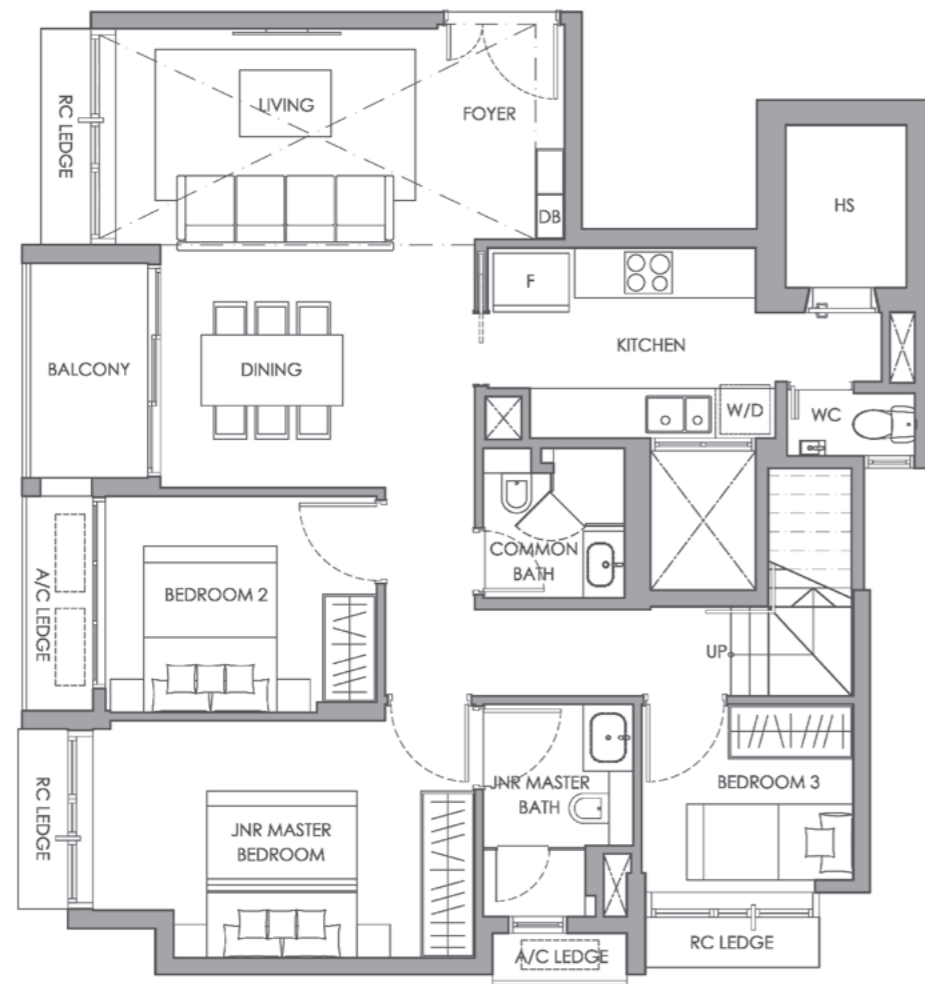


4-Bedroom Penthouse

Type B1 PH

158 SQ M / 1701 SQ FT

#05-06



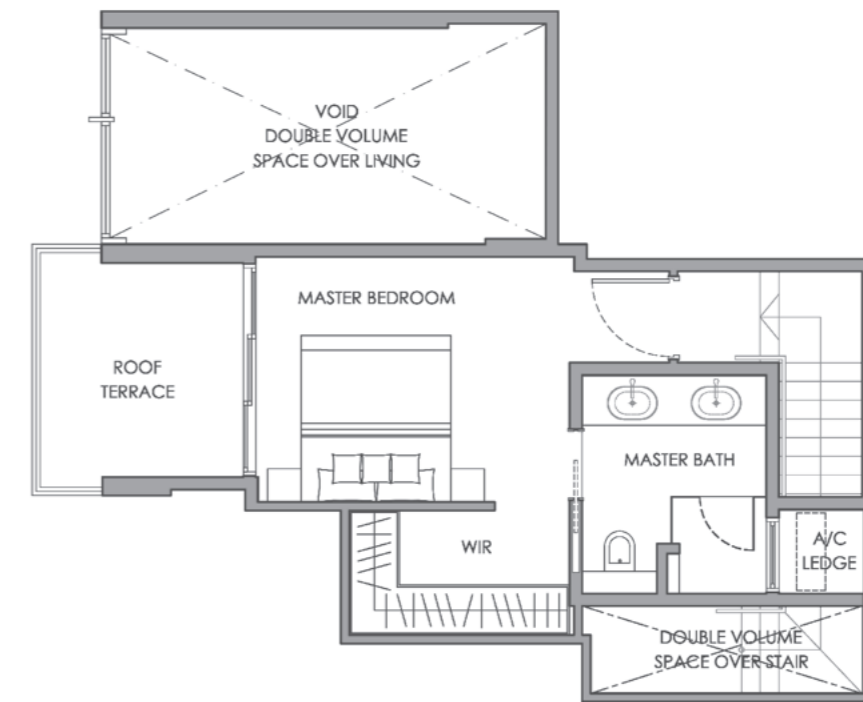
LOWER PLAN

4-Bedroom Penthouse

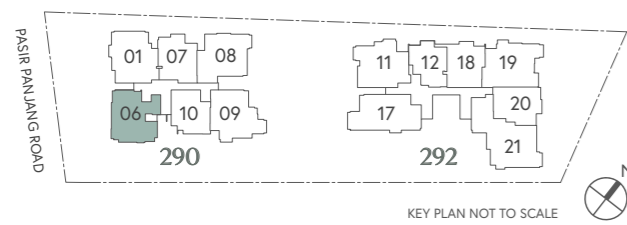
Type B1 PH

158 SQ M / 1701 SQ FT

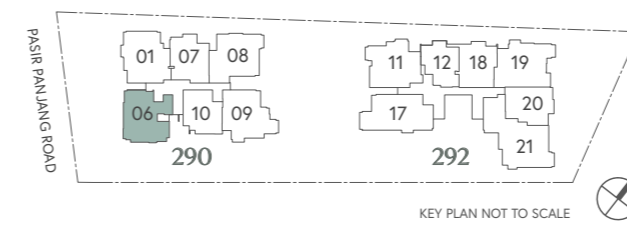
#05-06



UPPER PLAN



- LEGEND
- F - Fridge Space
 - W/D - Washer Cum Dryer
 - DB - Distribution Board Box
 - WC - Water Closet
 - HS - Household Shelter
 - A/C LEDGE - Air-Con Ledge
 - RC LEDGE - Reinforced Concrete Ledge (Excluded from strata area)
 - Service Void Space (Excluded from strata area)



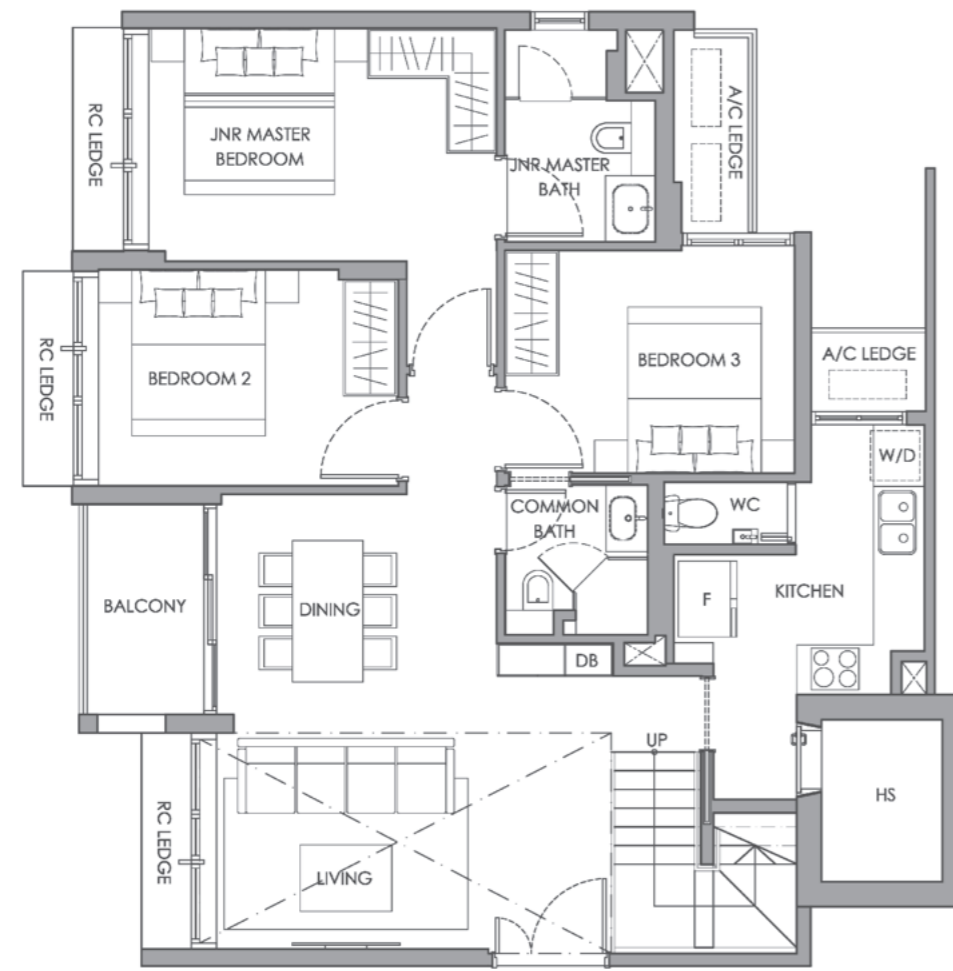
- LEGEND
- F - Fridge Space
 - W/D - Washer Cum Dryer
 - DB - Distribution Board Box
 - WC - Water Closet
 - HS - Household Shelter
 - A/C LEDGE - Air-Con Ledge
 - RC LEDGE - Reinforced Concrete Ledge (Excluded from strata area)
 - Service Void Space (Excluded from strata area)

4-Bedroom Penthouse

Type B2 PH

155 SQ M / 1668 SQ FT

#05-01



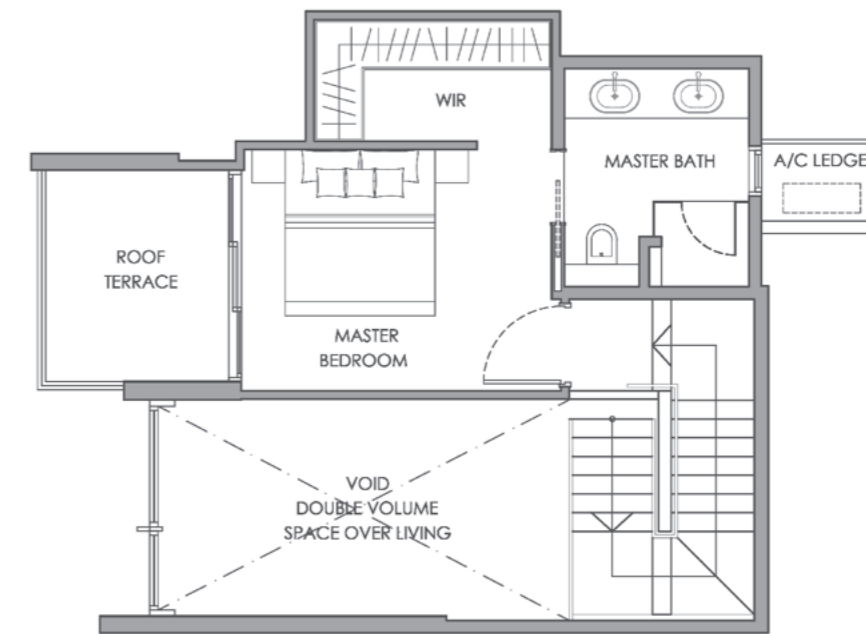
LOWER PLAN

4-Bedroom Penthouse

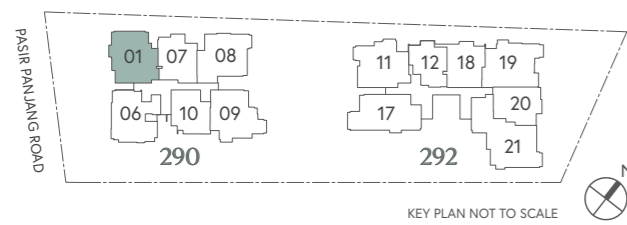
Type B2 PH

155 SQ M / 1668 SQ FT

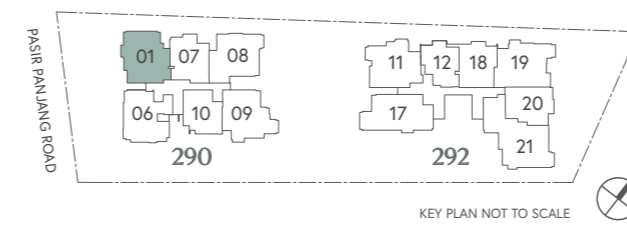
#05-01



UPPER PLAN



- LEGEND
- F - Fridge Space
 - W/D - Washer Cum Dryer
 - DB - Distribution Board Box
 - WC - Water Closet
 - HS - Household Shelter
 - A/C LEDGE - Air-Con Ledge
 - RC LEDGE - Reinforced Concrete Ledge (Excluded from strata area)
 - Service Void Space (Excluded from strata area)



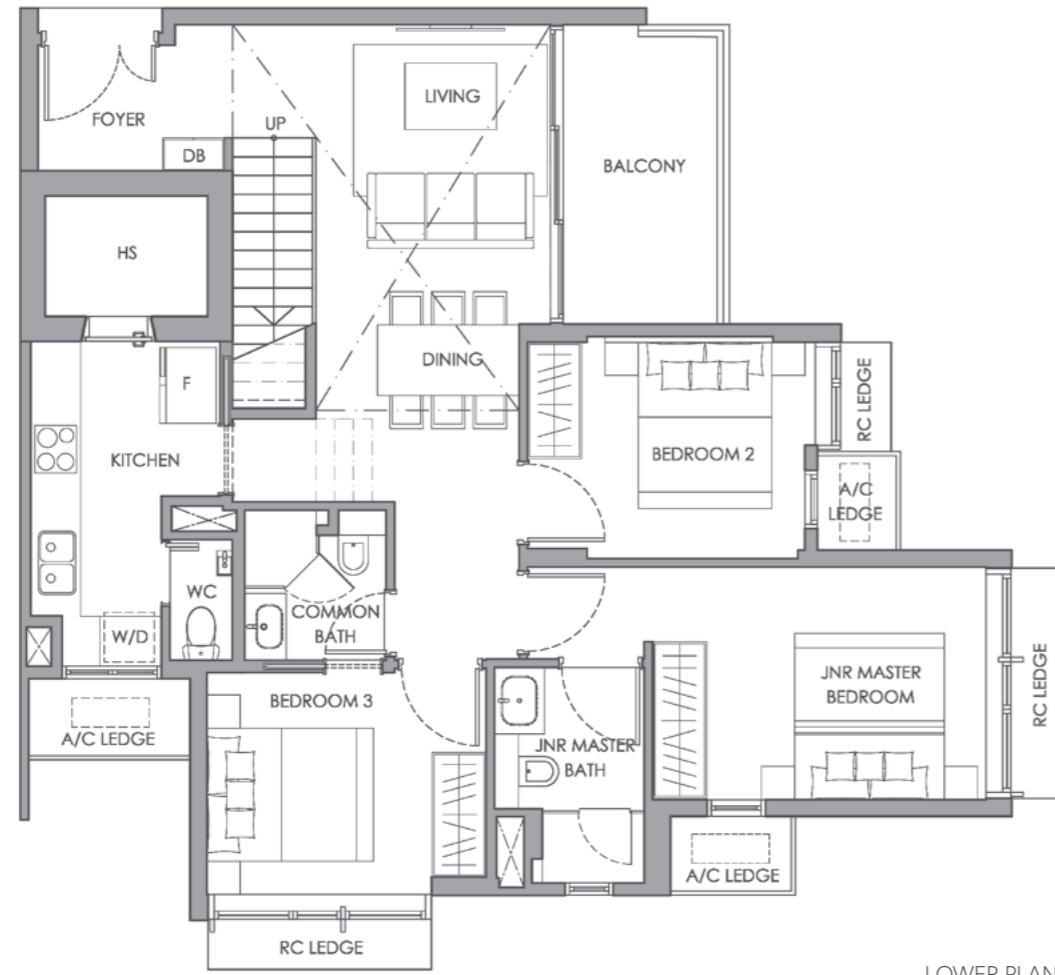
- LEGEND
- F - Fridge Space
 - W/D - Washer Cum Dryer
 - DB - Distribution Board Box
 - WC - Water Closet
 - HS - Household Shelter
 - A/C LEDGE - Air-Con Ledge
 - RC LEDGE - Reinforced Concrete Ledge (Excluded from strata area)
 - Service Void Space (Excluded from strata area)

4-Bedroom Penthouse

Type B3 PH

154 SQ M / 1658 SQ FT

#05-09



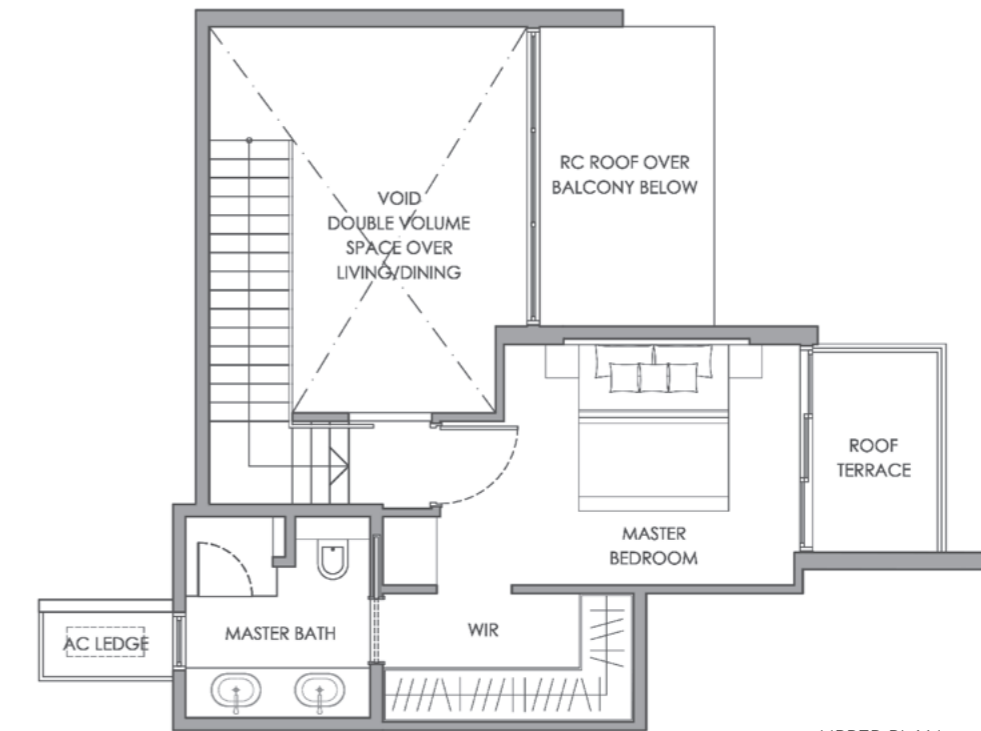
LOWER PLAN

4-Bedroom Penthouse

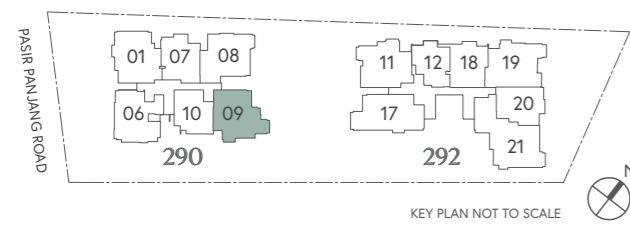
Type B3 PH

154 SQ M / 1658 SQ FT

#05-09



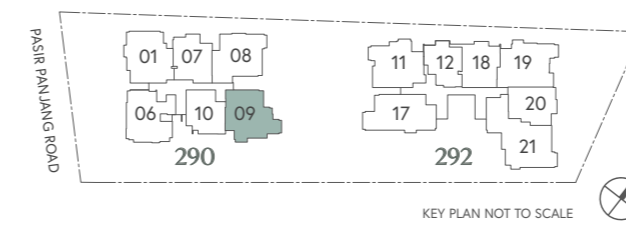
UPPER PLAN



KEY PLAN NOT TO SCALE



- | | | |
|---------------|--------------------------|-----------------------------|
| LEGEND | | |
| F | - Fridge Space | A/C LEDGE |
| W/D | - Washer Cum Dryer | RC LEDGE |
| DB | - Distribution Board Box | - Air-Con Ledge |
| WC | - Water Closet | - Reinforced Concrete Ledge |
| HS | - Household Shelter | (Excluded from strata area) |
| | | - Service Void Space |
| | | (Excluded from strata area) |



KEY PLAN NOT TO SCALE



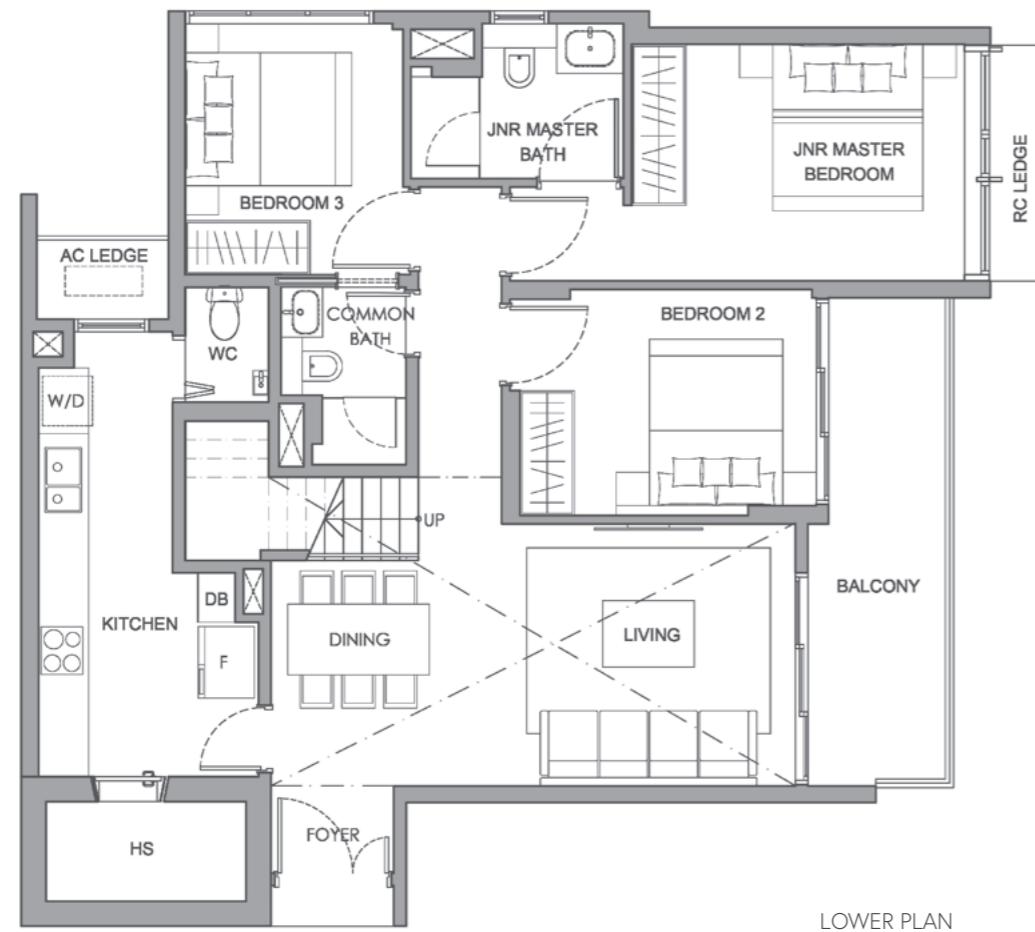
- | | | |
|---------------|--------------------------|-----------------------------|
| LEGEND | | |
| F | - Fridge Space | A/C LEDGE |
| W/D | - Washer Cum Dryer | RC LEDGE |
| DB | - Distribution Board Box | - Air-Con Ledge |
| WC | - Water Closet | - Reinforced Concrete Ledge |
| HS | - Household Shelter | (Excluded from strata area) |
| | | - Service Void Space |
| | | (Excluded from strata area) |

4-Bedroom Penthouse

Type B4 PH

165 SQ M / 1776 SQ FT

#05-08



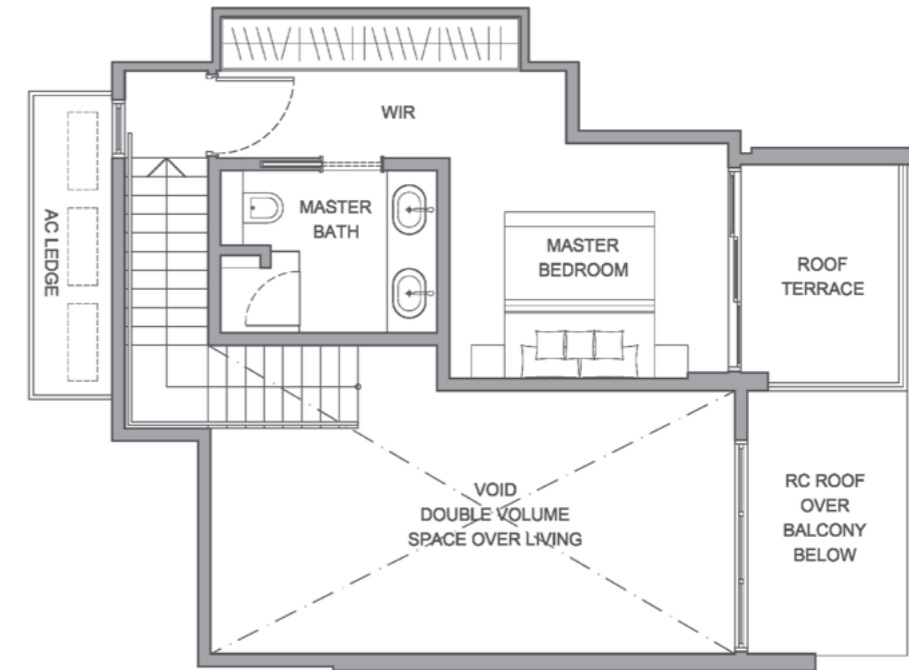
LOWER PLAN

4-Bedroom Penthouse

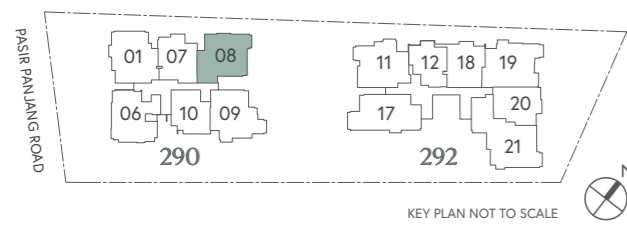
Type B4 PH

165 SQ M / 1776 SQ FT

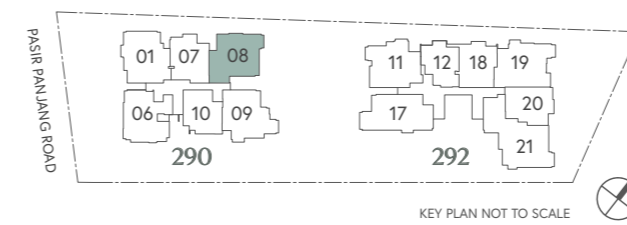
#05-08



UPPER PLAN



- LEGEND
- F - Fridge Space
 - W/D - Washer Cum Dryer
 - DB - Distribution Board Box
 - WC - Water Closet
 - HS - Household Shelter
 - A/C LEDGE - Air-Con Ledge
 - RC LEDGE - Reinforced Concrete Ledge (Excluded from strata area)
 - Service Void Space (Excluded from strata area)



- LEGEND
- F - Fridge Space
 - W/D - Washer Cum Dryer
 - DB - Distribution Board Box
 - WC - Water Closet
 - HS - Household Shelter
 - A/C LEDGE - Air-Con Ledge
 - RC LEDGE - Reinforced Concrete Ledge (Excluded from strata area)
 - Service Void Space (Excluded from strata area)

4-Bedroom Penthouse

Type B5 PH

159 SQ M / 1711 SQ FT

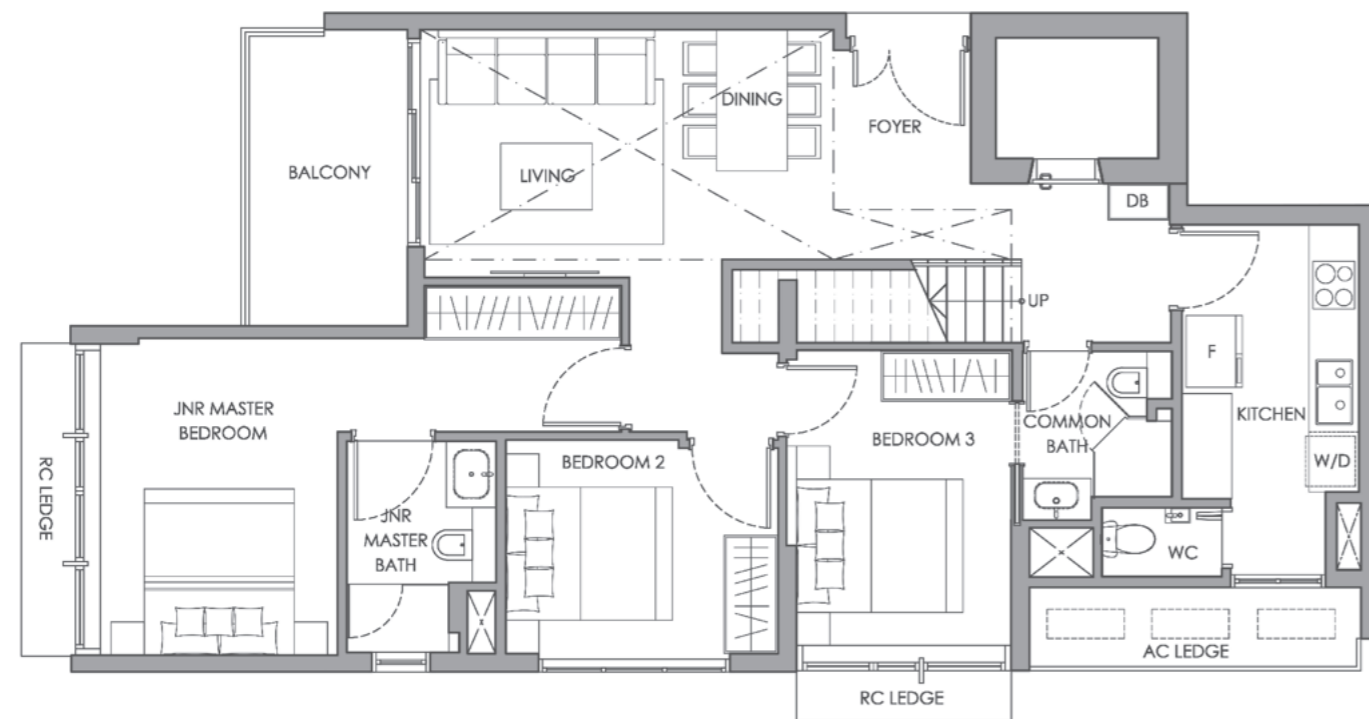
#05-17

4-Bedroom Penthouse

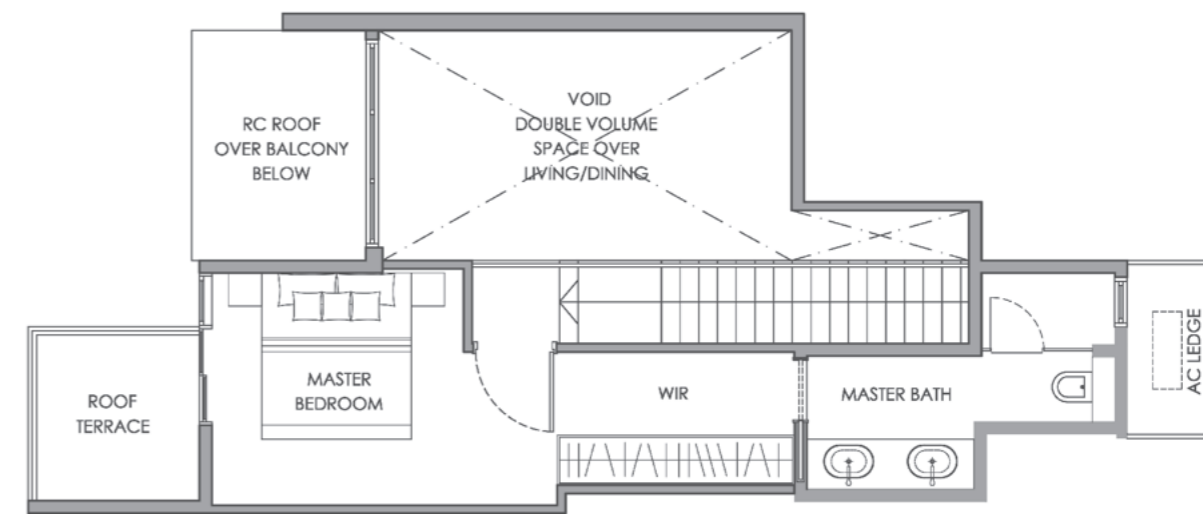
Type B5 PH

159 SQ M / 1711 SQ FT

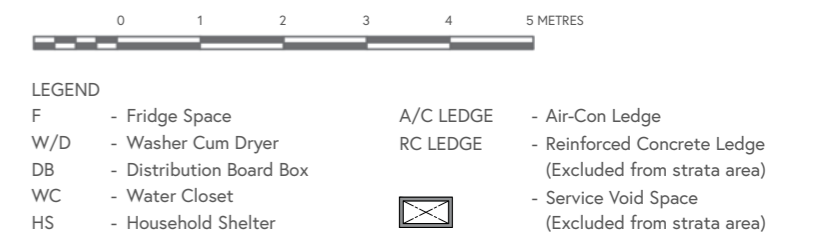
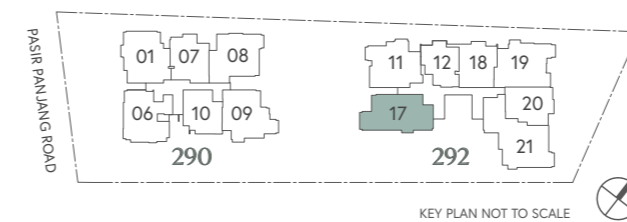
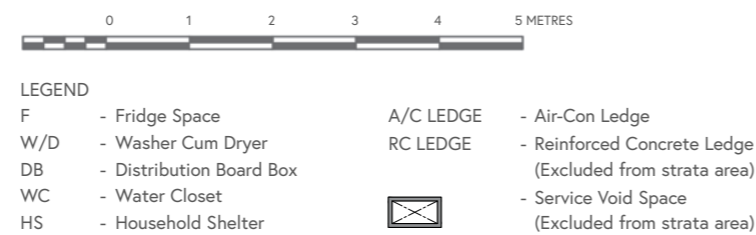
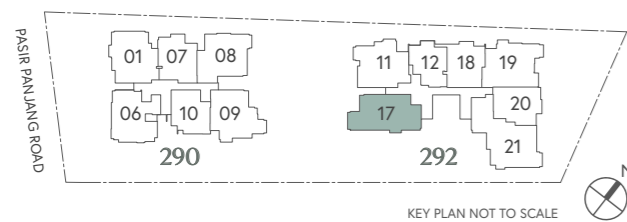
#05-17



LOWER PLAN



UPPER PLAN

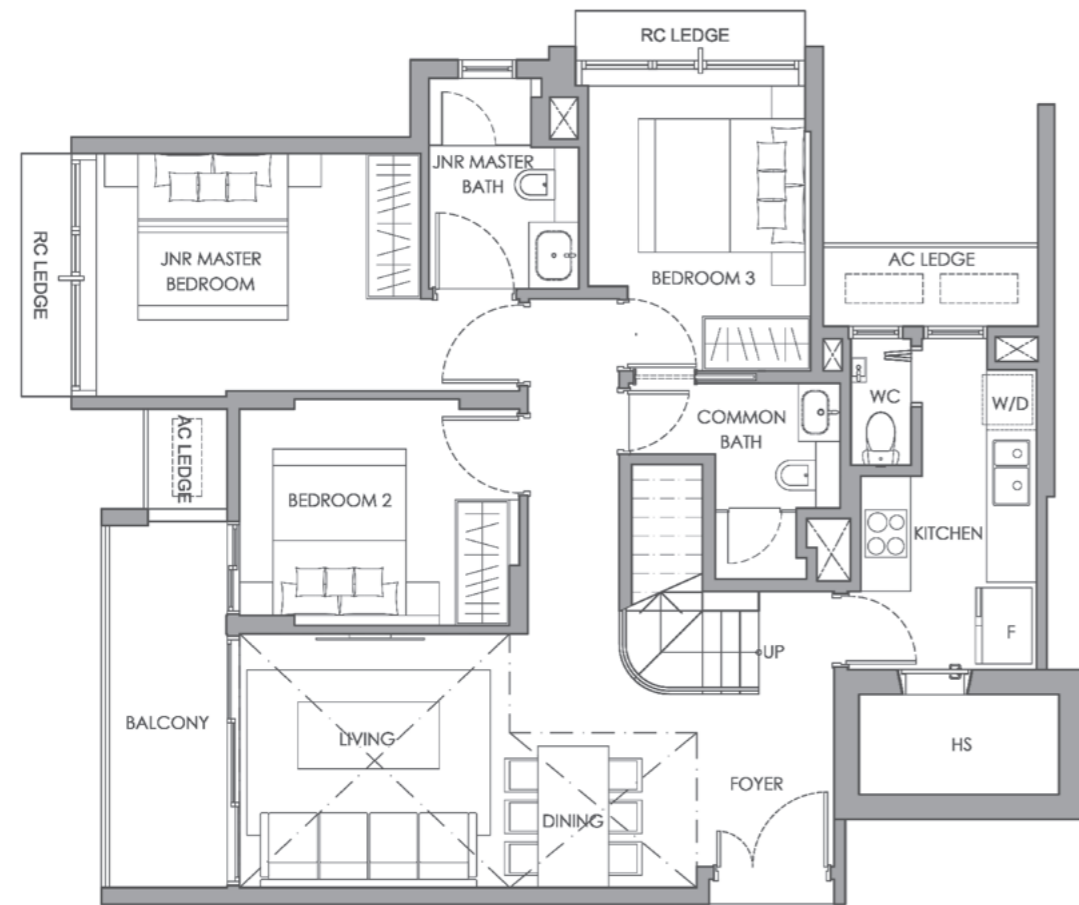


4-Bedroom Penthouse

Type B6 PH

153 SQ M / 1647 SQ FT

#05-11



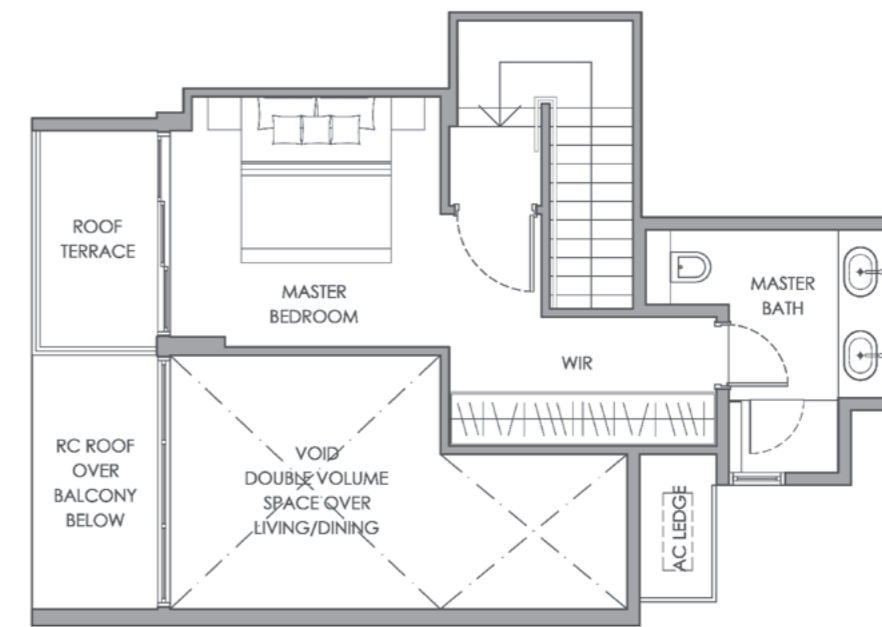
LOWER PLAN

4-Bedroom Penthouse

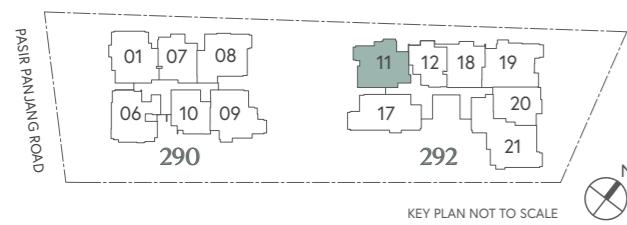
Type B6 PH

153 SQ M / 1647 SQ FT

#05-11



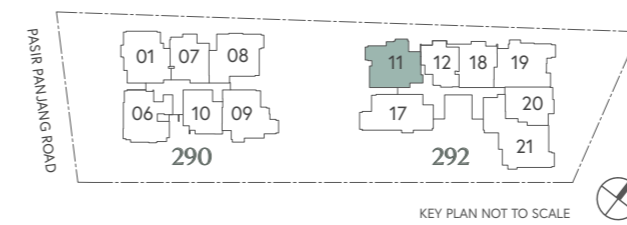
UPPER PLAN



KEY PLAN NOT TO SCALE



- | | | | |
|---------------|--------------------------|-----------|--|
| LEGEND | | | |
| F | - Fridge Space | A/C LEDGE | - Air-Con Ledge |
| W/D | - Washer Cum Dryer | RC LEDGE | - Reinforced Concrete Ledge
(Excluded from strata area) |
| DB | - Distribution Board Box | | - Service Void Space
(Excluded from strata area) |
| WC | - Water Closet | | |
| HS | - Household Shelter | | |



KEY PLAN NOT TO SCALE



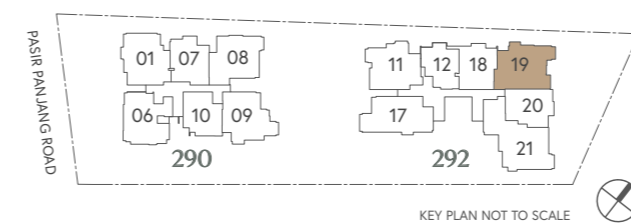
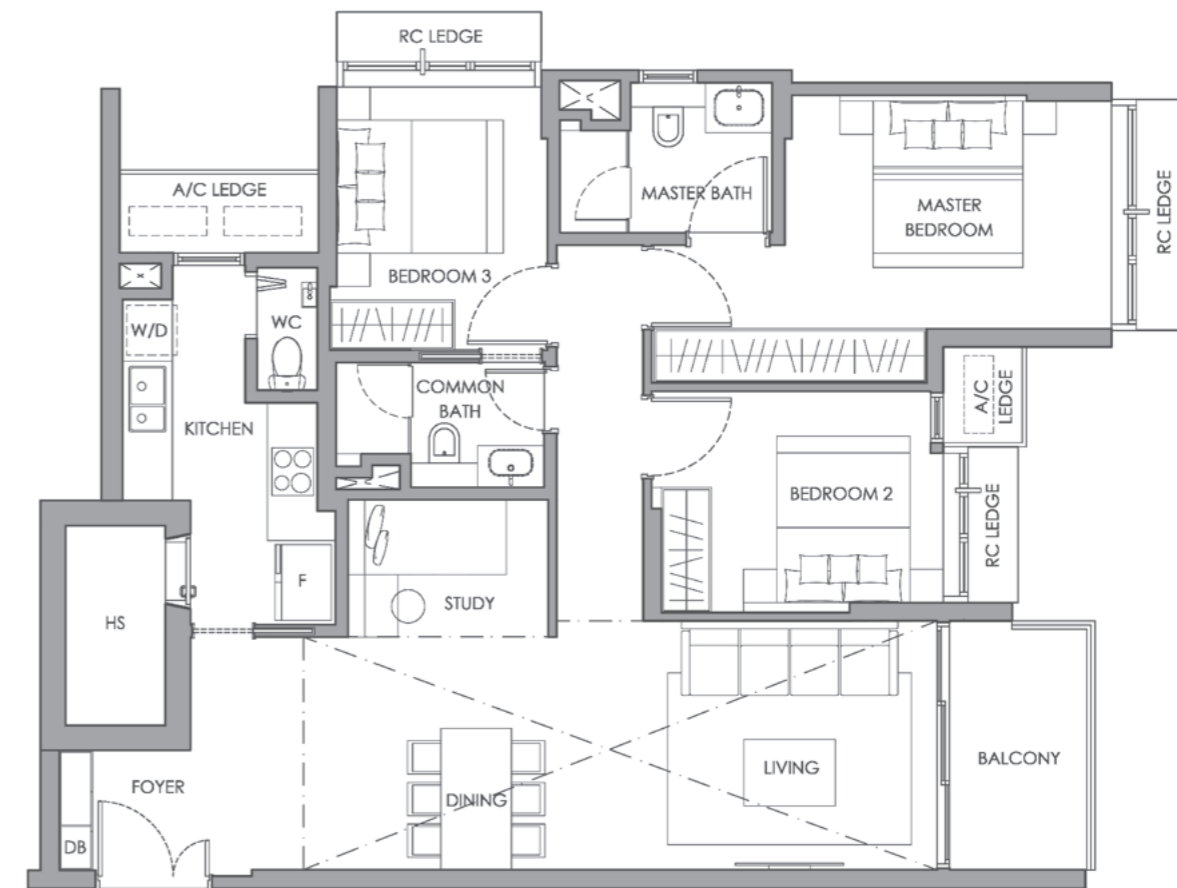
- | | | | |
|---------------|--------------------------|-----------|--|
| LEGEND | | | |
| F | - Fridge Space | A/C LEDGE | - Air-Con Ledge |
| W/D | - Washer Cum Dryer | RC LEDGE | - Reinforced Concrete Ledge
(Excluded from strata area) |
| DB | - Distribution Board Box | | - Service Void Space
(Excluded from strata area) |
| WC | - Water Closet | | |
| HS | - Household Shelter | | |

3-Bedroom Premium Penthouse

Type B7 PH

134 SQ M / 1442 SQ FT

#05-19

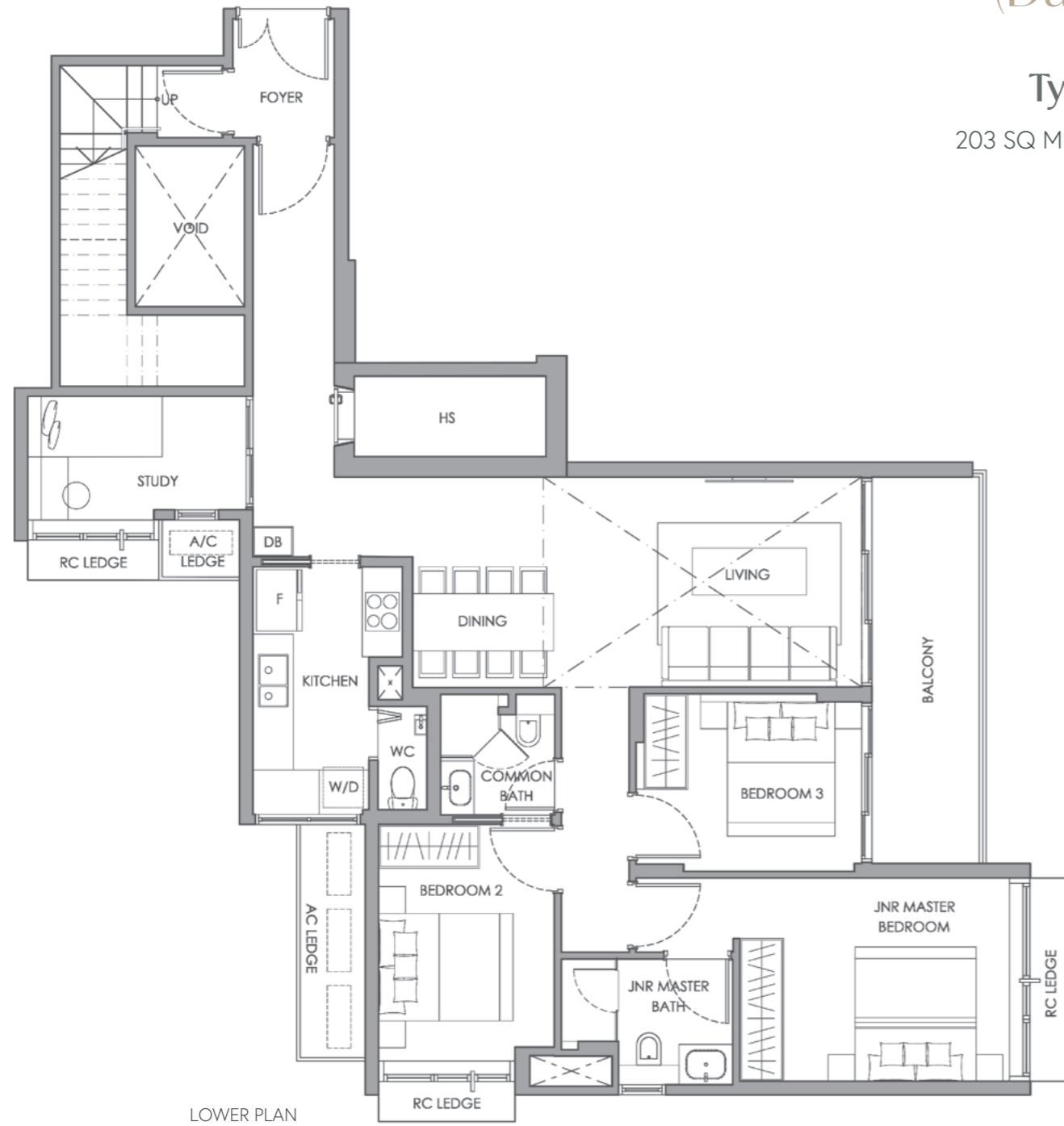


- LEGEND
- F - Fridge Space
 - W/D - Washer Cum Dryer
 - DB - Distribution Board Box
 - WC - Water Closet
 - HS - Household Shelter
 - A/C LEDGE - Air-Con Ledge
 - RC LEDGE - Reinforced Concrete Ledge (Excluded from strata area)
 - Service Void Space (Excluded from strata area)

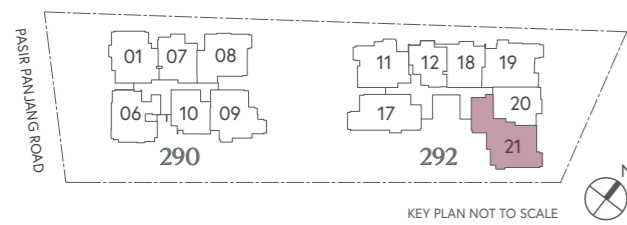
4-bedroom Premium Penthouse (Dual-Key)

Type C1 PH

203 SQ M / 2185 SQ FT
#05-21



LOWER PLAN

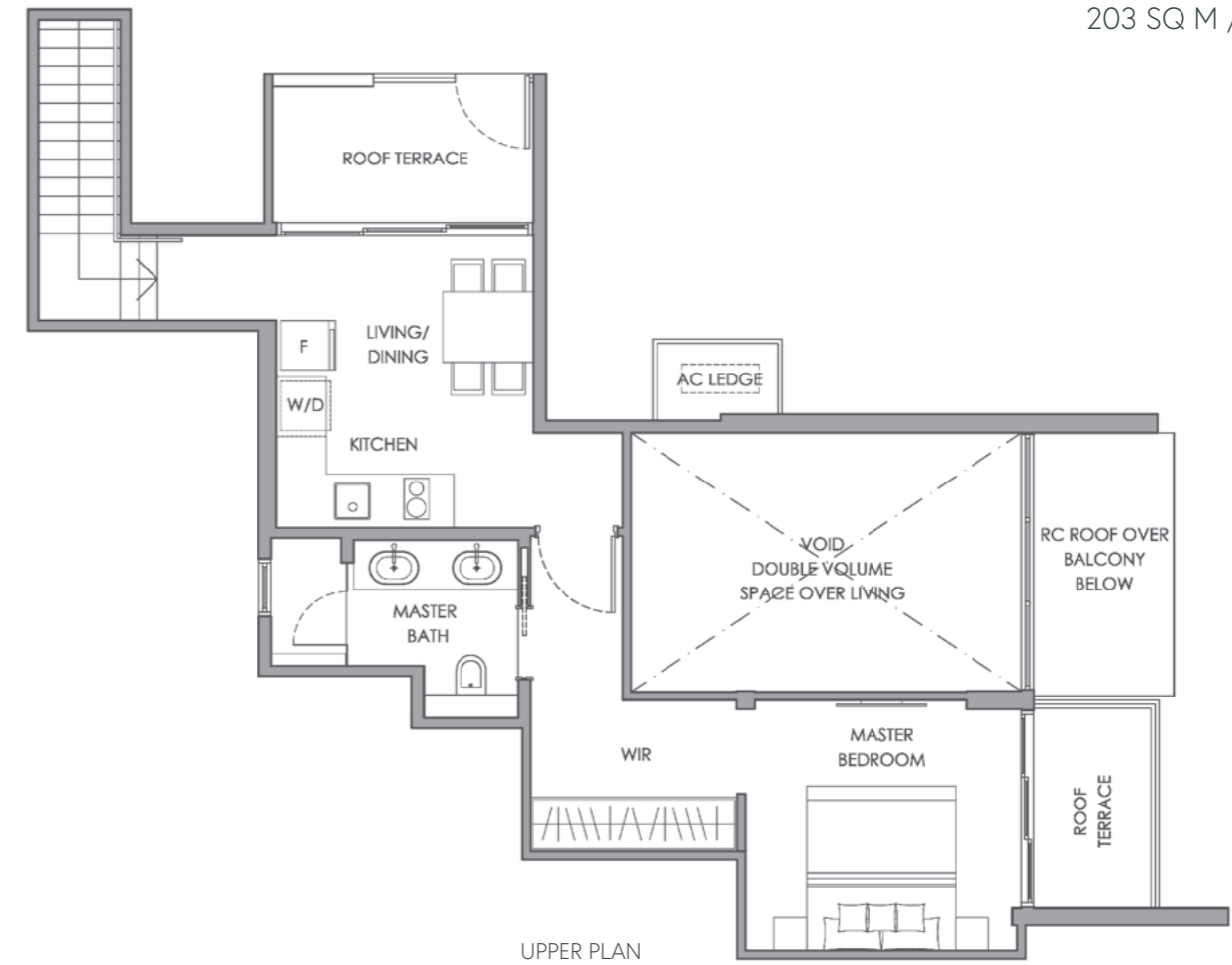


- | | | | |
|---------------|--------------------------|------------------|--|
| LEGEND | | A/C LEDGE | - Air-Con Ledge |
| F | - Fridge Space | RC LEDGE | - Reinforced Concrete Ledge
(Excluded from strata area) |
| W/D | - Washer Cum Dryer | | - Service Void Space
(Excluded from strata area) |
| DB | - Distribution Board Box | | |
| WC | - Water Closet | | |
| HS | - Household Shelter | | |

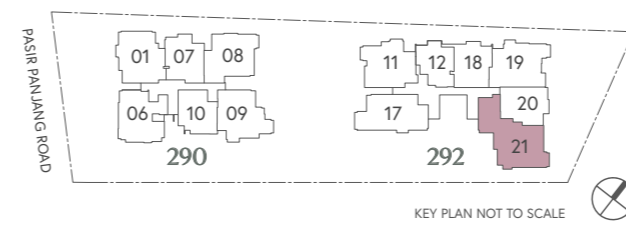
4-bedroom Premium Penthouse (Dual-Key)

Type C1 PH

203 SQ M / 2185 SQ FT
#05-21



UPPER PLAN



- | | | | |
|---------------|--------------------------|------------------|--|
| LEGEND | | A/C LEDGE | - Air-Con Ledge |
| F | - Fridge Space | RC LEDGE | - Reinforced Concrete Ledge
(Excluded from strata area) |
| W/D | - Washer Cum Dryer | | - Service Void Space
(Excluded from strata area) |
| DB | - Distribution Board Box | | |
| WC | - Water Closet | | |
| HS | - Household Shelter | | |