



5-MIN WALK TO BRADDELL MRT STATION



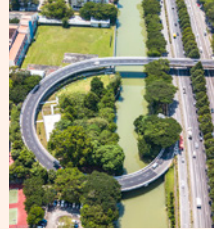
2-MIN WALK TO TOA PAYOH PALM SPRING MARKET & FOOD CENTRE



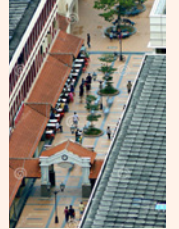
NEAR GOOD SCHOOLS



CENTRAL EXPRESSWAY & PAN ISLAND EXPRESSWAY



TOA PAYOH TOWN CENTRE



HDB HUB



SAFRA TOA PAYOH



4 MRT STOPS TO ORCHARD ROAD



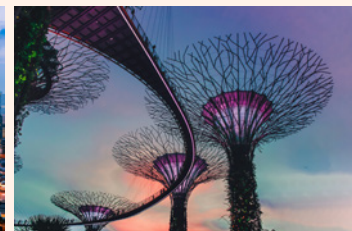
7 MRT STOPS TO CITY HALL



8 MRT STOPS TO CENTRAL BUSINESS DISTRICT



9 MRT STOPS TO GARDENS BY THE BAY



CONNECTIVITY

Braddell MRT Station
Toa Payoh MRT Station & Bus Interchange
Bishan MRT Interchange (NSL & CCL)
Caldecott MRT Interchange (CCL & TEL)
Newton MRT Interchange (NSL & DTL)
Central Expressway (CTE)
Pan Island Expressway (PIE)

PARKS AND RECREATION

Toa Payoh Sensory Park
Toa Payoh Public Library
SAFRA Toa Payoh
Bishan-Ang Mo Kio Park
MacRitchie Reservoir

HEALTHCARE

Chung Hwa Medical Institution Toa Payoh HQ
Toa Payoh Polyclinic
Mount Alvernia Hospital
Mount Elizabeth Novena Hospital
National Skin Centre
Ren Ci Community Hospital
Tan Tock Seng Hospital
Thomson Medical Centre

RETAIL AND DINING

HDB Hub
Toa Payoh Town Centre
Toa Payoh Palm Spring Market & Hawker Centre
Toa Payoh West Market & Food Centre
Toa Payoh Vista Market
Toa Payoh Lor 5 Food Centre
Toa Payoh Lor 8 Market & Food Centre
Kim Keat Palm Market & Food Centre

1 MRT stop

Junction 8

2 MRT stops

Novena Square
Novena Square 2
United Square
Velocity

4 MRT stops

Orchard Road

EDUCATION

Beatty Secondary School
CHIJ Primary & Secondary (Toa Payoh)
First Toa Payoh Primary School
Kheng Cheng School
Pei Chun Public School
Raffles Girls' School (Secondary)
Raffles Institution
St. Joseph's Institution International



LEGEND

- EXPRESSWAY
- MAJOR ROAD
- MINOR ROAD
- GREEN SPACE
- NORTH-SOUTH MRT LINE
- CIRCLE MRT LINE
- THOMSON-EAST COAST MRT LINE
- RESERVOIR OR WATERWAYS

MAP NOT DRAWN TO SCALE

THE LOCATION MAP IS TAKEN FROM WWW.ONEMAP.GOV.SG AS AT DECEMBER 2024. WHILE REASONABLE CARE HAS BEEN TAKEN IN THE PREPARATION OF THE LOCATION MAP AND THE DEPICTION OF AMENITIES (INCLUDING THE LOCATIONS OF THE SCHOOLS) SHOWN IN THE LOCATION MAP SURROUNDING THE HOUSING PROJECT ARE PURELY TO PROVIDE GENERAL INFORMATION ON THE HOUSING PROJECT TO BE CONSTRUCTED AND THE AMENITIES SURROUNDING THE HOUSING PROJECT, WHICH ARE SUBJECT TO CHANGE WITHOUT NOTICE AS DETERMINED BY THE RELEVANT AUTHORITIES OR OTHERWISE, THE LOCATION MAP IS NOT TO BE RELIED ON AS IF IT CONTAINS ANY STATEMENTS OR REPRESENTATIONS OF FACT OR WARRANTIES (WHETHER EXPRESSLY OR IMPLIED) BY THE DEVELOPER AND INTENDING PURCHASERS SHOULD, IF THEY WISH, SEEK CONFIRMATION FROM THE RELEVANT AUTHORITIES ON THE ACCURACY, RELIABILITY OR COMPLETENESS OF THE INFORMATION HEREIN. FOR HOME-SCHOOL, DISTANCE AND SCHOOL ADMISSION CRITERIA, PLEASE OBTAIN THE RELEVANT AUTHORITY'S CONFIRMATION.

SCHEMATIC DIAGRAM

BLOCK 10 LORONG 1 TOA PAYOH
SINGAPORE 319974

UNIT/ FLOOR	01	02	03	04	05	06	07	08	09	10
40	B2	E1	C3DK	A1S	B1	C1	C2A	D1	B4S	B3
39	B2	E1	C3DK	A1S	B1	C1	C2A	D1	B4S	B3
38	B2	E1	C3DK	A1S	B1	C1	C2A	D1	B4S	B3
37	B2	E1	C3DK	A1S	B1	C1	C2A	D1	B4S	B3
36	B2	E1	C3DK	A1S	B1	C1	C2A	D1	B4S	B3
35	B2	E1	C3DK	A1S	B1	C1	C2A	D1	B4S	B3
34	B2	E1	C3DK	A1S	B1	C1	C2A	D1	B4S	B3
33	B2	E1	C3DK	A1S	B1	C1	C2A	D1	B4S	B3
32	B2	E1	C3DK	A1S	B1	C1	C2A	D1	B4S	B3
31	B2	E1	C3DK	A1S	B1	C1	C2A	D1	B4S	B3
30	B2	E1	C3DK	A1S	B1	C1	C2A	D1	B4S	B3
29	B2	E1	C3DK	A1S	B1	C1	C2A	D1	B4S	B3
28	B2	E1	C3DK	A1S	B1	C1	C2A	D1	B4S	B3
27	B2	E1	C3DK	A1S	B1	C1	C2A	D1	B4S	B3
26	B2	E1	C3DK	A1S	B1	C1	C2A	D1	B4S	B3
25	B2	E1	C3DK	A1S	B1	C1	C2A	D1	B4S	B3
24	B2	E1	C3DK	A1S	B1	C1	C2A	D1	B4S	B3
23	B2	E1	C3DK	A1S	B1	C1	C2A	D1	B4S	B3
22	B2	E1	C3DK	A1S	B1	C1	C2A	D1	B4S	B3
21	B2	E1	C3DK	A1S	B1	C1	C2A	D1	B4S	B3
20	B2	E1	C3DK	A1S	B1	C1	C2A	D1	B4S	B3
19	B2	E1	C3DK	A1S	B1	C1	C2A	D1	B4S	B3
18	B2	E1	C3DK	A1S	B1	C1	C2A	D1	B4S	B3
17	B2	E1	C3DK	A1S	B1	C1	C2A	D1	B4S	B3
16	B2	E1	C3DK	A1S	B1	C1	C2A	D1	B4S	B3
15	B2	E1	C3DK	A1S	B1	C1	C2A	D1	B4S	B3
14	B2	E1	C3DK	A1S	B1	C1	C2A	D1	B4S	B3
13	B2	E1	C3DK	A1S	B1	C1	C2A	D1	B4S	B3
12	B2	E1	C3DK	A1S	B1	C1	C2A	D1	B4S	B3
11	B2	E1	C3DK	A1S	B1	C1	C2A	D1	B4S	B3
10	B2	E1	C3DK	A1S	B1	C1	C2A	D1	B4S	B3
09	B2	E1	C3DK	A1S	B1	C1	C2A	D1	B4S	B3
08	B2	E1	C3DK	A1S	B1	C1	C2A	D1	B4S	B3
07	B2	E1	C3DK	A1S	B1	C1	C2A	D1	B4S	B3
06	B2	E1	C3DK	A1S	B1	C1	C2A	D1	B4S	B3
05	B2	E1	C3DK	A1S	B1	C1	C2A	D1	B4S	B3
04	B2	E1	C3DK	A1S	B1	C1	C2A	D1	B4S	B3
03	B2	E1	C3DK	A1S	B1	C1	C2A	D1	B4S	B3
02	C3DK	A1S	B1	C1	C2A	D1	B4S			

- 1-Bedroom + Study
- 2-Bedroom
- 3-Bedroom
- 4-Bedroom Premium + Study
- 2-Bedroom Premium
- 3-Bedroom Premium
- 5-Bedroom

BLOCK 12 LORONG 1 TOA PAYOH
SINGAPORE 319975

UNIT/ FLOOR	11	12	13	14	15	16	17	18	19	20
40	B2	E1	C2	A1S	B1	C1	D2	D3S	B4S	B3
39	B2	E1	C2	A1S	B1	C1	D2	D3S	B4S	B3
38	B2	E1	C2	A1S	B1	C1	D2	D3S	B4S	B3
37	B2	E1	C2	A1S	B1	C1	D2	D3S	B4S	B3
36	B2	E1	C2	A1S	B1	C1	D2	D3S	B4S	B3
35	B2	E1	C2	A1S	B1	C1	D2	D3S	B4S	B3
34	B2	E1	C2	A1S	B1	C1	D2	D3S	B4S	B3
33	B2	E1	C2	A1S	B1	C1	D2	D3S	B4S	B3
32	B2	E1	C2	A1S	B1	C1	D2	D3S	B4S	B3
31	B2	E1	C2	A1S	B1	C1	D2	D3S	B4S	B3
30	B2	E1	C2	A1S	B1	C1	D2	D3S	B4S	B3
29	B2	E1	C2	A1S	B1	C1	D2	D3S	B4S	B3
28	B2	E1	C2	A1S	B1	C1	D2	D3S	B4S	B3
27	B2	E1	C2	A1S	B1	C1	D2	D3S	B4S	B3
26	B2	E1	C2	A1S	B1	C1	D2	D3S	B4S	B3
25	B2	E1	C2	A1S	B1	C1	D2	D3S	B4S	B3
24	B2	E1	C2	A1S	B1	C1	D2	D3S	B4S	B3
23	B2	E1	C2	A1S	B1	C1	D2	D3S	B4S	B3
22	B2	E1	C2	A1S	B1	C1	D2	D3S	B4S	B3
21	B2	E1	C2	A1S	B1	C1	D2	D3S	B4S	B3
20	B2	E1	C2	A1S	B1	C1	D2	D3S	B4S	B3
19	B2	E1	C2	A1S	B1	C1	D2	D3S	B4S	B3
18	B2	E1	C2	A1S	B1	C1	D2	D3S	B4S	B3
17	B2	E1	C2	A1S	B1	C1	D2	D3S	B4S	B3
16	B2	E1	C2	A1S	B1	C1	D2	D3S	B4S	B3
15	B2	E1	C2	A1S	B1	C1	D2	D3S	B4S	B3
14	B2	E1	C2	A1S	B1	C1	D2	D3S	B4S	B3
13	B2	E1	C2	A1S	B1	C1	D2	D3S	B4S	B3
12	B2	E1	C2	A1S	B1	C1	D2	D3S	B4S	B3
11	B2	E1	C2	A1S	B1	C1	D2	D3S	B4S	B3
10	B2	E1	C2	A1S	B1	C1	D2	D3S	B4S	B3
09	B2	E1	C2	A1S	B1	C1	D2	D3S	B4S	B3
08	B2	E1	C2	A1S	B1	C1	D2	D3S	B4S	B3
07	B2	E1	C2	A1S	B1	C1	D2	D3S	B4S	B3
06	B2	E1	C2	A1S	B1	C1	D2	D3S	B4S	B3
05	B2	E1	C2	A1S	B1	C1	D2	D3S	B4S	B3
04	B2	E1	C2	A1S	B1	C1	D2	D3S	B4S	B3
03	B2	E1	C2	A1S	B1	C1	D2	D3S	B4S	B3
02	B2	E1	C2	A1S	B1	C1	D2	D3S	B4S	B3

- 2-Bedroom Premium
- 3-Bedroom Dual Key
- 2-Bedroom Premium + Study
- 4-Bedroom



SCAN QR CODE
TO ACCESS UNIT
SPECIFICATIONS

SITE PLAN

GRAND ARRIVAL

BASEMENT 1

- 1 Arrival Court
- 2 Residential Services Counter
- 3 Grand Lobby

CLUB ORIE

LEVEL 1

- 4 Grand Function Room
- 5 Male/Female Steam Room (with Changing Room)

UPPER LEVEL 1

- 6 Gymnasium
- 7 Viewing Deck

CENTRAL GARDEN

LEVEL 1

- 8 Meadow Lounge
- 9 50m Lap Pool
- 10 Pool Deck
- 11 Poolside Lounge
- 12 Grand Lawn
- 13 Social Lounge
- 14 Water Feature
- 15 Garden Cabana
- 16 Rain Tree Lounge

Water Tank (Roof)

SERENITY GARDEN

LEVEL 1

- 17 Serenity Pod
- 18 Serenity Boardwalk
- 19 Gourmet Pavilion 1
- 20 Outdoor Fitness
- 21 Toddlers Play

SOCIAL GARDEN

UPPER LEVEL 1

- 22 Relaxation Pool
- 23 Floating Deck
- 24 Aqua Lounge
- 25 Spa Cove
- 26 Relaxation Deck
- 27 Social Function Room
- 28 Festive Function Room
- 29 Leisure Studio
- 30 Entertainment Room
- 31 Gourmet Pavilion 2
- 32 Gourmet Pavilion 3
- 33 Co-Working Lounge

PLAY GARDEN

BASEMENT 1

- 34 Pets Corner
- 35 Social Pavilion

UPPER LEVEL 1

- 36 Outdoor Reading Lounge
- 37 Meadow Garden
- 38 Garden Swing
- 39 Leisure Pavilion
- 40 Dragon Playland
- 41 Water Play Pool
- 42 Tennis Court

CANOPY GARDEN

LEVEL 2

- 43 Garden Lounge
- 44 Meditation Deck
- 45 Spice Garden

ANCILLARY

BASEMENT 1

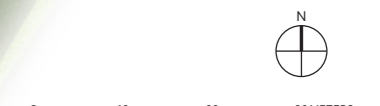
- A Guardhouse
- B Side Gate

BASEMENT 2

- C Substation
- D Genset
- E Bin Centre

LEVEL 1

- F Ventilation Shaft



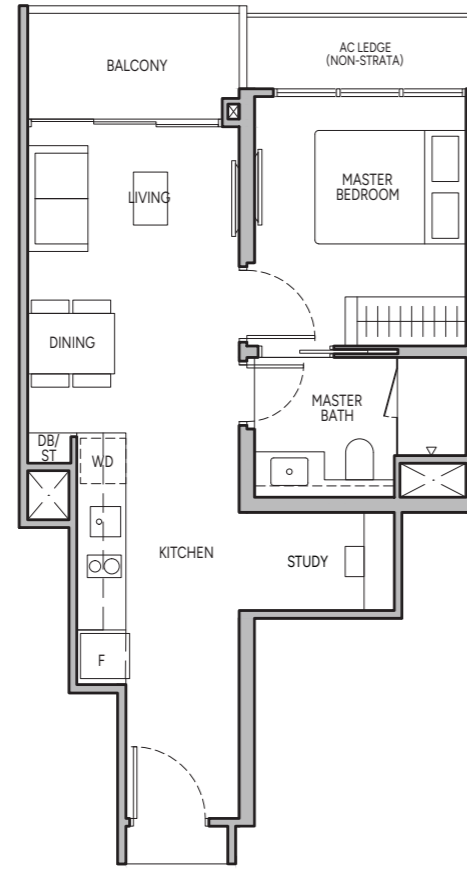
The renderings of the units as shown are for illustrative purposes only. The shading and outline of the unit type only applies to typical units. The boundary lines of the units set out here are not to be taken as a representation of the actual units. Kindly refer to the approved BP plans for the actual unit outline/boundary lines.

1-BEDROOM + STUDY

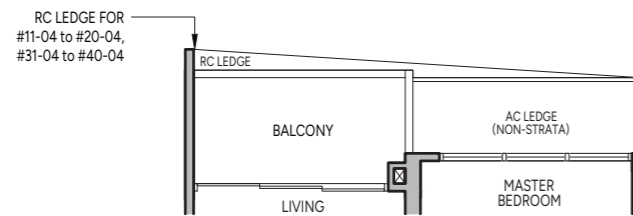
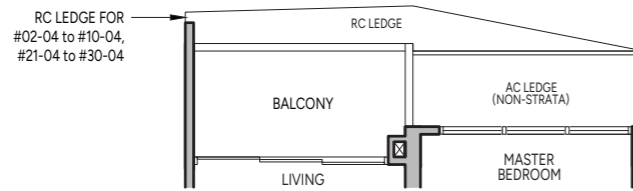
Type A1S

48 sq m / 517 sq ft

BLK 12 : #02-14 to #40-14



BLK 10 : #02-04 to #40-04

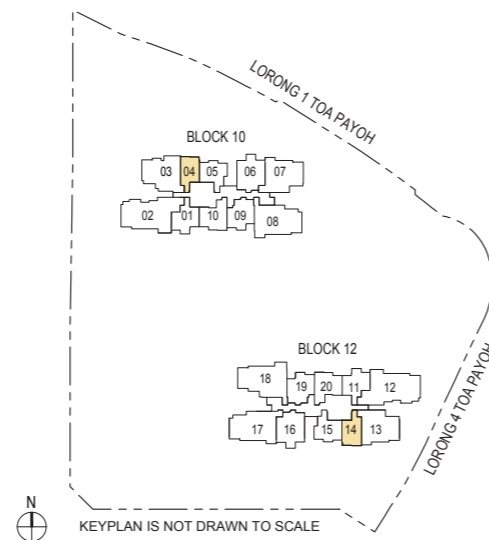


Legend (Where Applicable)

- DB/ST - Distribution Board/Storage
- WD - Washer cum Dryer
- W/D - Washer & Dryer
- F - Fridge
- WC - Water Closet
- HS - Household Shelter
- RC - Reinforced Concrete
- AC - Air-Conditioner

Wall not allowed to be hacked or altered

Area includes balcony where applicable and excludes among others, the RC - Reinforced Concrete Ledge and A/C - Air Conditioner Ledge. The plans are subject to change as may be required by relevant authorities. All floor plans and areas are subject to final survey. The balcony shall not be enclosed unless with the approved balcony screen, more particularly illustrated under the header "Approved Balcony Screen". Please refer to the letter containing the Particulars, Documents and Information relating to the development and the unit for the floor plan relating to the unit you intend to purchase. The Sale and Purchase Agreement contains the entire agreement between the developer and the purchaser and supersedes and cancels in all respects all previous representations, warranties, promises, inducements or statements of intention, whether written or oral made by the developer and/or the developer's agent which are not embodied in the Sale and Purchase Agreement.

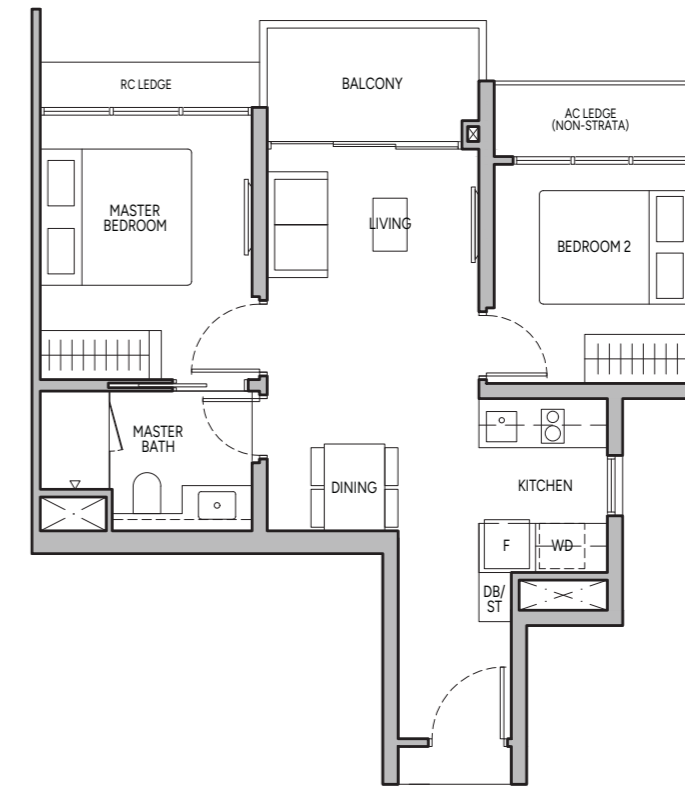


2-BEDROOM

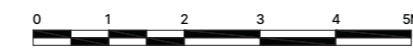
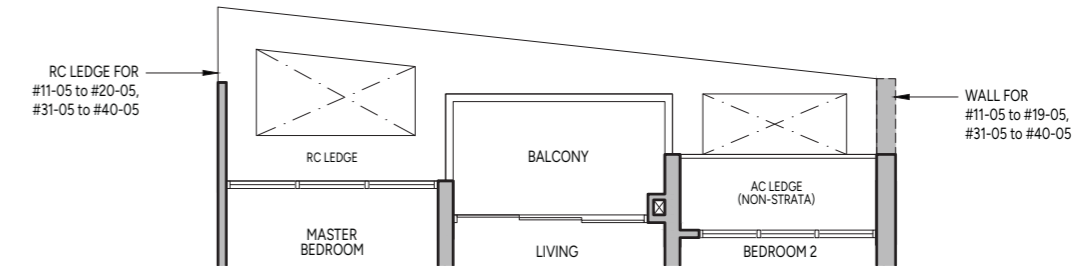
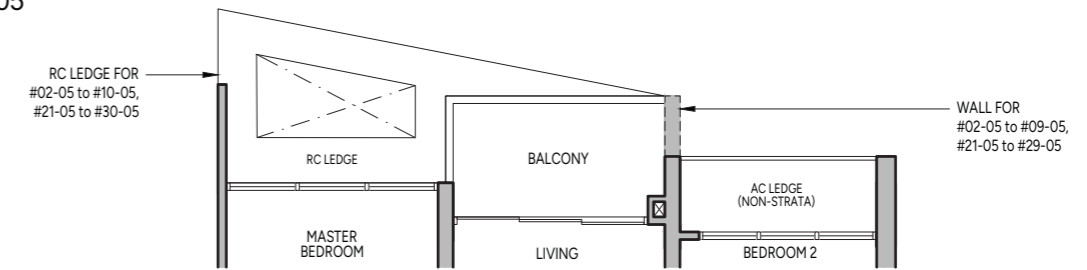
Type B1

55 sq m / 592 sq ft

BLK 12 : #02-15 to #40-15



BLK 10 : #02-05 to #40-05

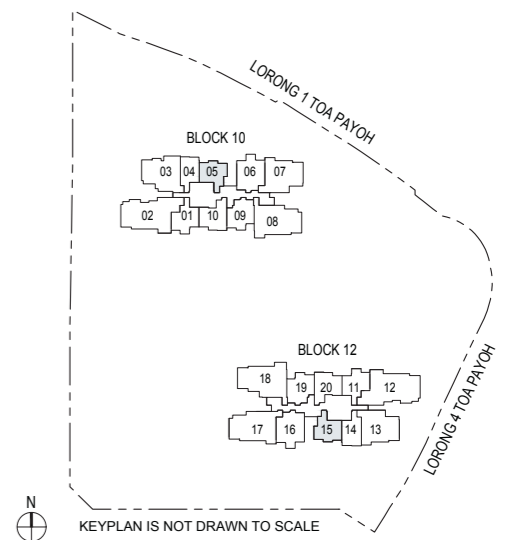


Legend (Where Applicable)

- DB/ST - Distribution Board/Storage
- WD - Washer cum Dryer
- W/D - Washer & Dryer
- F - Fridge
- WC - Water Closet
- HS - Household Shelter
- RC - Reinforced Concrete
- AC - Air-Conditioner

Wall not allowed to be hacked or altered

Area includes balcony where applicable and excludes among others, the RC - Reinforced Concrete Ledge and A/C - Air Conditioner Ledge. The plans are subject to change as may be required by relevant authorities. All floor plans and areas are subject to final survey. The balcony shall not be enclosed unless with the approved balcony screen, more particularly illustrated under the header "Approved Balcony Screen". Please refer to the letter containing the Particulars, Documents and Information relating to the development and the unit for the floor plan relating to the unit you intend to purchase. The Sale and Purchase Agreement contains the entire agreement between the developer and the purchaser and supersedes and cancels in all respects all previous representations, warranties, promises, inducements or statements of intention, whether written or oral made by the developer and/or the developer's agent which are not embodied in the Sale and Purchase Agreement.



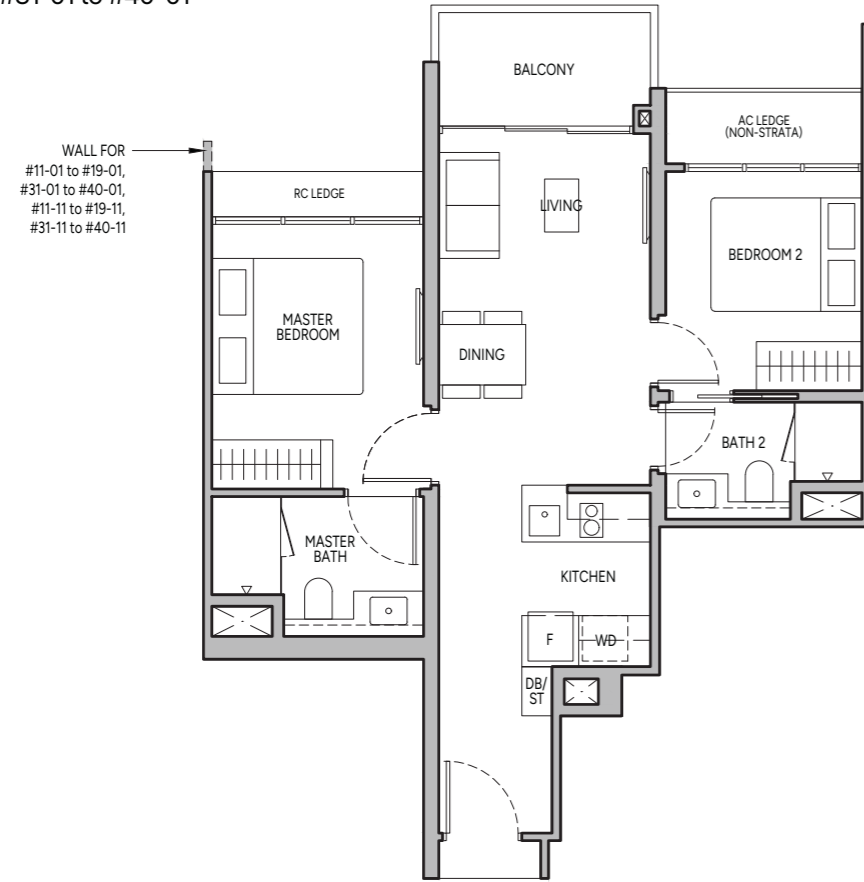
2-BEDROOM

Type B2

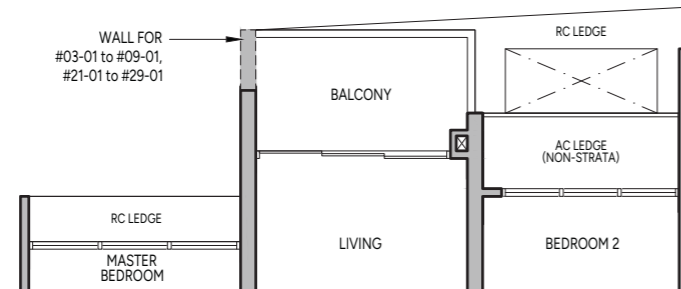
60 sq m / 646 sq ft

BLK 10 : #11-01 to #20-01, #31-01 to #40-01

BLK 12 : #02-11 to #40-11



BLK 10 : #03-01 to #10-01, #21-01 to #30-01

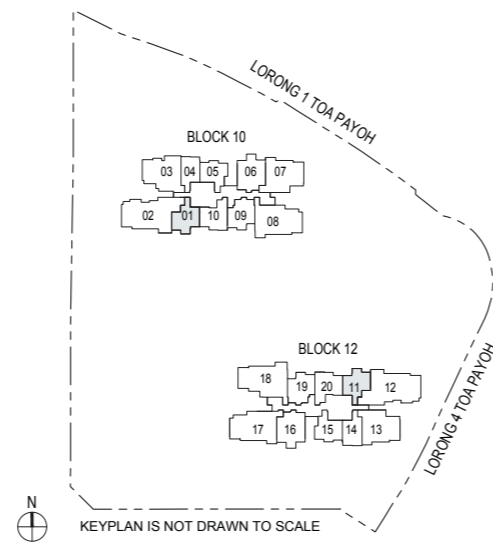


Legend (Where Applicable)

DB/ST - Distribution Board/Storage WD - Washer cum Dryer W/D - Washer & Dryer F - Fridge
 WC - Water Closet HS - Household Shelter RC - Reinforced Concrete AC - Air-Conditioner

Wall not allowed to be hacked or altered

Area includes balcony where applicable and excludes among others, the RC - Reinforced Concrete Ledge and A/C - Air Conditioner Ledge. The plans are subject to change as may be required by relevant authorities. All floor plans and areas are subject to final survey. The balcony shall not be enclosed unless with the approved balcony screen, more particularly illustrated under the header "Approved Balcony Screen". Please refer to the letter containing the Particulars, Documents and Information relating to the development and the unit for the floor plan relating to the unit you intend to purchase. The Sale and Purchase Agreement contains the entire agreement between the developer and the purchaser and supersedes and cancels in all respects all previous representations, warranties, promises, inducements or statements of intention, whether written or oral made by the developer and/or the developer's agent which are not embodied in the Sale and Purchase Agreement.



KEYPLAN IS NOT DRAWN TO SCALE

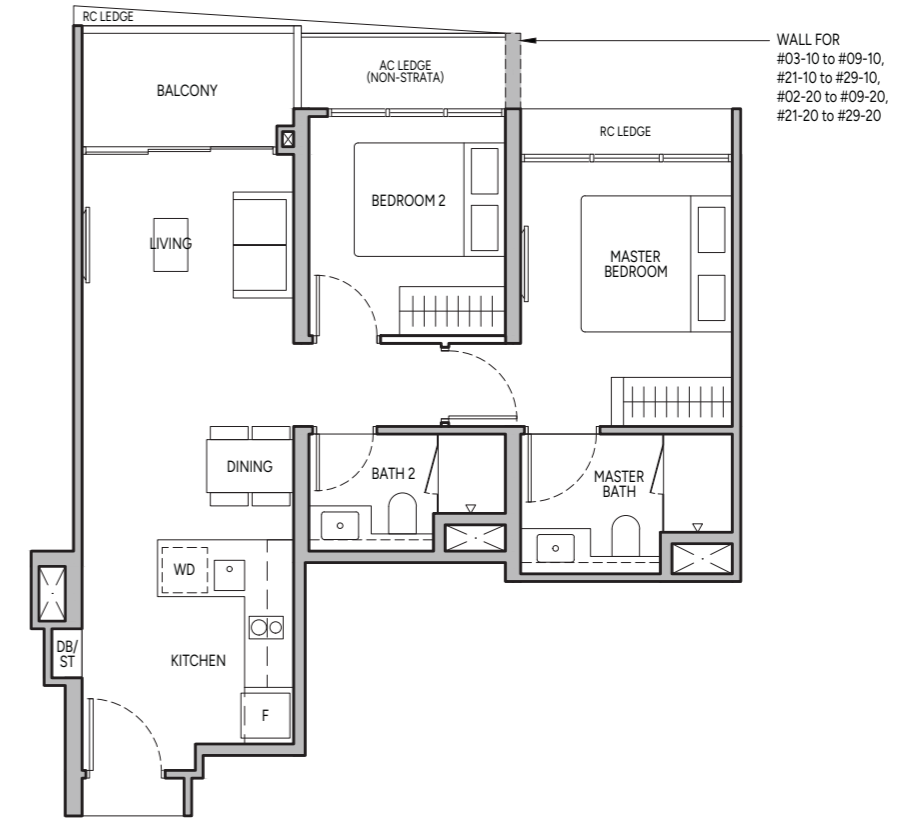
2-BEDROOM PREMIUM

Type B3

63 sq m / 678 sq ft

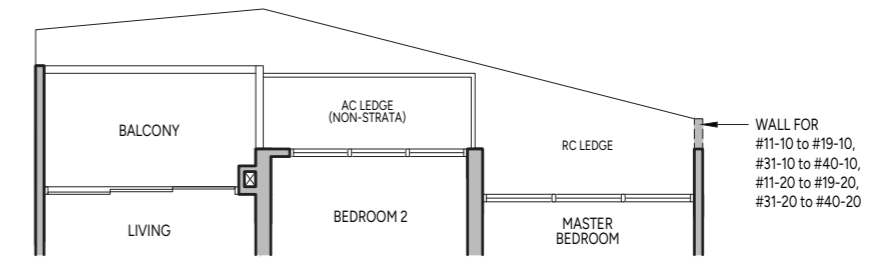
BLK 10 : #03-10 to #10-10, #21-10 to #30-10

BLK 12 : #02-20 to #10-20, #21-20 to #30-20



BLK 10 : #11-10 to #20-10, #31-10 to #40-10

BLK 12 : #11-20 to #20-20, #31-20 to #40-20

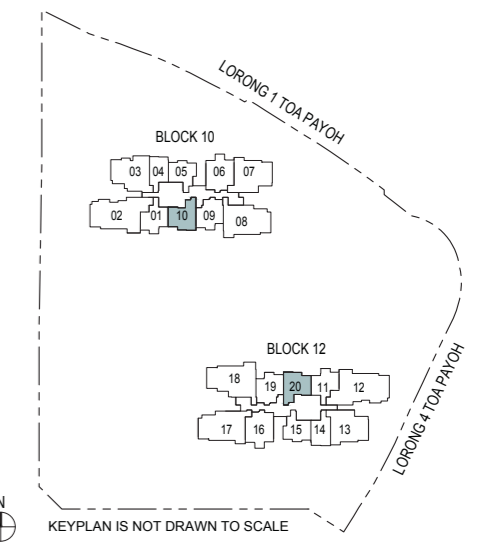


Legend (Where Applicable)

DB/ST - Distribution Board/Storage WD - Washer cum Dryer W/D - Washer & Dryer F - Fridge
 WC - Water Closet HS - Household Shelter RC - Reinforced Concrete AC - Air-Conditioner

Wall not allowed to be hacked or altered

Area includes balcony where applicable and excludes among others, the RC - Reinforced Concrete Ledge and A/C - Air Conditioner Ledge. The plans are subject to change as may be required by relevant authorities. All floor plans and areas are subject to final survey. The balcony shall not be enclosed unless with the approved balcony screen, more particularly illustrated under the header "Approved Balcony Screen". Please refer to the letter containing the Particulars, Documents and Information relating to the development and the unit for the floor plan relating to the unit you intend to purchase. The Sale and Purchase Agreement contains the entire agreement between the developer and the purchaser and supersedes and cancels in all respects all previous representations, warranties, promises, inducements or statements of intention, whether written or oral made by the developer and/or the developer's agent which are not embodied in the Sale and Purchase Agreement.



KEYPLAN IS NOT DRAWN TO SCALE

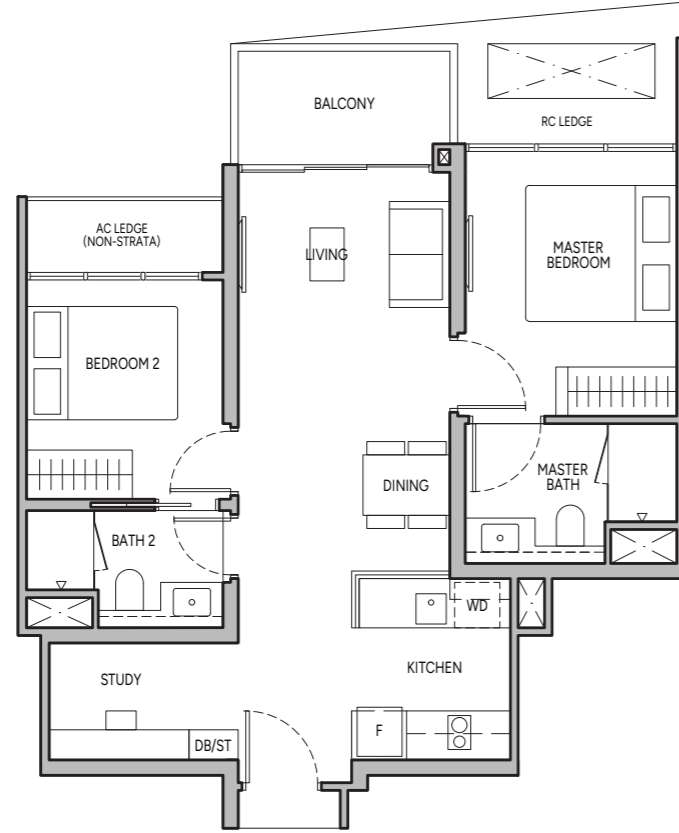
2-BEDROOM PREMIUM + STUDY

Type B4S

65 sq m / 700 sq ft

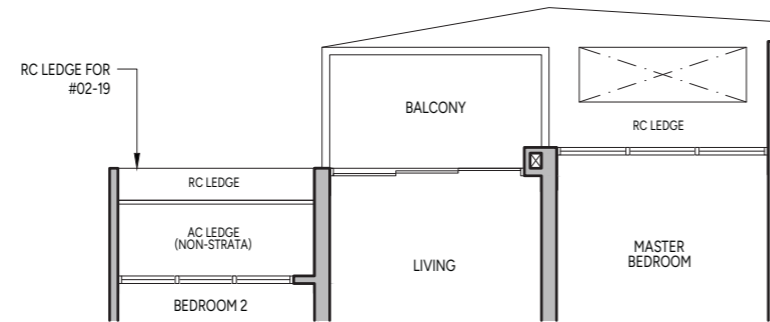
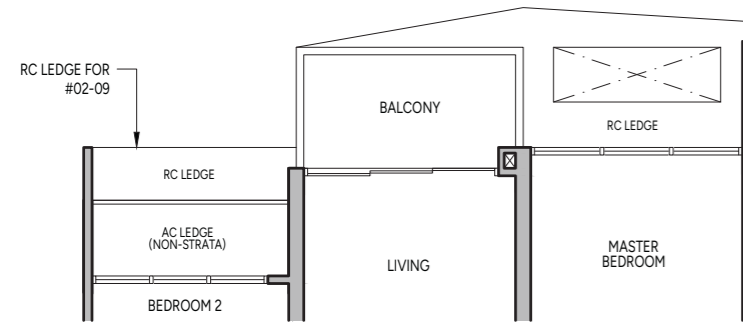
BLK 10 : #11-09 to #20-09, #31-09 to #40-09

BLK 12 : #11-19 to #20-19, #31-19 to #40-19



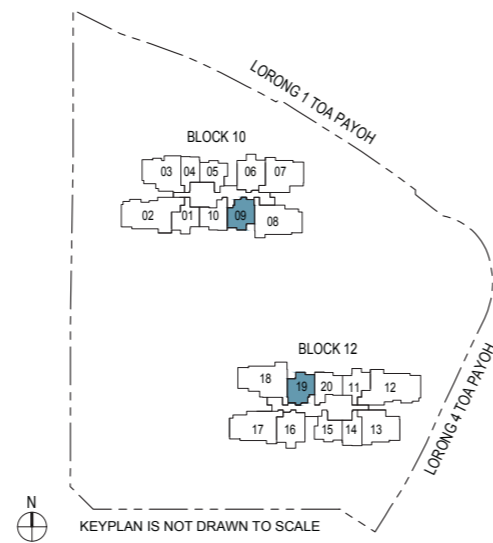
BLK 10 : #02-09 to #10-09, #21-09 to #30-09

BLK 12 : #02-19 to #10-19, #21-19 to #30-19



Legend (Where Applicable)
 DB/ST - Distribution Board/Storage WD - Washer cum Dryer W/D - Washer & Dryer F - Fridge
 WC - Water Closet HS - Household Shelter RC - Reinforced Concrete AC - Air-Conditioner
 Wall not allowed to be hacked or altered

Area includes balcony where applicable and excludes among others, the RC - Reinforced Concrete Ledge and A/C - Air Conditioner Ledge. The plans are subject to change as may be required by relevant authorities. All floor plans and areas are subject to final survey. The balcony shall not be enclosed unless with the approved balcony screen, more particularly illustrated under the header "Approved Balcony Screen". Please refer to the letter containing the Particulars, Documents and Information relating to the development and the unit for the floor plan relating to the unit you intend to purchase. The Sale and Purchase Agreement contains the entire agreement between the developer and the purchaser and supersedes and cancels in all respects all previous representations, warranties, promises, inducements or statements of intention, whether written or oral made by the developer and/or the developer's agent which are not embodied in the Sale and Purchase Agreement.



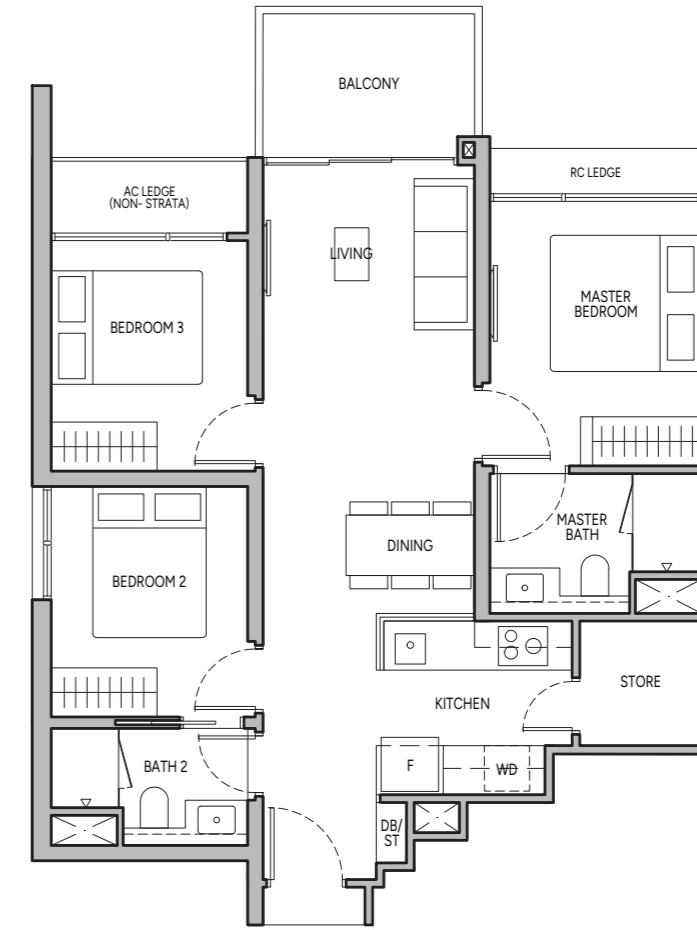
KEYPLAN IS NOT DRAWN TO SCALE

3-BEDROOM

Type C1

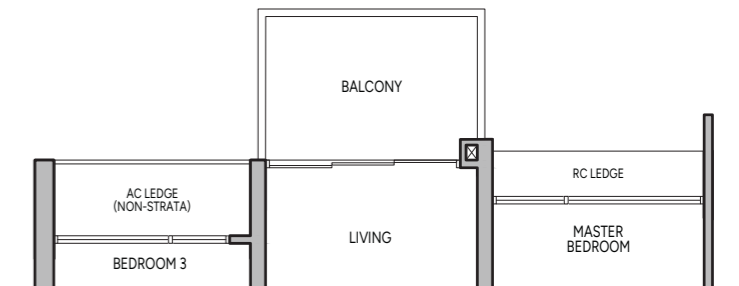
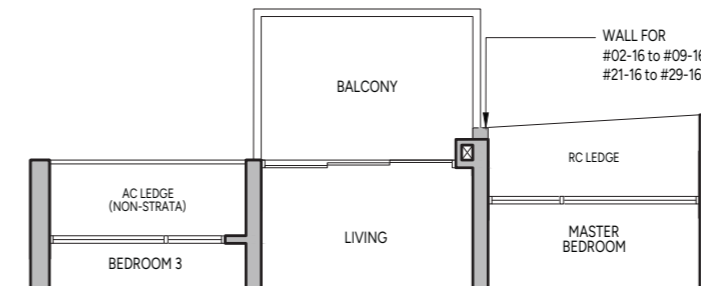
79 sq m / 850 sq ft

BLK 10 : #02-06 to #40-06



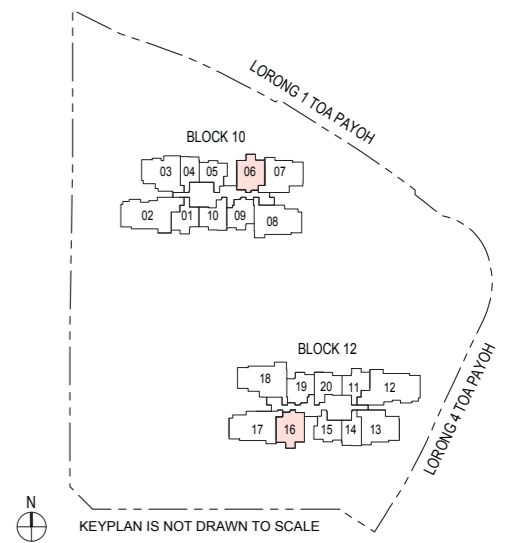
BLK 12 : #02-16 to #10-16, #21-16 to #30-16

BLK 12 : #11-16 to #20-16, #31-16 to #40-16



Legend (Where Applicable)
 DB/ST - Distribution Board/Storage WD - Washer cum Dryer W/D - Washer & Dryer F - Fridge
 WC - Water Closet HS - Household Shelter RC - Reinforced Concrete AC - Air-Conditioner
 Wall not allowed to be hacked or altered

Area includes balcony where applicable and excludes among others, the RC - Reinforced Concrete Ledge and A/C - Air Conditioner Ledge. The plans are subject to change as may be required by relevant authorities. All floor plans and areas are subject to final survey. The balcony shall not be enclosed unless with the approved balcony screen, more particularly illustrated under the header "Approved Balcony Screen". Please refer to the letter containing the Particulars, Documents and Information relating to the development and the unit for the floor plan relating to the unit you intend to purchase. The Sale and Purchase Agreement contains the entire agreement between the developer and the purchaser and supersedes and cancels in all respects all previous representations, warranties, promises, inducements or statements of intention, whether written or oral made by the developer and/or the developer's agent which are not embodied in the Sale and Purchase Agreement.



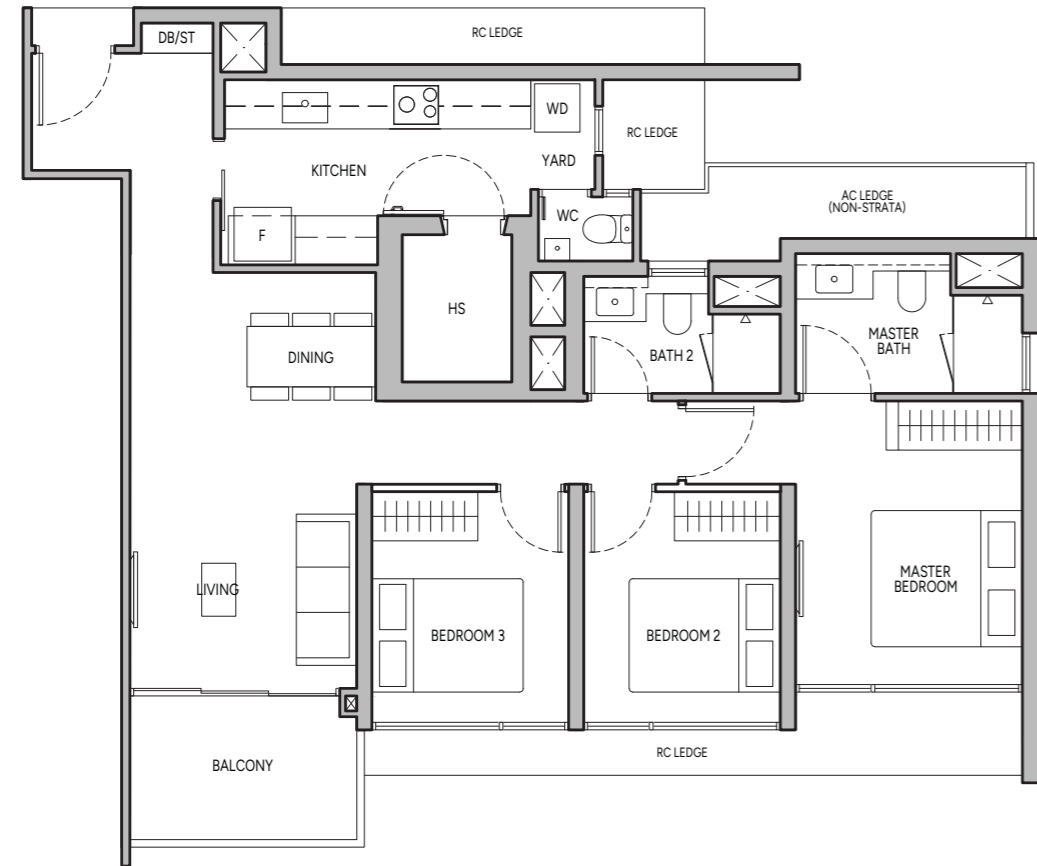
KEYPLAN IS NOT DRAWN TO SCALE

3-BEDROOM PREMIUM

Type C2

95 sq m / 1023 sq ft

BLK 12 : #02-13 to #40-13

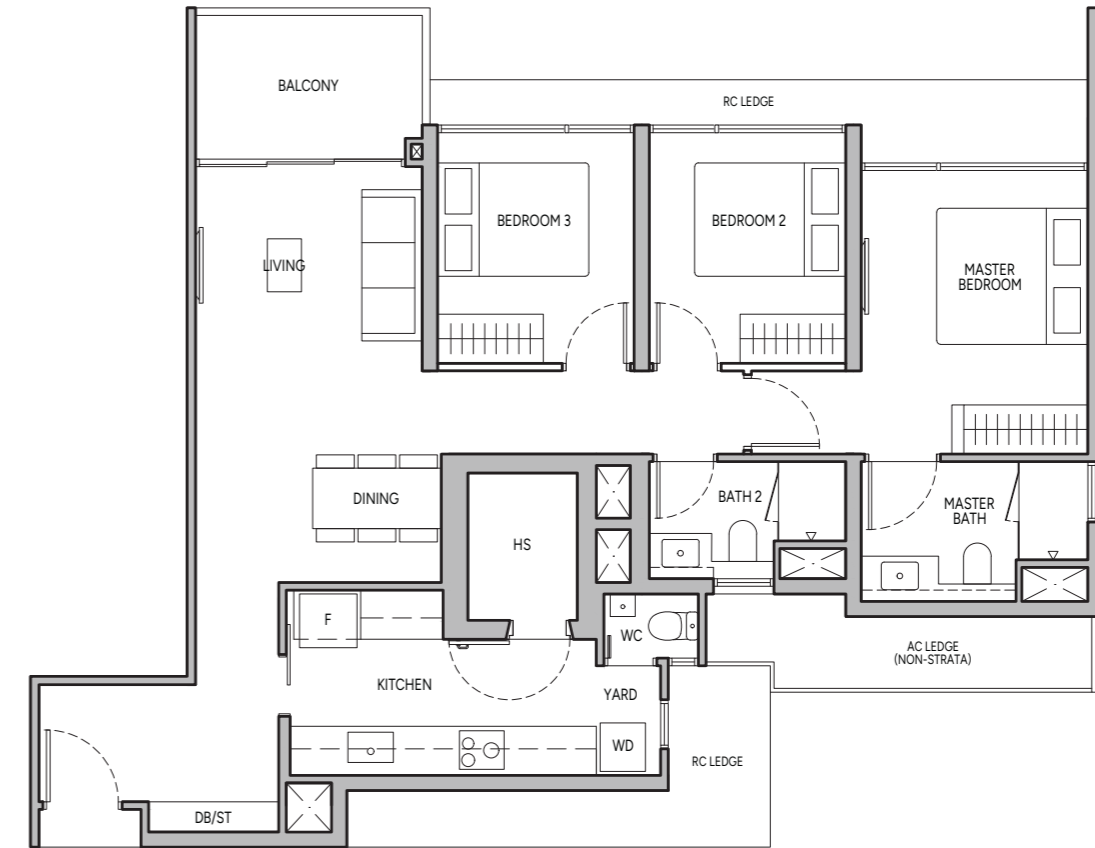


3-BEDROOM PREMIUM

Type C2A

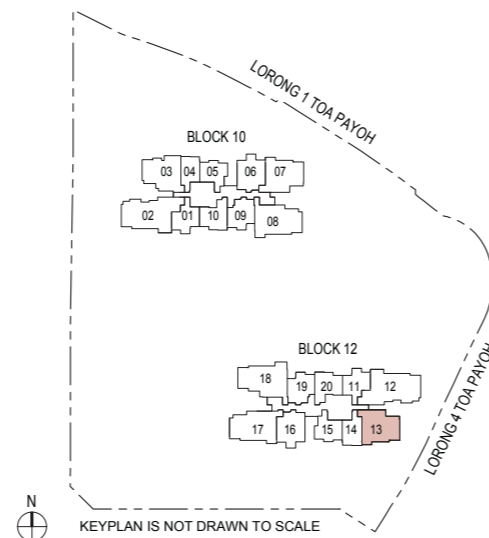
97 sq m / 1044 sq ft

BLK 10 : #02-07 to #40-07



Legend (Where Applicable)
 DB/ST - Distribution Board/Storage WD - Washer cum Dryer W/D - Washer & Dryer F - Fridge
 WC - Water Closet HS - Household Shelter RC - Reinforced Concrete AC - Air-Conditioner
 Wall not allowed to be hacked or altered

Area includes balcony where applicable and excludes among others, the RC - Reinforced Concrete Ledge and A/C - Air Conditioner Ledge. The plans are subject to change as may be required by relevant authorities. All floor plans and areas are subject to final survey. The balcony shall not be enclosed unless with the approved balcony screen, more particularly illustrated under the header "Approved Balcony Screen". Please refer to the letter containing the Particulars, Documents and Information relating to the development and the unit for the floor plan relating to the unit you intend to purchase. The Sale and Purchase Agreement contains the entire agreement between the developer and the purchaser and supersedes and cancels in all respects all previous representations, warranties, promises, inducements or statements of intention, whether written or oral made by the developer and/or the developer's agent which are not embodied in the Sale and Purchase Agreement.

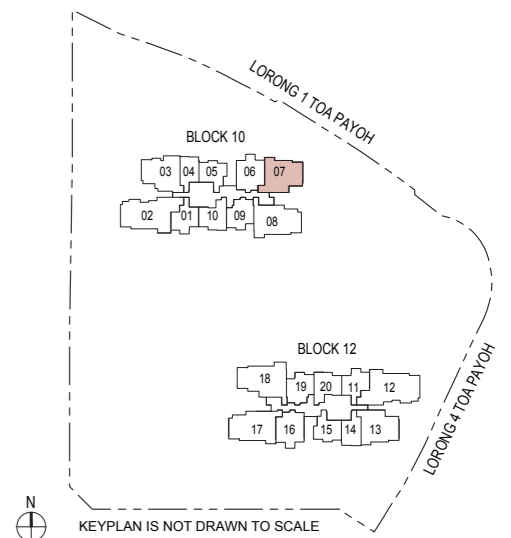


KEYPLAN IS NOT DRAWN TO SCALE



Legend (Where Applicable)
 DB/ST - Distribution Board/Storage WD - Washer cum Dryer W/D - Washer & Dryer F - Fridge
 WC - Water Closet HS - Household Shelter RC - Reinforced Concrete AC - Air-Conditioner
 Wall not allowed to be hacked or altered

Area includes balcony where applicable and excludes among others, the RC - Reinforced Concrete Ledge and A/C - Air Conditioner Ledge. The plans are subject to change as may be required by relevant authorities. All floor plans and areas are subject to final survey. The balcony shall not be enclosed unless with the approved balcony screen, more particularly illustrated under the header "Approved Balcony Screen". Please refer to the letter containing the Particulars, Documents and Information relating to the development and the unit for the floor plan relating to the unit you intend to purchase. The Sale and Purchase Agreement contains the entire agreement between the developer and the purchaser and supersedes and cancels in all respects all previous representations, warranties, promises, inducements or statements of intention, whether written or oral made by the developer and/or the developer's agent which are not embodied in the Sale and Purchase Agreement.



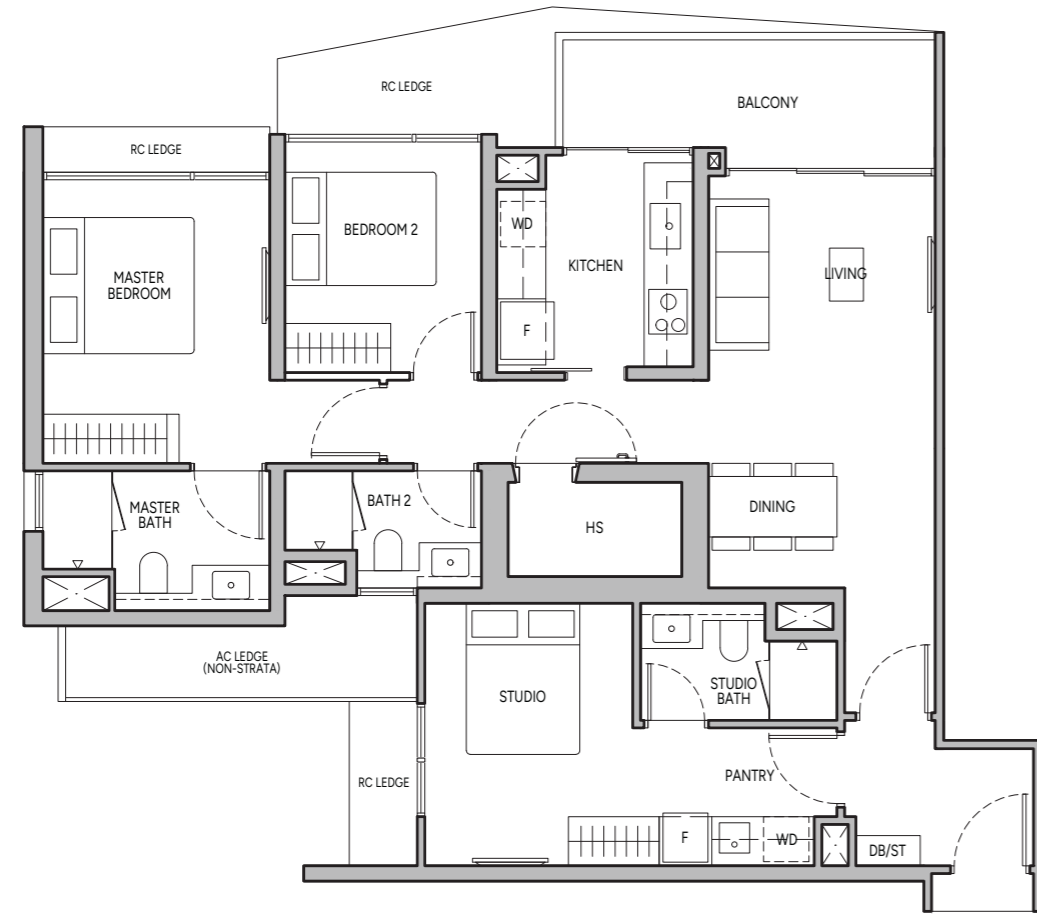
KEYPLAN IS NOT DRAWN TO SCALE

3-BEDROOM DUAL KEY

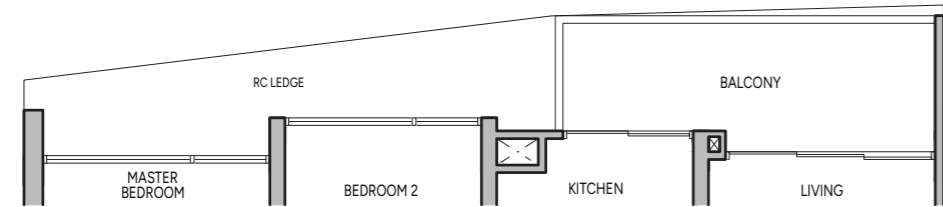
Type C3DK

105 sq m / 1130 sq ft

BLK 10 : #11-03 to #20-03, #31-03 to #40-03

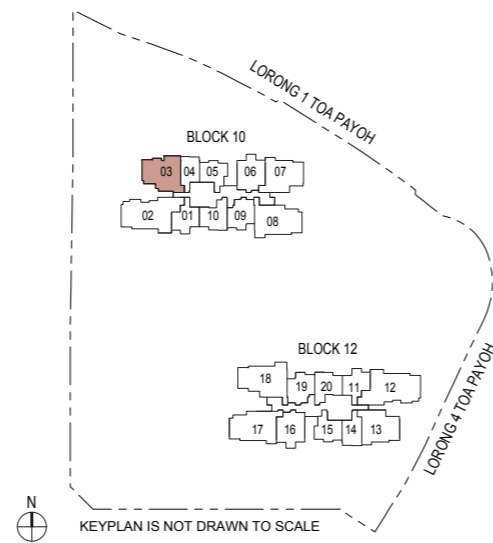


BLK 10 : #02-03 to #10-03, #21-03 to #30-03



Legend (Where Applicable)
 DB/ST - Distribution Board/Storage WD - Washer cum Dryer W/D - Washer & Dryer F - Fridge
 WC - Water Closet HS - Household Shelter RC - Reinforced Concrete AC - Air-Conditioner
 Wall not allowed to be hacked or altered

Area includes balcony where applicable and excludes among others, the RC - Reinforced Concrete Ledge and A/C - Air Conditioner Ledge. The plans are subject to change as may be required by relevant authorities. All floor plans and areas are subject to final survey. The balcony shall not be enclosed unless with the approved balcony screen, more particularly illustrated under the header "Approved Balcony Screen". Please refer to the letter containing the Particulars, Documents and Information relating to the development and the unit for the floor plan relating to the unit you intend to purchase. The Sale and Purchase Agreement contains the entire agreement between the developer and the purchaser and supersedes and cancels in all respects all previous representations, warranties, promises, inducements or statements of intention, whether written or oral made by the developer and/or the developer's agent which are not embodied in the Sale and Purchase Agreement.



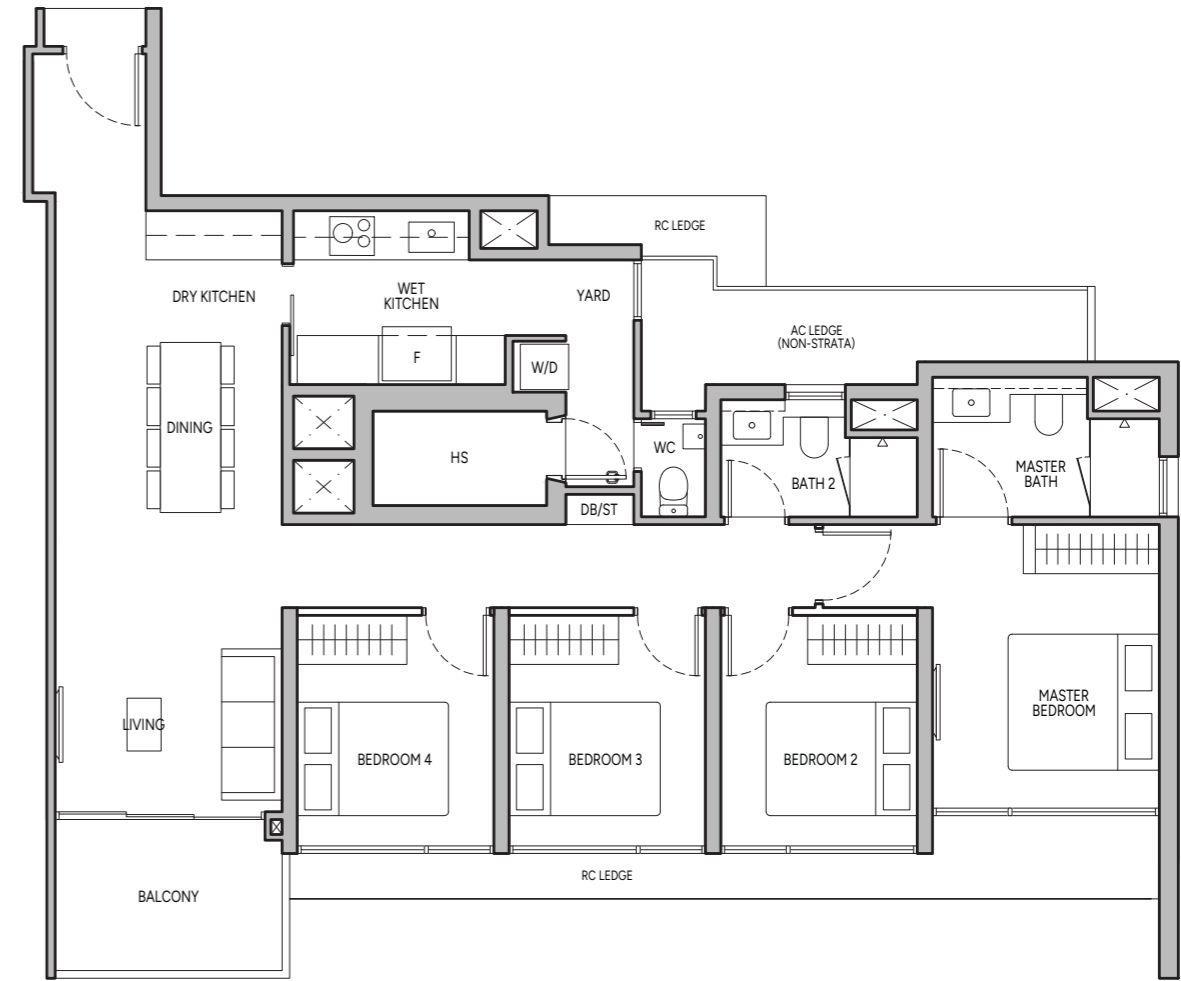
KEYPLAN IS NOT DRAWN TO SCALE

4-BEDROOM

Type D1

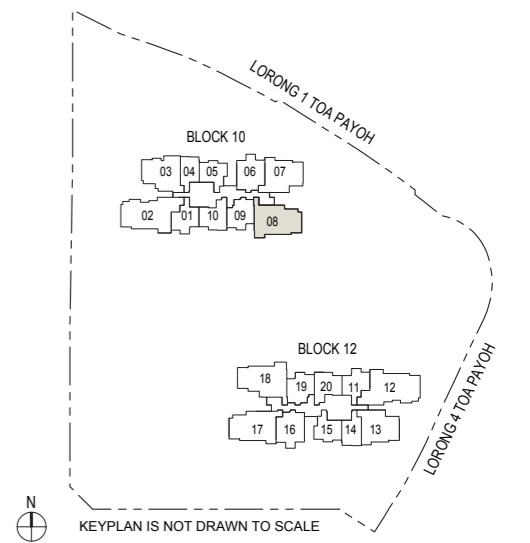
113 sq m / 1216 sq ft

BLK 10 : #02-08 to #40-08



Legend (Where Applicable)
 DB/ST - Distribution Board/Storage WD - Washer cum Dryer W/D - Washer & Dryer F - Fridge
 WC - Water Closet HS - Household Shelter RC - Reinforced Concrete AC - Air-Conditioner
 Wall not allowed to be hacked or altered

Area includes balcony where applicable and excludes among others, the RC - Reinforced Concrete Ledge and A/C - Air Conditioner Ledge. The plans are subject to change as may be required by relevant authorities. All floor plans and areas are subject to final survey. The balcony shall not be enclosed unless with the approved balcony screen, more particularly illustrated under the header "Approved Balcony Screen". Please refer to the letter containing the Particulars, Documents and Information relating to the development and the unit for the floor plan relating to the unit you intend to purchase. The Sale and Purchase Agreement contains the entire agreement between the developer and the purchaser and supersedes and cancels in all respects all previous representations, warranties, promises, inducements or statements of intention, whether written or oral made by the developer and/or the developer's agent which are not embodied in the Sale and Purchase Agreement.



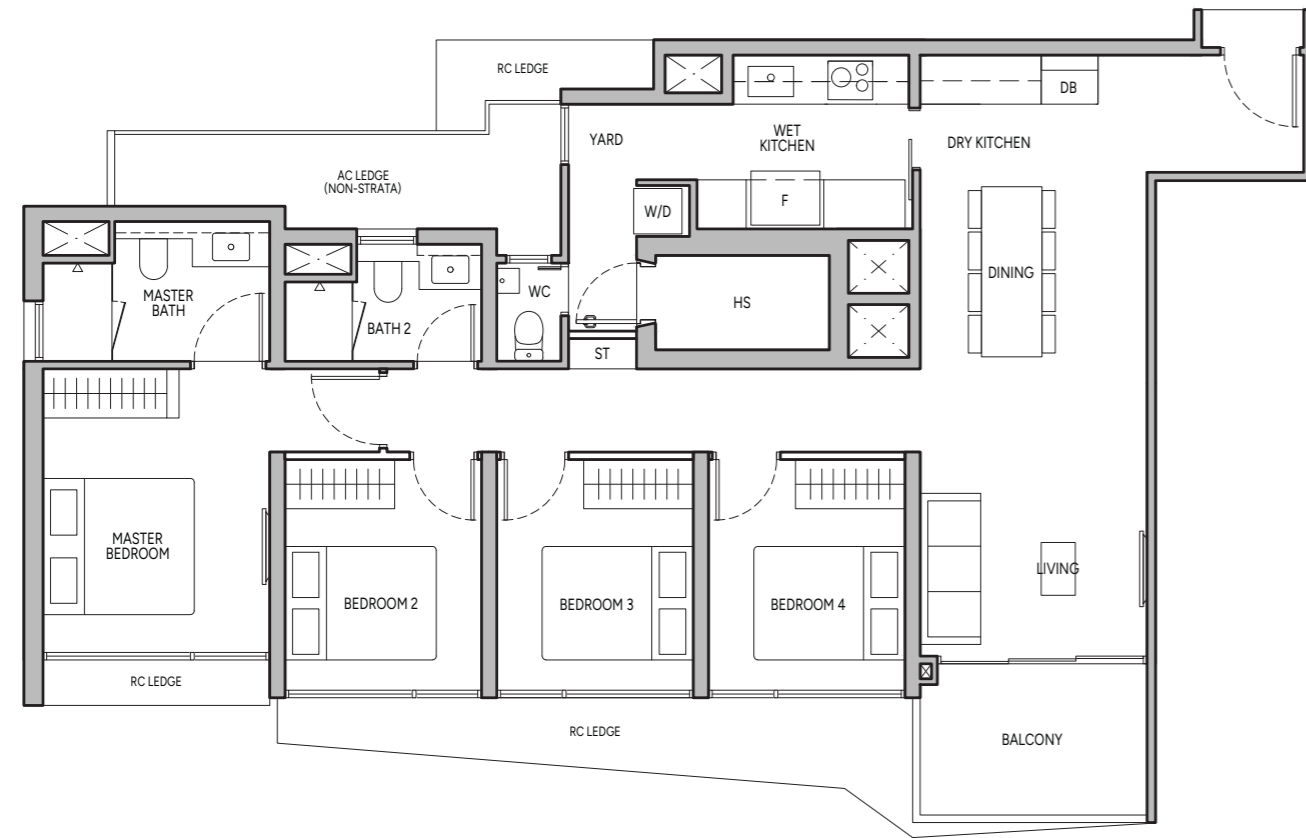
KEYPLAN IS NOT DRAWN TO SCALE

4-BEDROOM

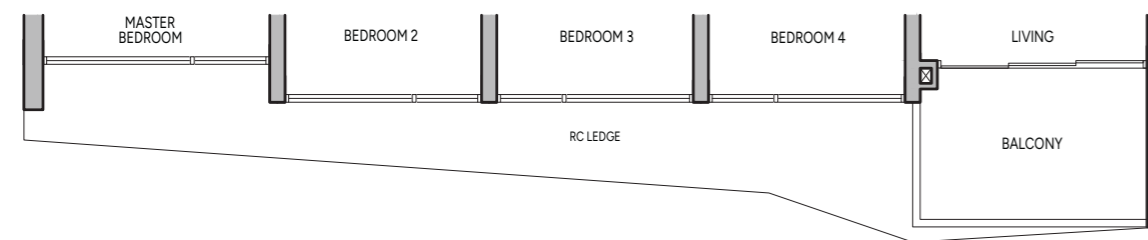
Type D2

113 sq m / 1216 sq ft

BLK 12 : #11-17 to #20-17, #31-17 to #40-17

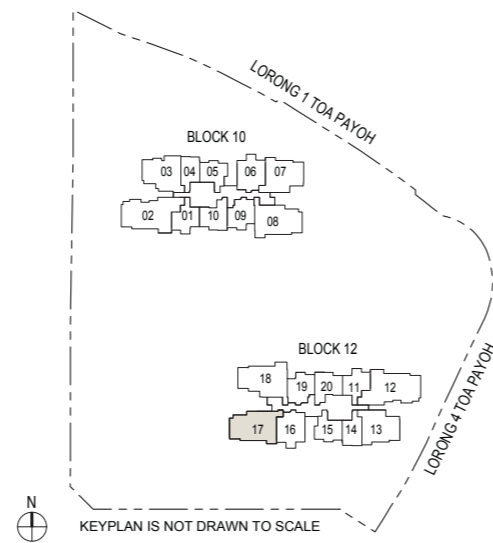


BLK 12 : #02-17 to #10-17, #21-17 to #30-17



Legend (Where Applicable)
 DB/ST - Distribution Board/Storage WD - Washer cum Dryer W/D - Washer & Dryer F - Fridge
 WC - Water Closet HS - Household Shelter RC - Reinforced Concrete AC - Air-Conditioner
 Wall not allowed to be hacked or altered

Area includes balcony where applicable and excludes among others, the RC - Reinforced Concrete Ledge and A/C - Air Conditioner Ledge. The plans are subject to change as may be required by relevant authorities. All floor plans and areas are subject to final survey. The balcony shall not be enclosed unless with the approved balcony screen, more particularly illustrated under the header "Approved Balcony Screen". Please refer to the letter containing the Particulars, Documents and Information relating to the development and the unit for the floor plan relating to the unit you intend to purchase. The Sale and Purchase Agreement contains the entire agreement between the developer and the purchaser and supersedes and cancels in all respects all previous representations, warranties, promises, inducements or statements of intention, whether written or oral made by the developer and/or the developer's agent which are not embodied in the Sale and Purchase Agreement.

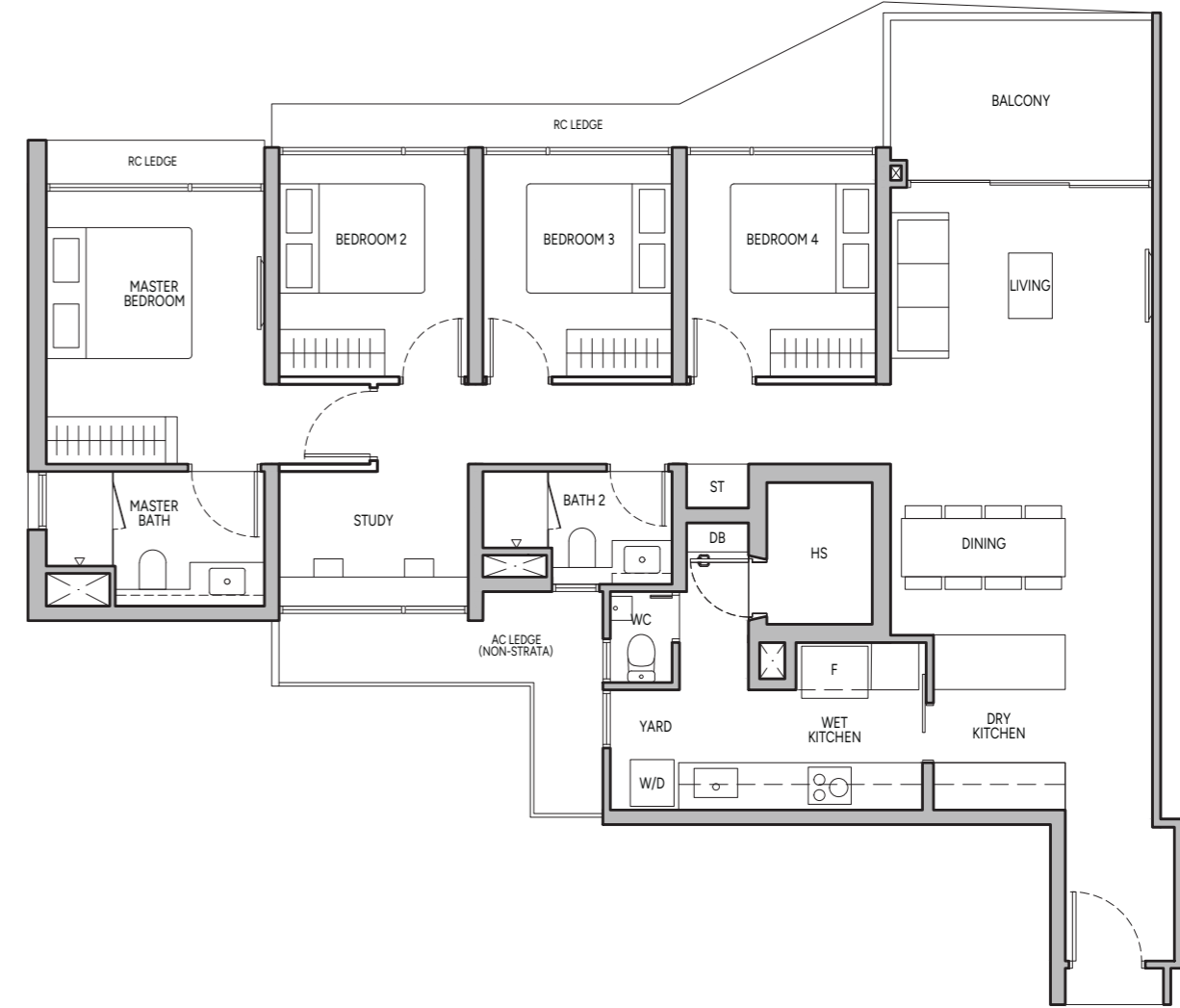


4-BEDROOM PREMIUM + STUDY

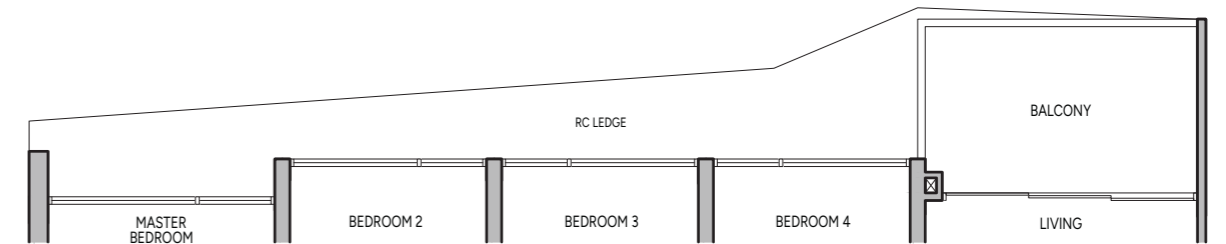
Type D3S

127 sq m / 1367 sq ft

BLK 12 : #11-18 to #20-18, #31-18 to #40-18

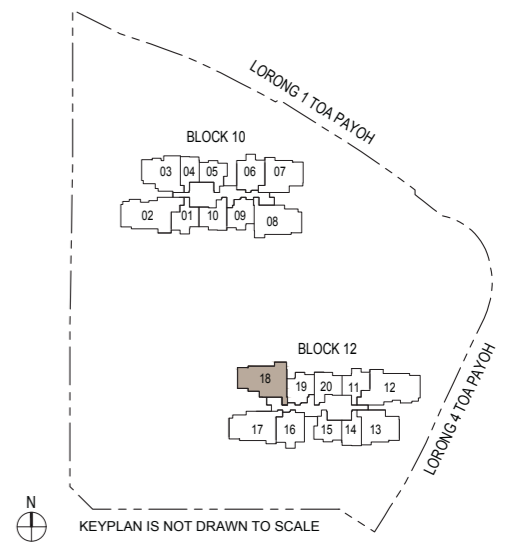


BLK 12 : #02-18 to #10-18, #21-18 to #30-18



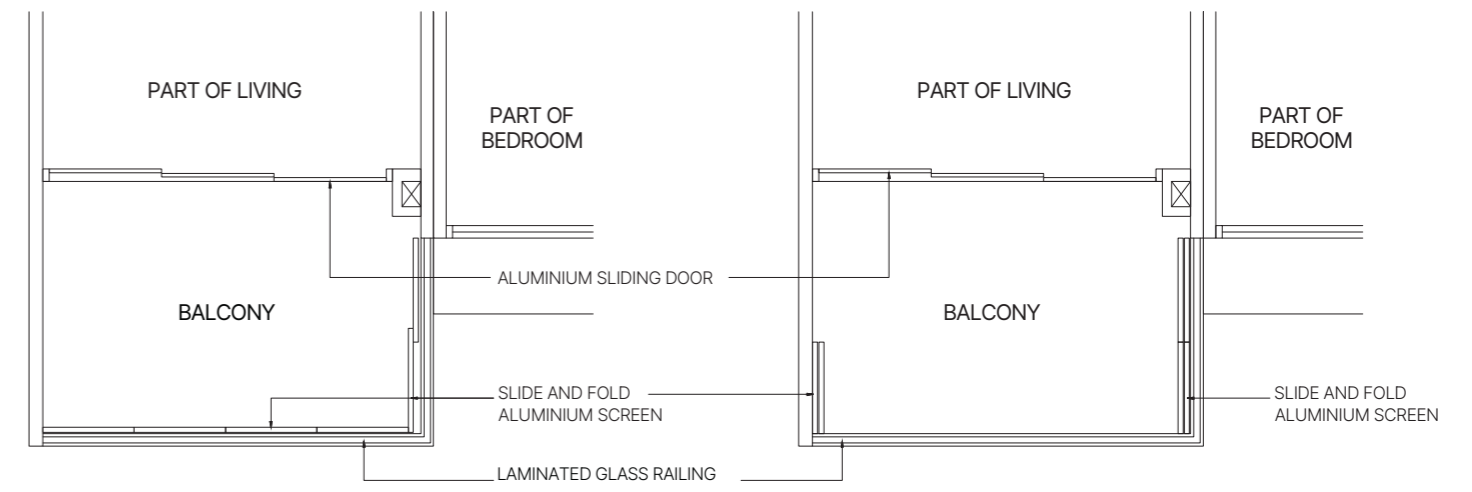
Legend (Where Applicable)
 DB/ST - Distribution Board/Storage WD - Washer cum Dryer W/D - Washer & Dryer F - Fridge
 WC - Water Closet HS - Household Shelter RC - Reinforced Concrete AC - Air-Conditioner
 Wall not allowed to be hacked or altered

Area includes balcony where applicable and excludes among others, the RC - Reinforced Concrete Ledge and A/C - Air Conditioner Ledge. The plans are subject to change as may be required by relevant authorities. All floor plans and areas are subject to final survey. The balcony shall not be enclosed unless with the approved balcony screen, more particularly illustrated under the header "Approved Balcony Screen". Please refer to the letter containing the Particulars, Documents and Information relating to the development and the unit for the floor plan relating to the unit you intend to purchase. The Sale and Purchase Agreement contains the entire agreement between the developer and the purchaser and supersedes and cancels in all respects all previous representations, warranties, promises, inducements or statements of intention, whether written or oral made by the developer and/or the developer's agent which are not embodied in the Sale and Purchase Agreement.



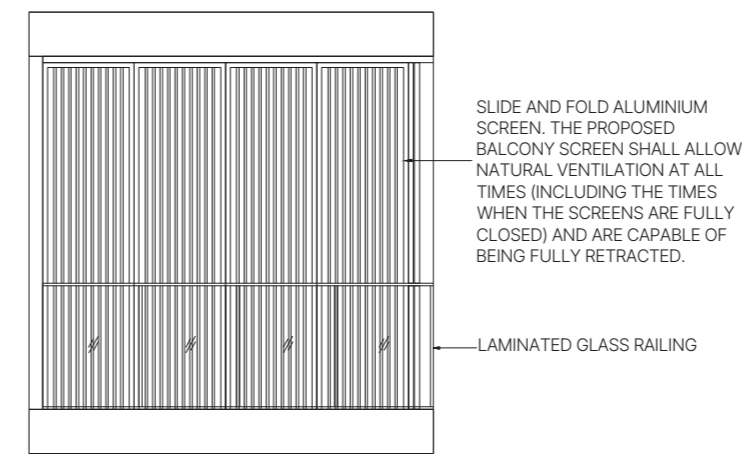
APPROVED BALCONY SCREEN

Typical Units

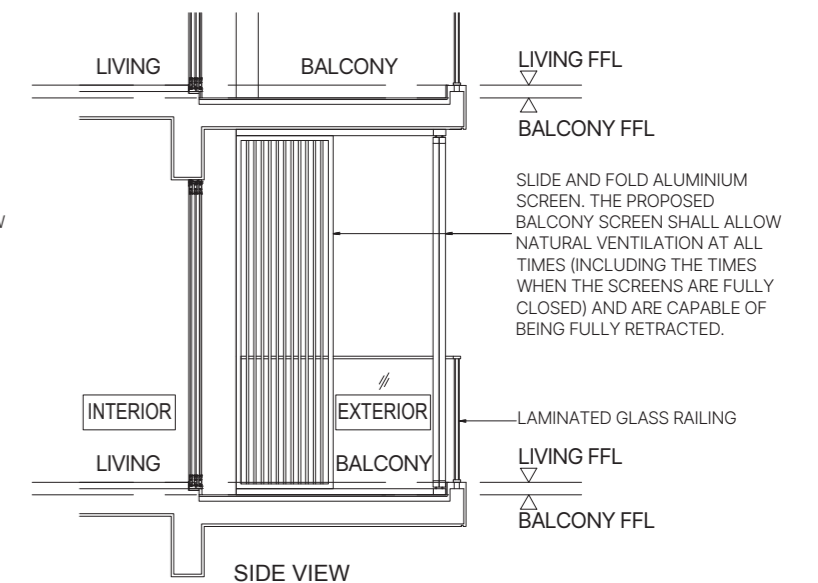


TYPICAL RETRACTABLE BALCONY SCREEN (FULLY CLOSED) - PLAN

TYPICAL RETRACTABLE BALCONY SCREEN (FULLY RETRACTED) - PLAN



FRONT VIEW



SIDE VIEW

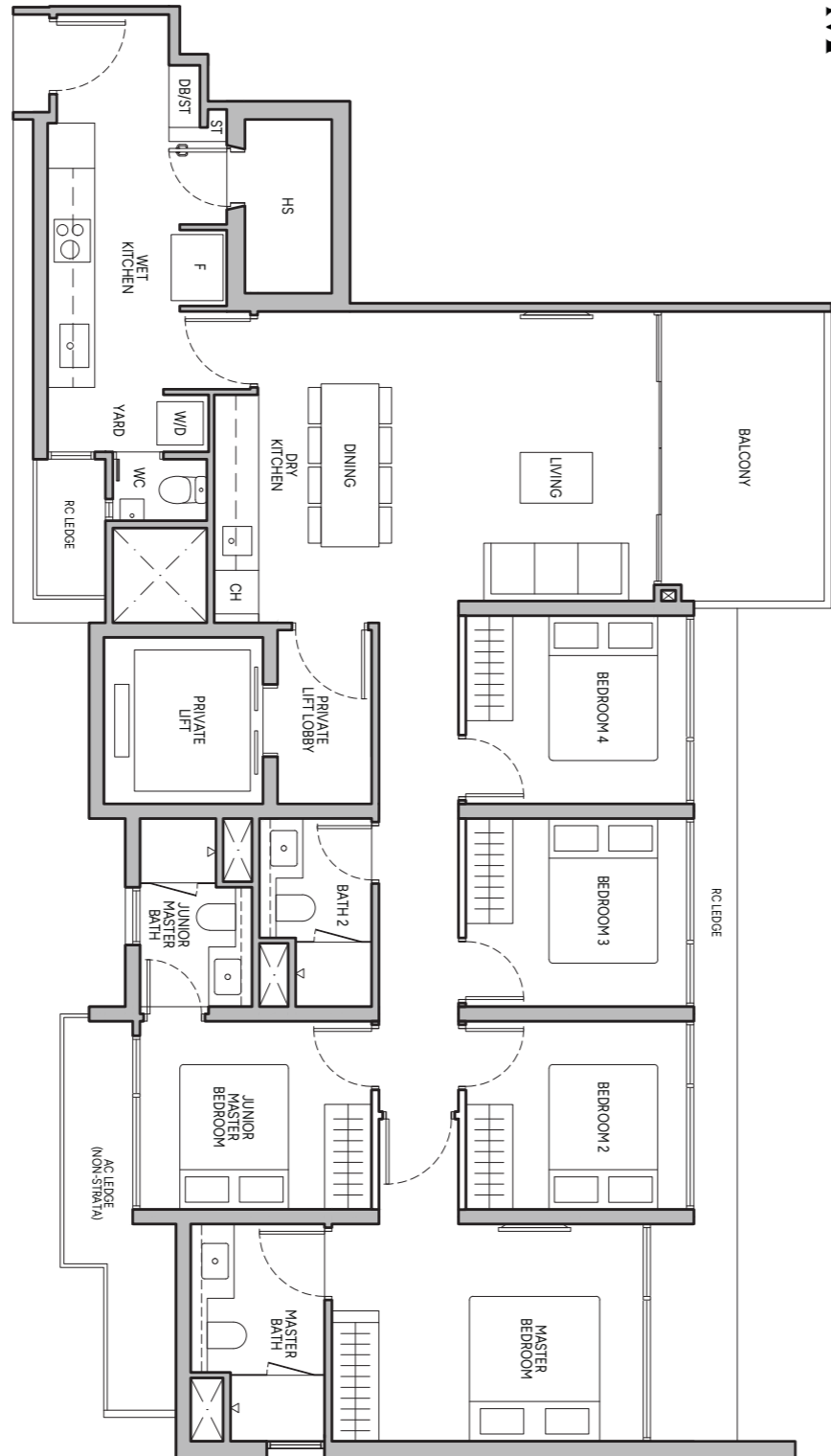
Note:
The balcony shall not be enclosed unless with the approved balcony screen as shown above.
The cost of screen and installation shall be borne by the Purchaser.
Where required to facilitate installation, the Architect reserves the right to determine appropriate details not limited to fixing details and colour tones.

5-BEDROOM

Type E1

135 sq m / 1453 sq ft

BLK 10 : #03-02 to #40-02

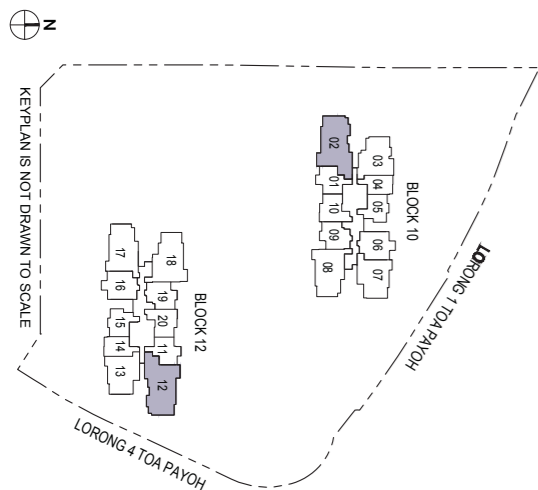
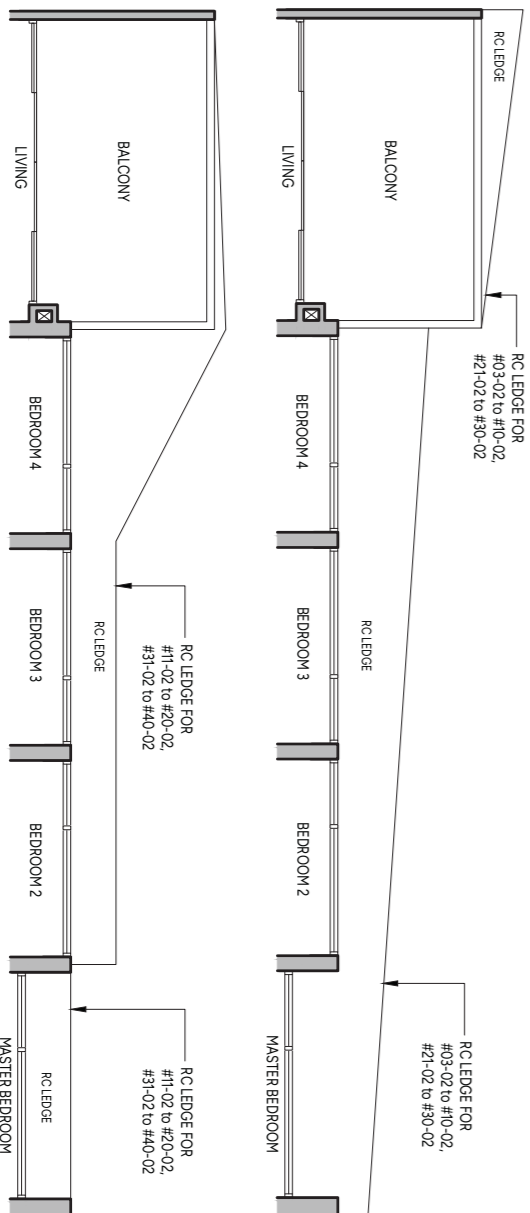


BLK 10 : #03-02 to #40-02



Legend (Where Applicable)

- DIS/ST - Distribution Board/Storage
- WD - Washer cum Dryer
- W/C - Water Closet
- HS - Household Shelter
- RC - Reinforced Concrete
- F - Fridge
- AC - Air-Conditioner
- CH - Wine Chiller



KEYPAN IS NOT DRAWN TO SCALE