

## A WELL-CONNECTED AND WELL-ROUNDED ADDRESS

Embrace a seamlessly connected lifestyle with Lorong Chuan MRT Station just a minute walk away from home. Enjoy swift and smooth access to major destinations, allowing you to explore Singapore with unparalleled ease. Less time for travelling, more time for everything that matters.



MRT



ST. GABRIEL'S PRIMARY SCHOOL



CHOMP CHOMP FOOD CENTRE



# AN ALL-ENCOMPASSING LANDSCAPE FOR ALL LIFESTYLES

## 1<sup>ST</sup> STOREY

1. FUNCTION ROOM
2. LAWN
3. RESPITE DECK
4. RESIDENTIAL COURTYARD
5. 50M LAP POOL
6. WATER LOUNGE
7. POOLSIDE CABANAS & POOLSIDE WALK
8. OASIS POOL
9. OASIS DECK
10. RECESSED LOUNGES
11. RELAXATION DECK & RELAXATION LAWN
12. OASIS COVES & OASIS JACUZZI
13. GYM
14. HYDROTHERAPY COVE
15. KIDS ADVENTURE WATER

16. POOLSIDE PAVILIONS & POOLSIDE DECK
17. BOTANICAL DECK
18. KIDS PLAYGROUND
19. KIDS CLUB
20. KIDS WADING POOL
21. TENNIS COURT
22. GARDEN PAVILION
23. ORCHARD PAVILION
24. TRANQUIL ENCLAVE
25. FOREST PAVILION
26. FOREST SERENITY
27. RIVERSIDE PAVILIONS
28. RIVERSIDE PLAZA
29. ADULT FITNESS CORNER
30. ELDERLY FITNESS CORNER

## ROOF LEVEL

36. WATER TANK

## BASEMENT 1

- A. ENTRANCE
- B. ARRIVAL COURTYARD
- C. STUDY ROOM
- D. DROP-OFF
- E. BICYCLE PARKING LOTS

- F. GUARD HOUSE
- G. PEDESTRIAN SIDE GATES
- H. ELECTRICAL SUBSTATION
- I. COMMERCIAL UNIT
- J. GENERATOR SET
- K. MAINTENANCE / SERVICE ACCESS
- L. FIRE ENGINE ACCESS
- M. COMMON LIFT TO E-DECK
- N. COMMON TOILET
- O. MANAGEMENT OFFICE
- P. OPEN PLAZA
- Q. GUARD POST
- R. BIN CENTRE

BP Approval No.: A1698-00764-2022-BP02, dated 24 September 2024

Artist's Impression

# UNIT DISTRIBUTION

242 LORONG CHUAN S556744

UNIT	01	02	03	04	05	06	07	08	09
22	B2-m-U	B2-U	C2-m-U	C2-U		B2a-m-U	C1a-U	C1-U	B1-U
21	B2-m	B2	C2-m	C2	C2a	B2a-m	C1a	C1	B1
20	B2-m	B2	C2-m	C2	C2a	B2a-m	C1a	C1	B1
19	B2-m	B2	C2-m	C2	C2a	B2a-m	C1a	C1	B1
18	B2-m	B2	C2-m	C2	C2a	B2a-m	C1a	C1	B1
17	B2-m	B2	C2-m	C2	C2a	B2a-m	C1a	C1	B1
16	B2-m	B2	C2-m	C2	C2a	B2a-m	C1a	C1	B1
15	B2-m	B2	C2-m	C2	C2a	B2a-m	C1a	C1	B1
14	B2-m	B2	C2-m	C2	C2a	B2a-m	C1a	C1	B1
13	B2-m	B2	C2-m	C2	C2a	B2a-m	C1a	C1	B1
12	B2-m	B2	C2-m	C2	C2a	B2a-m	C1a	C1	B1
11	B2-m	B2	C2-m	C2	C2a	B2a-m	C1a	C1	B1
10	B2-m	B2	C2-m	C2	C2a	B2a-m	C1a	C1	B1
9	B2-m	B2	C2-m	C2	C2a	B2a-m	C1a	C1	B1
8	B2-m	B2	C2-m	C2	C2a	B2a-m	C1a	C1	B1
7	B2-m	B2	C2-m	C2	C2a	B2a-m	C1a	C1	B1
6	B2-m	B2	C2-m	C2	C2a	B2a-m	C1a	C1	B1
5	B2-m	B2	C2-m	C2	C2a	B2a-m	C1a	C1	B1
4	B2-m	B2	C2-m	C2	C2a	B2a-m	C1a	C1	B1
3	B2-m		C2-m	C2	C2a	B2a-m	C1a	C1	B1
2	B2-m		C2-m	C2	C2a	B2a-m	C1a	C1	B1
1	B2-m-P		C2-m-P	C2-P	C2a-P	B2a-m-P	C1a-P	C1-P	B1-P

244 LORONG CHUAN S556745

UNIT	10	11	12	13	14	15	16	17	18
22	B1-m-U	C1-m-U	C1a-m-U	B2a-U		C3b-U	C3-U	B2-m-U	B2-U
21	B1-m	C1-m	C1a-m	B2a	C1b	C3b	C3	B2-m	B2
20	B1-m	C1-m	C1a-m	B2a	C1b	C3b	C3	B2-m	B2
19	B1-m	C1-m	C1a-m	B2a	C1b	C3b	C3	B2-m	B2
18	B1-m	C1-m	C1a-m	B2a	C1b	C3b	C3	B2-m	B2
17	B1-m	C1-m	C1a-m	B2a	C1b	C3b	C3	B2-m	B2
16	B1-m	C1-m	C1a-m	B2a	C1b	C3b	C3	B2-m	B2
15	B1-m	C1-m	C1a-m	B2a	C1b	C3b	C3	B2-m	B2
14	B1-m	C1-m	C1a-m	B2a	C1b	C3b	C3	B2-m	B2
13	B1-m	C1-m	C1a-m	B2a	C1b	C3b	C3	B2-m	B2
12	B1-m	C1-m	C1a-m	B2a	C1b	C3b	C3	B2-m	B2
11	B1-m	C1-m	C1a-m	B2a	C1b	C3b	C3	B2-m	B2
10	B1-m	C1-m	C1a-m	B2a	C1b	C3b	C3	B2-m	B2
9	B1-m	C1-m	C1a-m	B2a	C1b	C3b	C3	B2-m	B2
8	B1-m	C1-m	C1a-m	B2a	C1b	C3b	C3	B2-m	B2
7	B1-m	C1-m	C1a-m	B2a	C1b	C3b	C3	B2-m	B2
6	B1-m	C1-m	C1a-m	B2a	C1b	C3b	C3	B2-m	B2
5	B1-m	C1-m	C1a-m	B2a	C1b	C3b	C3	B2-m	B2
4	B1-m	C1-m	C1a-m	B2a	C1b	C3b	C3	B2-m	B2
3	B1-m	C1-m	C1a-m	B2a	C1b	C3b	C3		B2
2	B1-m	C1-m	C1a-m	B2a	C1b	C3b	C3		B2
1	B1-m-P	C1-m-P	C1a-m-P	B2a-P	C1b-P	C3b-P	C3-P		B2-P

246 LORONG CHUAN S556746

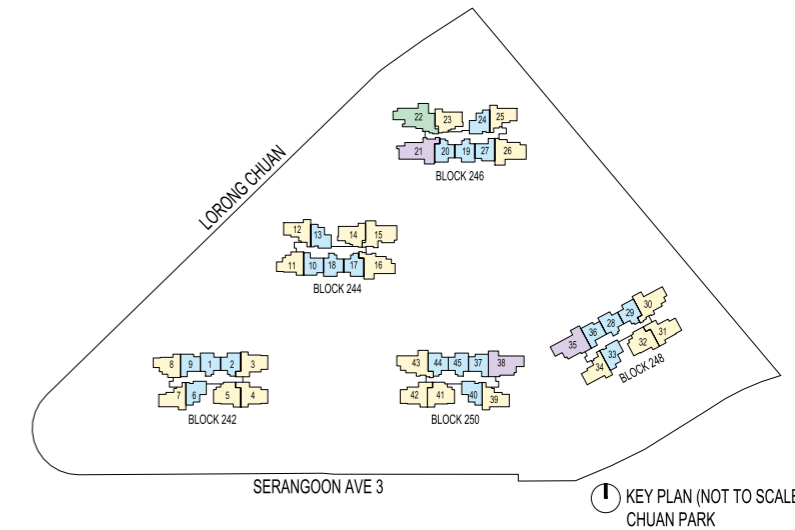
UNIT	19	20	21	22	23	24	25	26	27
22	B2-m-U	B2-U	D2-U	E1-U		B2a-m-U	C1a-U	C3a-U	B1-U
21	B2-m	B2	D2	E1	C1b-m	B2a-m	C1a	C3a	B1
20	B2-m	B2	D2	E1	C1b-m	B2a-m	C1a	C3a	B1
19	B2-m	B2	D2	E1	C1b-m	B2a-m	C1a	C3a	B1
18	B2-m	B2	D2	E1	C1b-m	B2a-m	C1a	C3a	B1
17	B2-m	B2	D2	E1	C1b-m	B2a-m	C1a	C3a	B1
16	B2-m	B2	D2	E1	C1b-m	B2a-m	C1a	C3a	B1
15	B2-m	B2	D2	E1	C1b-m	B2a-m	C1a	C3a	B1
14	B2-m	B2	D2	E1	C1b-m	B2a-m	C1a	C3a	B1
13	B2-m	B2	D2	E1	C1b-m	B2a-m	C1a	C3a	B1
12	B2-m	B2	D2	E1	C1b-m	B2a-m	C1a	C3a	B1
11	B2-m	B2	D2	E1	C1b-m	B2a-m	C1a	C3a	B1
10	B2-m	B2	D2	E1	C1b-m	B2a-m	C1a	C3a	B1
9	B2-m	B2	D2	E1	C1b-m	B2a-m	C1a	C3a	B1
8	B2-m	B2	D2	E1	C1b-m	B2a-m	C1a	C3a	B1
7	B2-m	B2	D2	E1	C1b-m	B2a-m	C1a	C3a	B1
6	B2-m	B2	D2	E1	C1b-m	B2a-m	C1a	C3a	B1
5	B2-m	B2	D2	E1	C1b-m	B2a-m	C1a	C3a	B1
4	B2-m	B2	D2	E1	C1b-m	B2a-m	C1a	C3a	B1
3	B2-m		D2	E1	C1b-m	B2a-m	C1a	C3a	B1
2	B2-m		D2	E1	C1b-m	B2a-m	C1a	C3a	B1
1	B2-m-P		D2-P	E1-P	C1b-m-P	B2a-m-P	C1a-P	C3a-P	B1-P

248 LORONG CHUAN S556747

UNIT	28	29	30	31	32	33	34	35	36
19	B2-m-U	B2-U	C3-m-U			B2a-m-U	C1a-U	D1-m-U	B1-U
18	B2-m	B2	C3-m	C2	C2a	B2a-m	C1a	D1-m	B1
17	B2-m	B2	C3-m	C2	C2a	B2a-m	C1a	D1-m	B1
16	B2-m	B2	C3-m	C2	C2a	B2a-m	C1a	D1-m	B1
15	B2-m	B2	C3-m	C2	C2a	B2a-m	C1a	D1-m	B1
14	B2-m	B2	C3-m	C2	C2a	B2a-m	C1a	D1-m	B1
13	B2-m	B2	C3-m	C2	C2a	B2a-m	C1a	D1-m	B1
12	B2-m	B2	C3-m	C2	C2a	B2a-m	C1a	D1-m	B1
11	B2-m	B2	C3-m	C2	C2a	B2a-m	C1a	D1-m	B1
10	B2-m	B2	C3-m	C2	C2a	B2a-m	C1a	D1-m	B1
9	B2-m	B2	C3-m	C2	C2a	B2a-m	C1a	D1-m	B1
8	B2-m	B2	C3-m	C2	C2a	B2a-m	C1a	D1-m	B1
7	B2-m	B2	C3-m	C2	C2a	B2a-m	C1a	D1-m	B1
6	B2-m	B2	C3-m	C2	C2a	B2a-m	C1a	D1-m	B1
5	B2-m	B2	C3-m	C2	C2a	B2a-m	C1a	D1-m	B1
4	B2-m	B2	C3-m	C2	C2a	B2a-m	C1a	D1-m	B1
3	B2-m	B2	C3-m	C2	C2a	B2a-m	C1a	D1-m	B1
2	B2-m		C3-m	C2	C2a	B2a-m	C1a	D1-m	B1
1	B2-m-P		C3-m-P	C2-P	C2a-P	B2a-m-P	C1a-P	D1-m-P	B1-P

250 LORONG CHUAN S556748

UNIT	37	38	39	40	41	42	43	44	45
19	B1-m-U	D1-U	C1a-m-U	B2a-U			C3-U	B2-m-U	B2-U
18	B1-m	D1	C1a-m	B2a	C2a-m	C2-m	C3	B2-m	B2
17	B1-m	D1	C1a-m	B2a	C2a-m	C2-m	C3	B2-m	B2
16	B1-m	D1	C1a-m	B2a	C2a-m	C2-m	C3	B2-m	B2
15	B1-m	D1	C1a-m	B2a	C2a-m	C2-m	C3	B2-m	B2
14	B1-m	D1	C1a-m	B2a	C2a-m	C2-m	C3	B2-m	B2
13	B1-m	D1	C1a-m	B2a	C2a-m	C2-m	C3	B2-m	B2
12	B1-m	D1	C1a-m	B2a	C2a-m	C2-m	C3	B2-m	B2
11	B1-m	D1	C1a-m	B2a	C2a-m	C2-m	C3	B2-m	B2
10	B1-m	D1	C1a-m	B2a	C2a-m	C2-m	C3	B2-m	B2
9	B1-m	D1	C1a-m	B2a	C2a-m	C2-m	C3	B2-m	B2
8	B1-m	D1	C1a-m	B2a	C2a-m	C2-m	C3	B2-m	B2
7	B1-m	D1	C1a-m	B2a	C2a-m	C2-m	C3	B2-m	B2
6	B1-m	D1	C1a-m	B2a	C2a-m	C2-m	C3	B2-m	B2
5	B1-m	D1	C1a-m	B2a	C2a-m	C2-m	C3	B2-m	B2
4	B1-m	D1	C1a-m	B2a	C2a-m	C2-m	C3	B2-m	B2
3	B1-m	D1	C1a-m	B2a	C2a-m	C2-m	C3	B2-m	B2
2	B1-m	D1	C1a-m	B2a	C2a-m	C2-m	C3		B2
1	B1-m-P	D1-P	C1a-m-P	B2a-P	C2a-m-P	C2-m-P	C3-P		B2-P



- LEGEND:
- 2-BEDROOM
  - 3-BEDROOM
  - 4-BEDROOM
  - 5-BEDROOM



REVEL IN  
REFINED  
STYLE

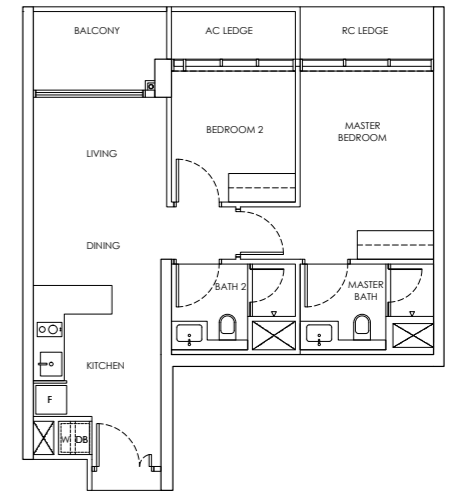
For Illustration Purposes

## 2-BEDROOM

### Type B1 / B1-m

Area: 65 sqm

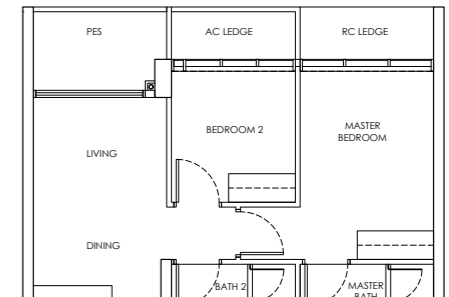
Blk 242 #02-09 to #21-09  
Blk 246 #02-27 to #21-27  
Blk 248 #02-36 to #18-36  
Blk 244 #02-10 to #21-10\* (Mirror)  
Blk 250 #02-37 to #18-37\* (Mirror)



### Type B1-P / B1-m-P

Area: 65 sqm

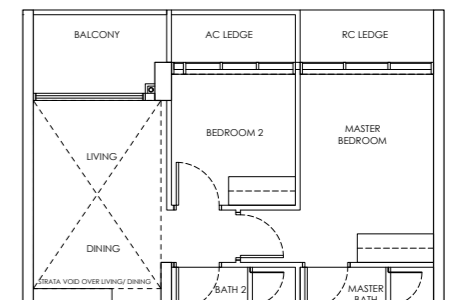
Blk 242 #01-09  
Blk 246 #01-27  
Blk 248 #01-36  
Blk 244 #01-10\* (Mirror)  
Blk 250 #01-37\* (Mirror)



### Type B1-U / B1-m-U

Area: 77 sqm

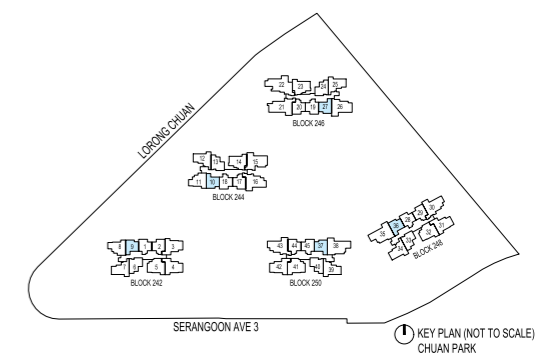
Blk 242 #22-09  
Blk 246 #22-27  
Blk 248 #19-36  
Blk 244 #22-10\* (Mirror)  
Blk 250 #19-37\* (Mirror)



#### LEGEND

- DB: Distribution Board
- AC LEDGE: Air-Conditioner Ledge
- F: Fridge
- W: Washer cum dryer machine
- ⊠: Non-Strata Area (Void)

Area includes AC ledge, balcony/ PES and Strata Void over Living/ Dining space.  
RC ledge and non- strata void are excluded from the strata area

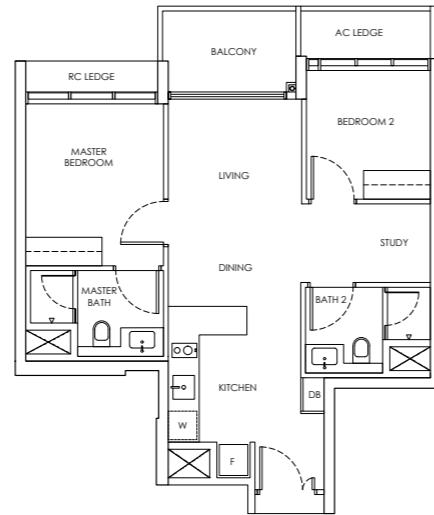


# 2-BEDROOM + STUDY

## Type B2 / B2-m

Area: 68 sqm

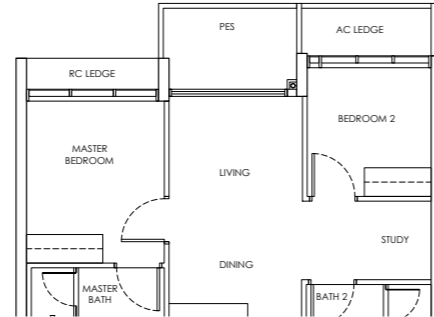
- Blk 242 #04-02 to #21-02
- Blk 244 #02-18 to #21-18
- Blk 246 #04-20 to #21-20
- Blk 248 #03-29 to #18-29
- Blk 250 #02-45 to #18-45
- Blk 242 #02-01 to #21-01\* (Mirror)
- Blk 244 #04-17 to #21-17\* (Mirror)
- Blk 246 #02-19 to #21-19\* (Mirror)
- Blk 248 #02-28 to #18-28\* (Mirror)
- Blk 250 #03-44 to #18-44\* (Mirror)



## Type B2-P / B2-m-P

Area: 68 sqm

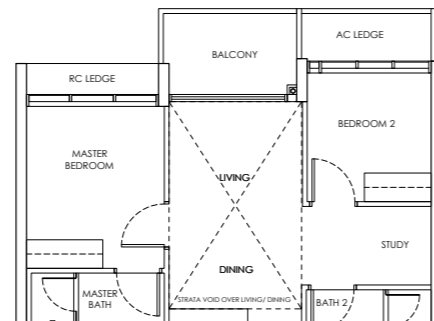
- Blk 244 #01-18
- Blk 250 #01-45
- Blk 242 #01-01\* (Mirror)
- Blk 246 #01-19\* (Mirror)
- Blk 248 #01-28\* (Mirror)



## Type B2-U / B2-m-U

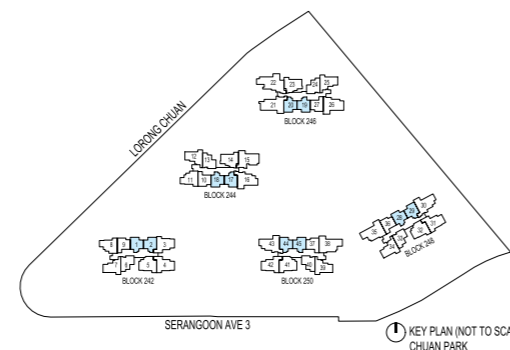
Area: 81 sqm

- Blk 242 #22-02
- Blk 244 #22-18
- Blk 246 #22-20
- Blk 248 #19-29
- Blk 250 #19-45
- Blk 242 #22-01\* (Mirror)
- Blk 244 #22-17\* (Mirror)
- Blk 246 #22-19\* (Mirror)
- Blk 248 #19-28\* (Mirror)
- Blk 250 #19-44\* (Mirror)



- LEGEND
- DB: Distribution Board
  - AC LEDGE: Air-Conditioner Ledge
  - F: Fridge
  - W: Washer cum dryer machine
  - ⊠: Non-Strata Area (Void)

Area includes AC ledge, balcony/ PES and Strata Void over Living/ Dining space. RC ledge and non- strata void are excluded from the strata area

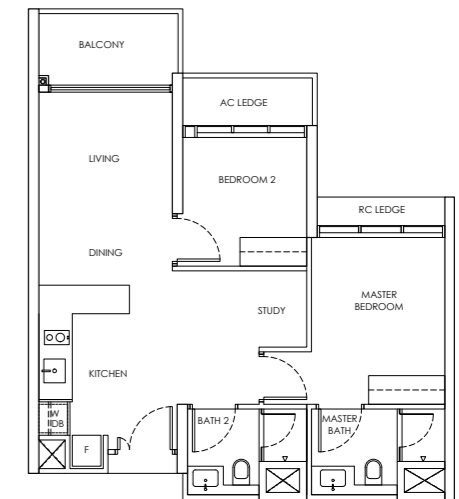


# 2-BEDROOM + STUDY

## Type B2a / B2a-m

Area: 69 sqm

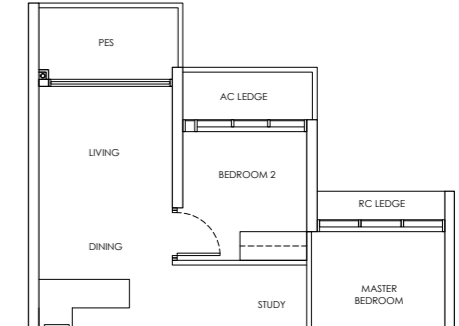
- Blk 244 #02-13 to #21-13
- Blk 250 #02-40 to #18-40
- Blk 242 #02-06 to #21-06\* (Mirror)
- Blk 246 #02-24 to #21-24\* (Mirror)
- Blk 248 #02-33 to #18-33\* (Mirror)



## Type B2a-P / B2a-m-P

Area: 69 sqm

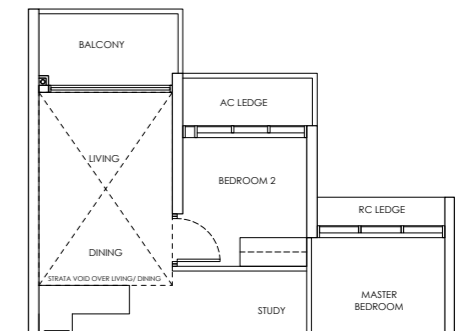
- Blk 244 #01-13
- Blk 250 #01-40
- Blk 242 #01-06\* (Mirror)
- Blk 246 #01-24\* (Mirror)
- Blk 248 #01-33\* (Mirror)



## Type B2a-U / B2a-m-U

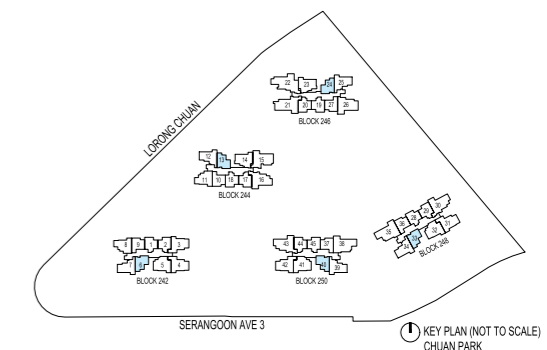
Area: 82 sqm

- Blk 244 #22-13
- Blk 250 #19-40
- Blk 242 #22-06\* (Mirror)
- Blk 246 #22-24\* (Mirror)
- Blk 248 #19-33\* (Mirror)



- LEGEND
- DB: Distribution Board
  - AC LEDGE: Air-Conditioner Ledge
  - F: Fridge
  - W: Washer cum dryer machine
  - ⊠: Non-Strata Area (Void)

Area includes AC ledge, balcony/ PES and Strata Void over Living/ Dining space. RC ledge and non- strata void are excluded from the strata area



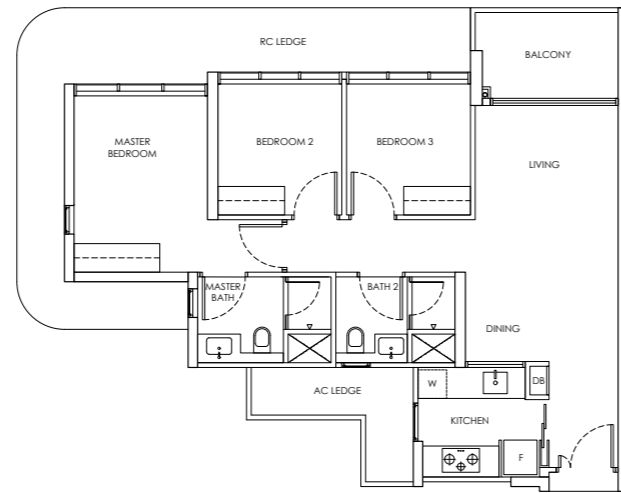
# 3-BEDROOM

## Type C1 / C1-m

Area: 85 sqm

Blk 242 #02-08 to #21-08

Blk 244 #02-11 to #21-11\* (Mirror)

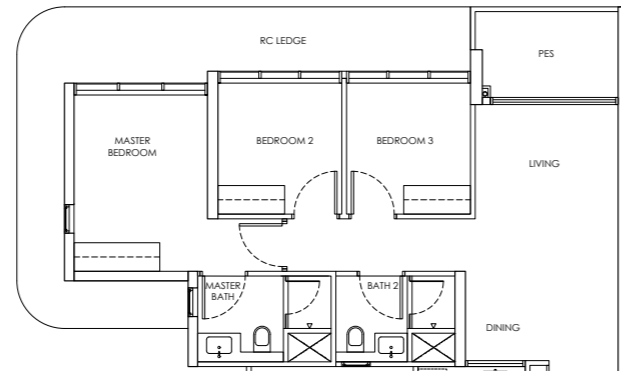


## Type C1-P / C1-m-P

Area: 85 sqm

Blk 242 #01-08

Blk 244 #01-11\* (Mirror)

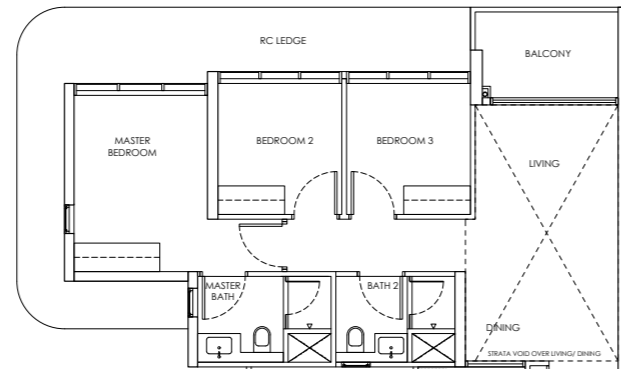


## Type C1-U / C1-m-U

Area: 103 sqm

Blk 242 #22-08

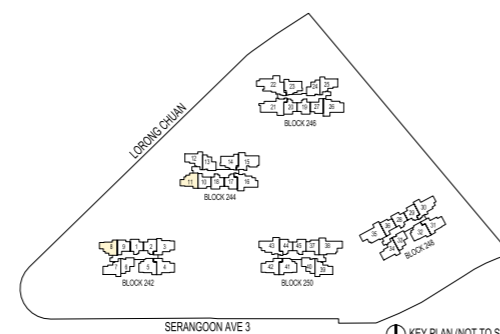
Blk 244 #22-11\* (Mirror)



### LEGEND

- DB: Distribution Board
- AC LEDGE: Air-Conditioner Ledge
- F: Fridge
- W: Washer cum dryer machine
- ⊠: Non-Strata Area (Void)

Area includes AC ledge, balcony/ PES and Strata Void over Living/ Dining space.  
RC ledge and non- strata void are excluded from the strata area



KEY PLAN (NOT TO SCALE)  
CHUAN PARK

# 3-BEDROOM

## Type C1a / C1a-m

Area: 87 sqm

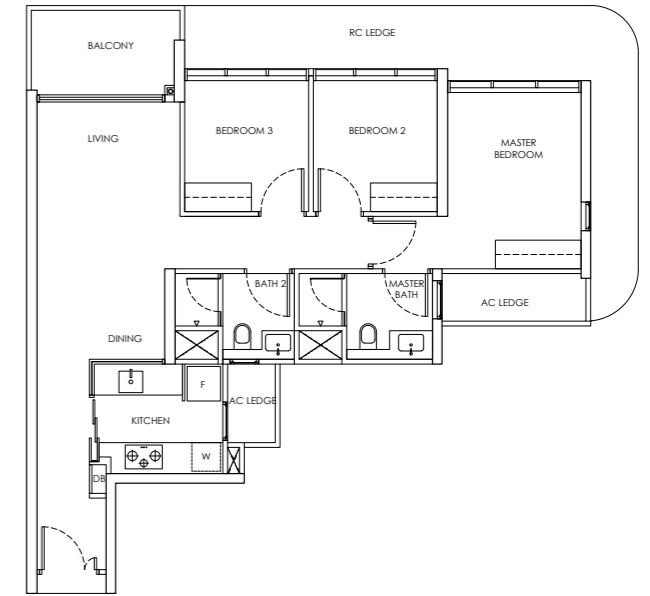
Blk 242 #02-07 to #21-07

Blk 246 #02-25 to #21-25

Blk 248 #02-34 to #18-34

Blk 244 #02-12 to #21-12\* (Mirror)

Blk 250 #02-39 to #18-39\* (Mirror)



## Type C1a-P / C1a-m-P

Area: 87 sqm

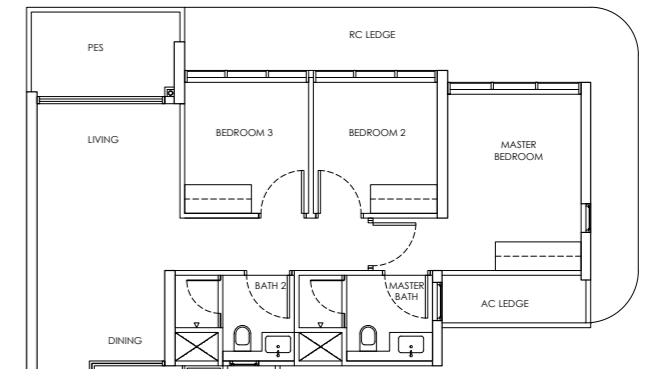
Blk 242 #01-07

Blk 246 #01-25

Blk 248 #01-34

Blk 244 #01-12\* (Mirror)

Blk 250 #01-39\* (Mirror)



## Type C1a-U / C1a-m-U

Area: 104 sqm

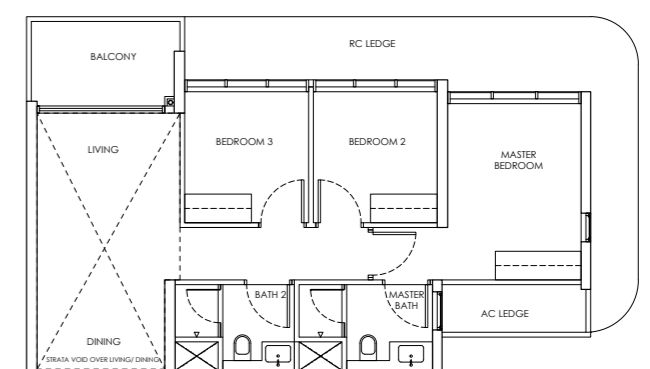
Blk 242 #22-07

Blk 246 #22-25

Blk 248 #19-34

Blk 244 #22-12\* (Mirror)

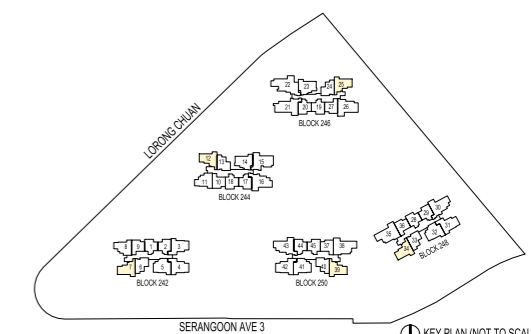
Blk 250 #19-39\* (Mirror)



### LEGEND

- DB: Distribution Board
- AC LEDGE: Air-Conditioner Ledge
- F: Fridge
- W: Washer cum dryer machine
- ⊠: Non-Strata Area (Void)

Area includes AC ledge, balcony/ PES and Strata Void over Living/ Dining space.  
RC ledge and non- strata void are excluded from the strata area



KEY PLAN (NOT TO SCALE)  
CHUAN PARK

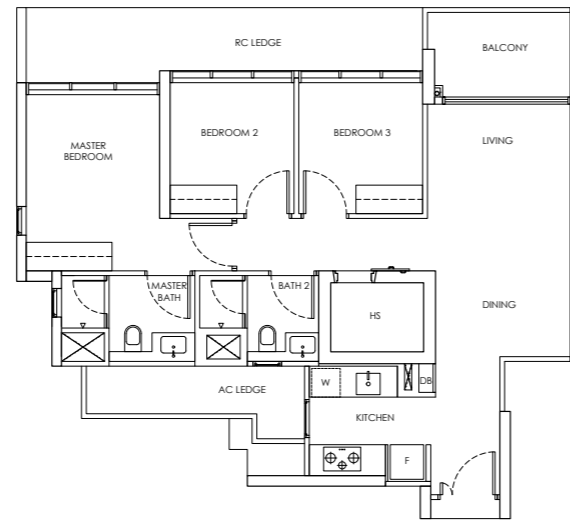
# 3-BEDROOM

## Type C1b / C1b-m

Area: 89 sqm

Blk 244 #02-14 to #21-14

Blk 246 #02-23 to #21-23\* (Mirror)

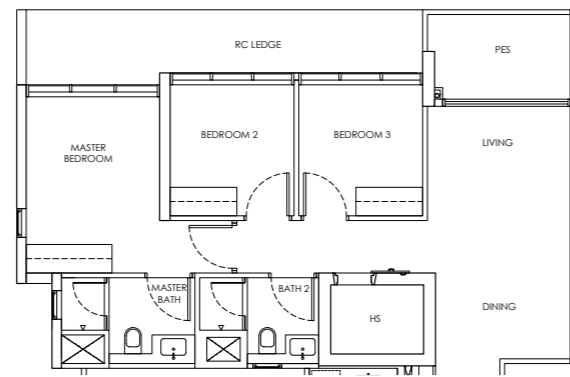


## Type C1b-P / C1b-m-P

Area: 89 sqm

Blk 244 #01-14

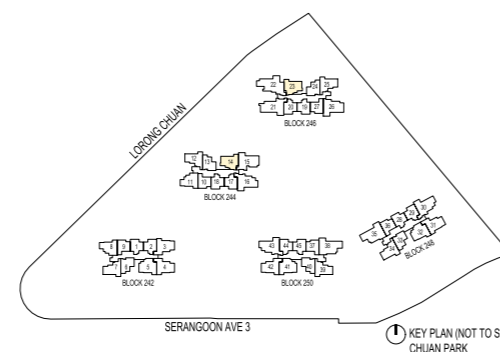
Blk 246 #01-23\* (Mirror)



### LEGEND

- DB: Distribution Board
- AC LEDGE: Air-Conditioner Ledge
- F: Fridge
- W: Washer cum dryer machine
- ⊠: Non-Strata Area (Void)

Area includes AC ledge, balcony/ PES and Strata Void over Living/ Dining space.  
RC ledge and non- strata void are excluded from the strata area



# 3-BEDROOM

## Type C2 / C2-M

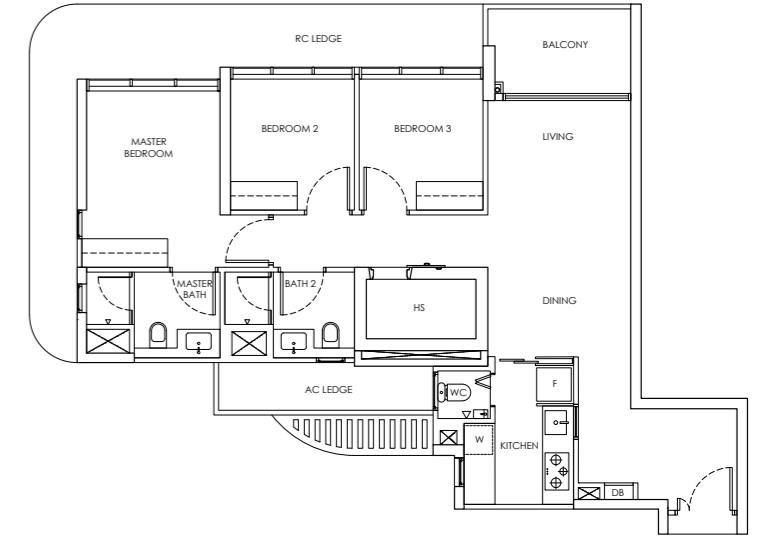
Area: 95 sqm

Blk 242 #02-04 to #21-04

Blk 248 #02-31 to #18-31

Blk 242 #02-03 to #21-03\* (Mirror)

Blk 250 #02-42 to #18-42\* (Mirror)



## Type C2-P / C2-m-P

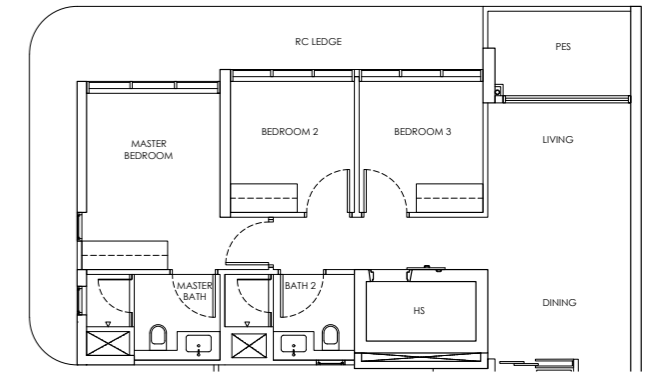
Area: 95 sqm

Blk 242 #01-04

Blk 248 #01-31

Blk 242 #01-03\* (Mirror)

Blk 250 #01-42\* (Mirror)

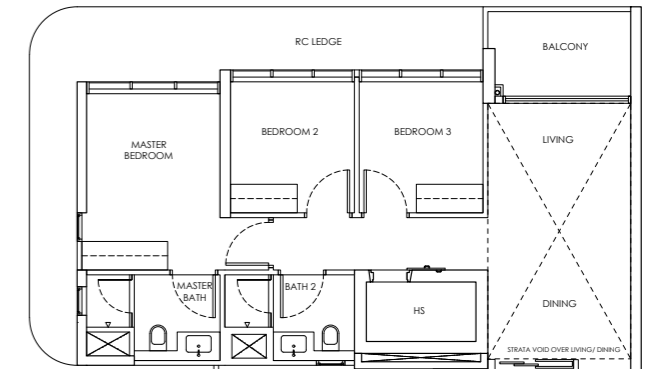


## Type C2-U / C2-m-U

Area: 112 sqm

Blk 242 #22-04

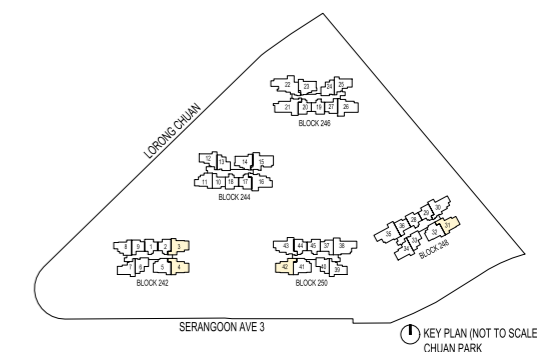
Blk 242 #22-03\* (Mirror)



### LEGEND

- DB: Distribution Board
- AC LEDGE: Air-Conditioner Ledge
- F: Fridge
- W: Washer cum dryer machine
- ⊠: Non-Strata Area (Void)

Area includes AC ledge, balcony/ PES and Strata Void over Living/ Dining space.  
RC ledge and non- strata void are excluded from the strata area



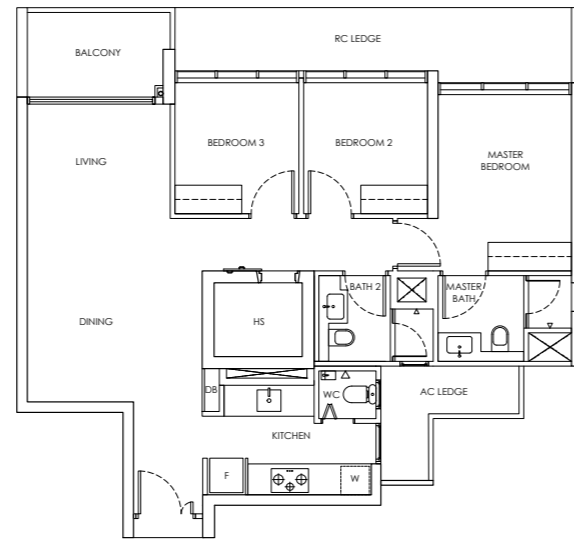


# 3-BEDROOM

## Type C2a / C2a-m

Area: 96 sqm

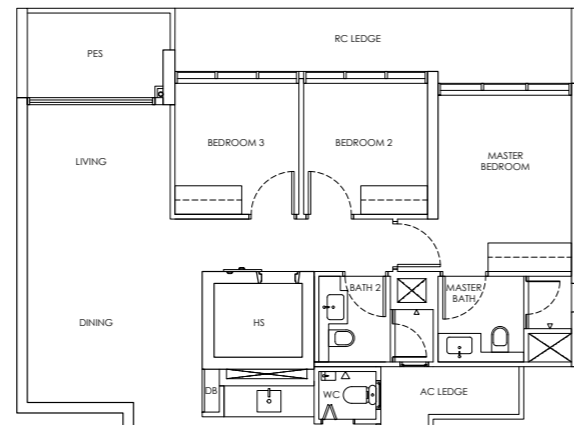
Blk 242 #02-05 to #21-05  
Blk 248 #02-32 to #18-32  
Blk 250 #02-41 to #18-41\* (Mirror)



## Type C2a-P / C2a-m-P

Area: 96 sqm

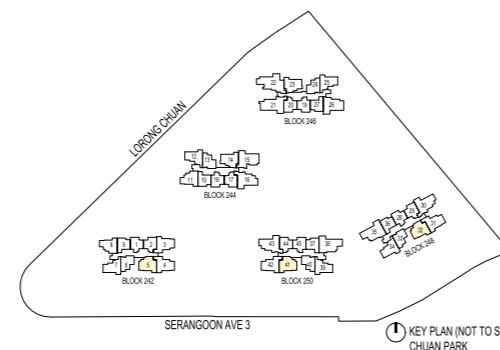
Blk 242 #01-05  
Blk 248 #01-32  
Blk 250 #01-41\* (Mirror)



### LEGEND

- DB: Distribution Board
- AC LEDGE: Air-Conditioner Ledge
- F: Fridge
- W: Washer cum dryer machine
- ⊠: Non-Strata Area (Void)

Area includes AC ledge, balcony/ PES and Strata Void over Living/ Dining space.  
RC ledge and non-strata void are excluded from the strata area

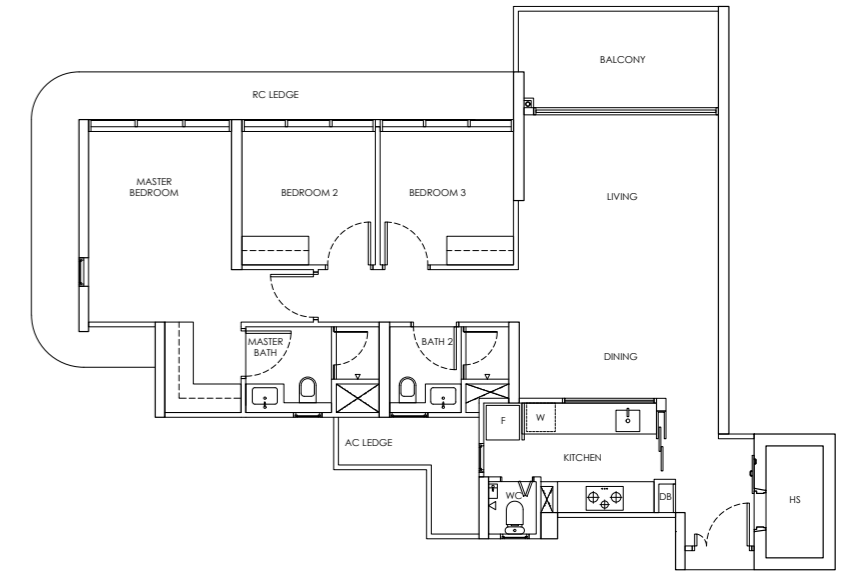


# 3-BEDROOM

## Type C3 / C3-m

Area: 112 sqm

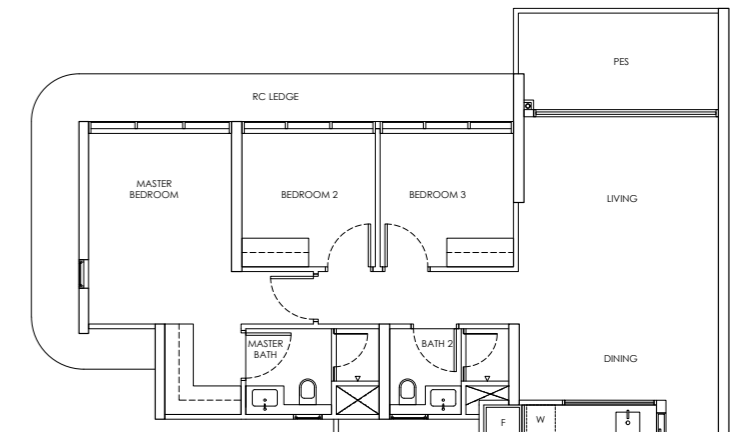
Blk 244 #02-16 to #21-16  
Blk 250 #02-43 to #18-43  
Blk 248 #02-30 to #18-30\* (Mirror)



## Type C3-P / C3-m-P

Area: 112 sqm

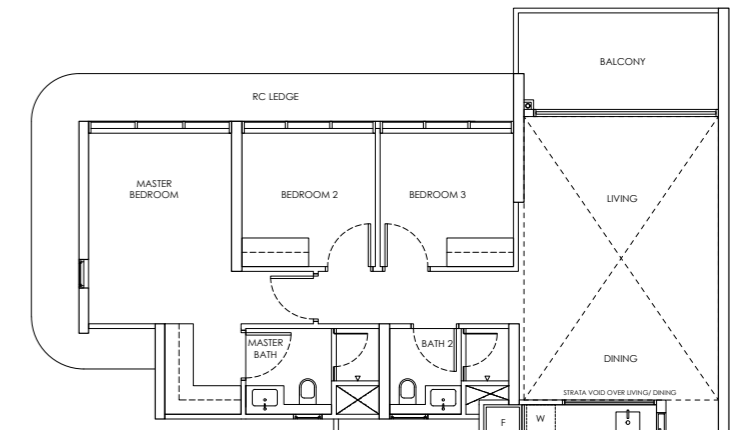
Blk 244 #01-16  
Blk 250 #01-43  
Blk 248 #01-30\* (Mirror)



## Type C3-U / C3-m-U

Area: 138 sqm

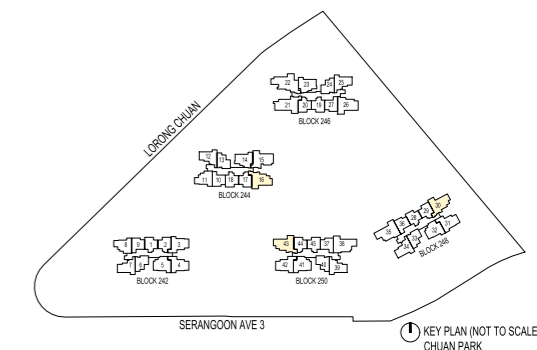
Blk 244 #22-16  
Blk 250 #19-43  
Blk 248 #19-30\* (Mirror)



### LEGEND

- DB: Distribution Board
- AC LEDGE: Air-Conditioner Ledge
- F: Fridge
- W: Washer cum dryer machine
- ⊠: Non-Strata Area (Void)

Area includes AC ledge, balcony/ PES and Strata Void over Living/ Dining space.  
RC ledge and non-strata void are excluded from the strata area

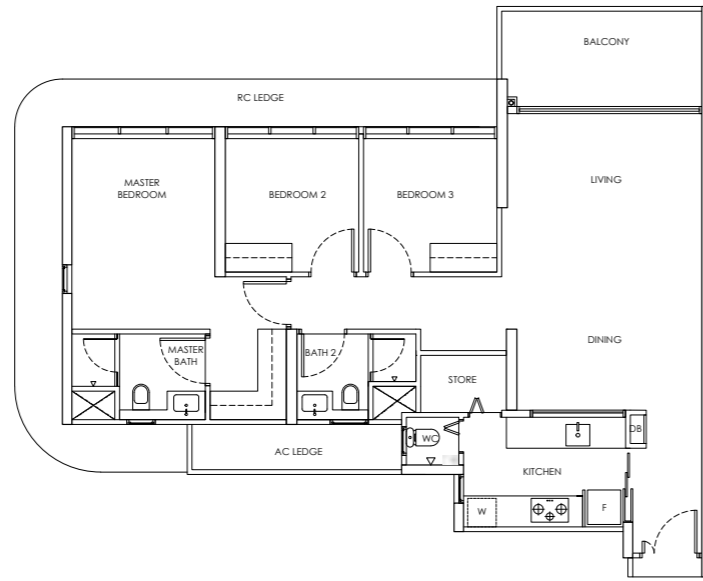


# 3-BEDROOM

## Type C3a

Area: 112 sqm

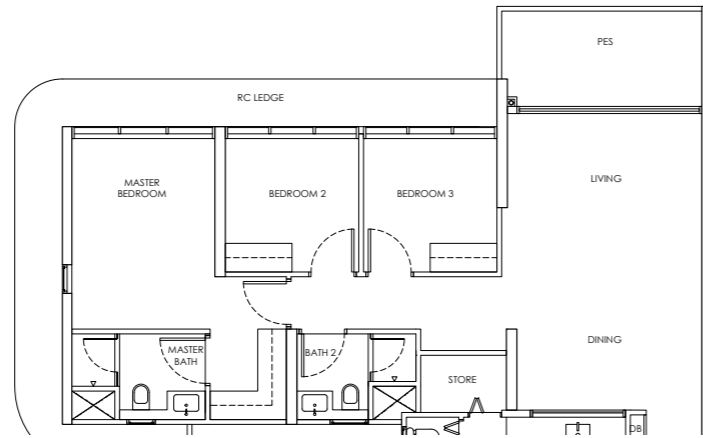
Blk 246 #02-26 to #21-26



## Type C3a-P

Area: 112 sqm

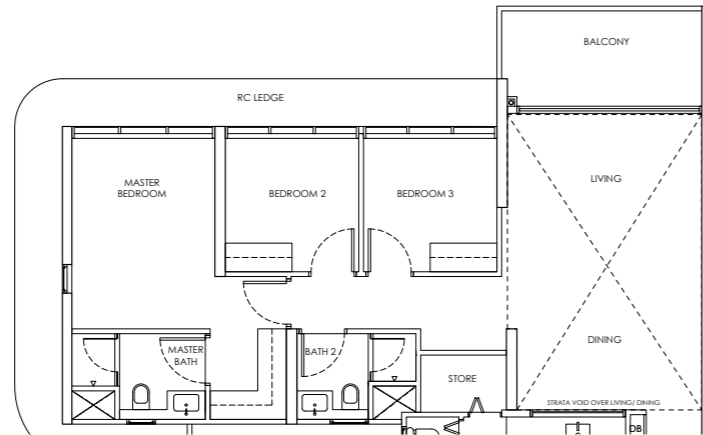
Blk 246 #01-26



## Type C3a-U

Area: 139 sqm

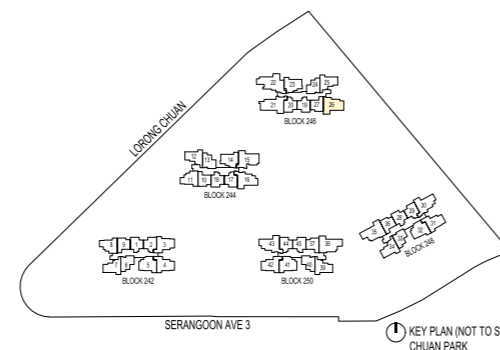
Blk 246 #22-26



### LEGEND

- DB: Distribution Board
- AC LEDGE: Air-Conditioner Ledge
- F: Fridge
- W: Washer cum dryer machine
- ⊠: Non-Strata Area (Void)

Area includes AC ledge, balcony/ PES and Strata Void over Living/ Dining space.  
RC ledge and non- strata void are excluded from the strata area



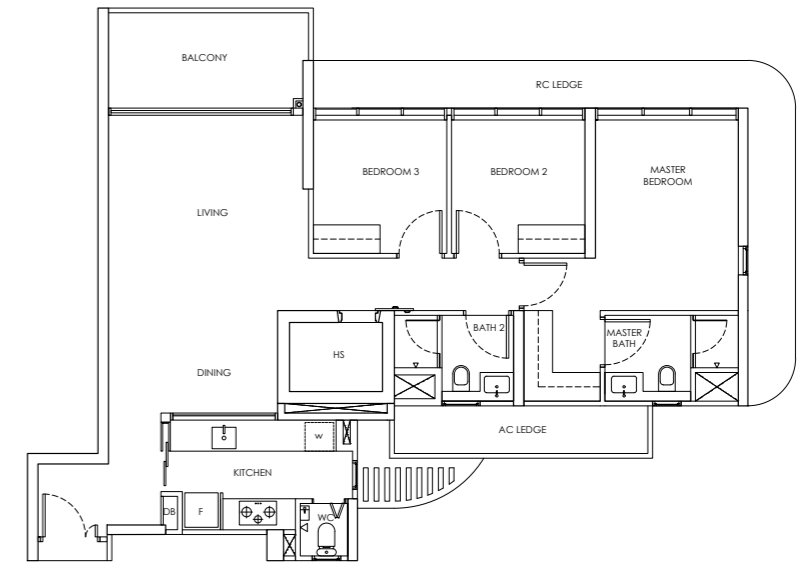
KEY PLAN (NOT TO SCALE)  
CHUAN PARK

# 3-BEDROOM

## Type C3b

Area: 114 sqm

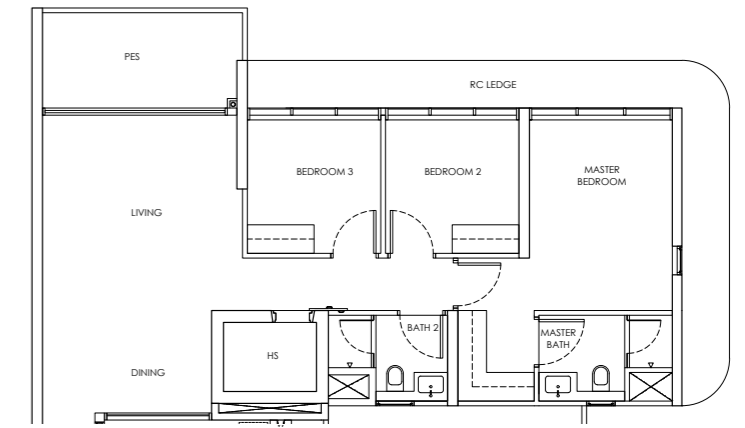
Blk 244 #02-15 to #21-15



## Type C3b-P

Area: 114 sqm

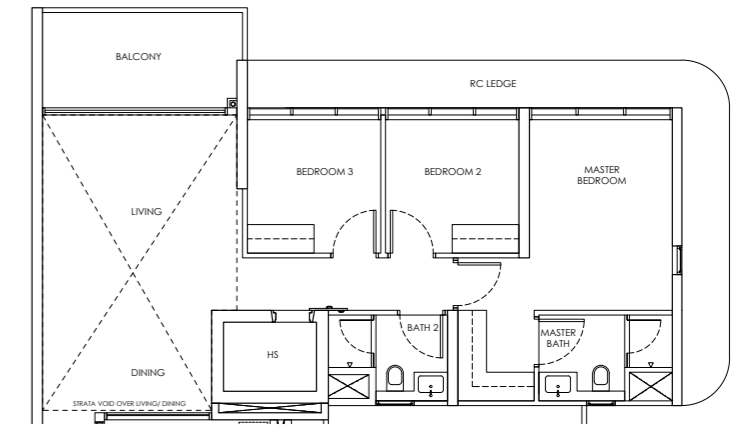
Blk 244 #01-15



## Type C3b-U

Area: 140 sqm

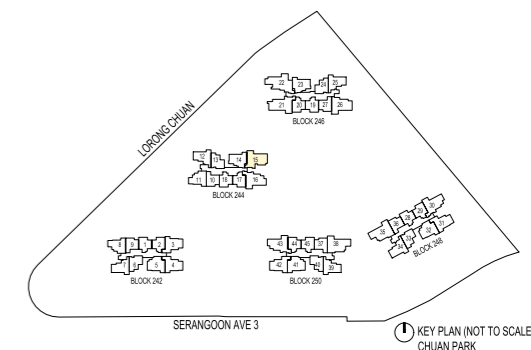
Blk 244 #22-15



### LEGEND

- DB: Distribution Board
- AC LEDGE: Air-Conditioner Ledge
- F: Fridge
- W: Washer cum dryer machine
- ⊠: Non-Strata Area (Void)

Area includes AC ledge, balcony/ PES and Strata Void over Living/ Dining space.  
RC ledge and non- strata void are excluded from the strata area

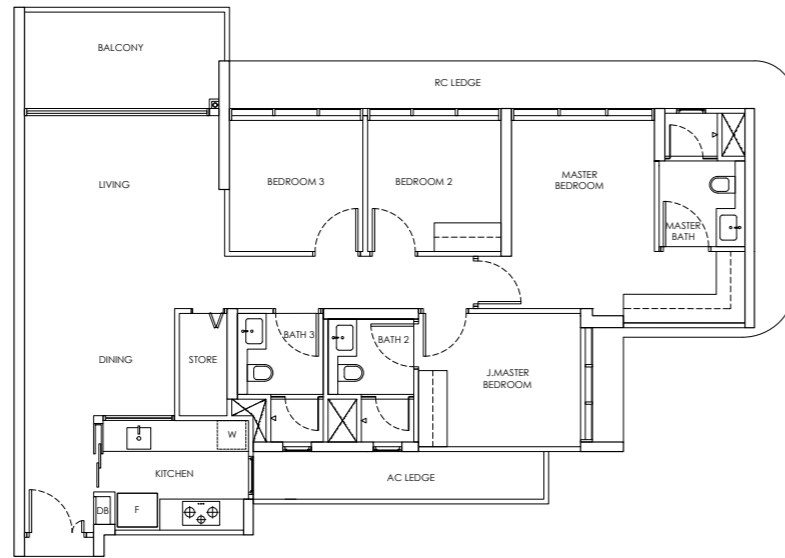


KEY PLAN (NOT TO SCALE)  
CHUAN PARK

# 4-BEDROOM

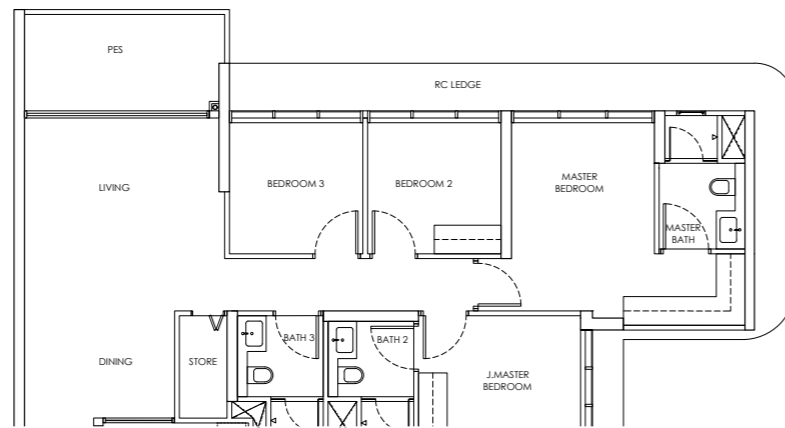
## Type D1 / D1-m

Area: 124 sqm  
 Blk 250 #02-38 to #18-38  
 Blk 248 #02-35 to #18-35\* (Mirror)



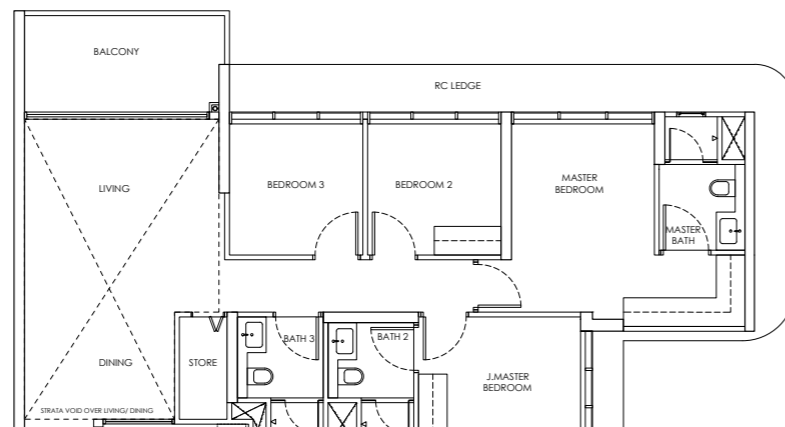
## Type D1-P / D1-m-P

Area: 124 sqm  
 Blk 250 #01-38  
 Blk 248 #01-35\* (Mirror)



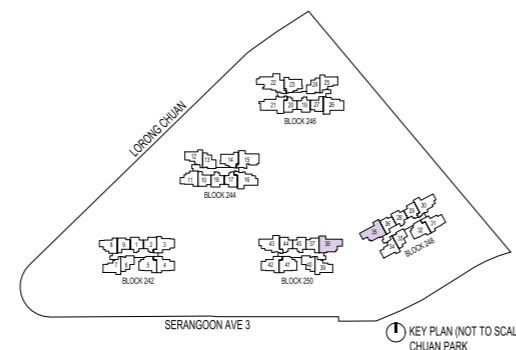
## Type D1-U / D1-m-U

Area: 150 sqm  
 Blk 250 #19-38  
 Blk 248 #19-35\* (Mirror)



- LEGEND
- DB: Distribution Board
  - AC LEDGE: Air-Conditioner Ledge
  - F: Fridge
  - W: Washer cum dryer machine
  - ⊠: Non-Strata Area (Void)

Area includes AC ledge, balcony/ PES and Strata Void over Living/ Dining space.  
 RC ledge and non- strata void are excluded from the strata area

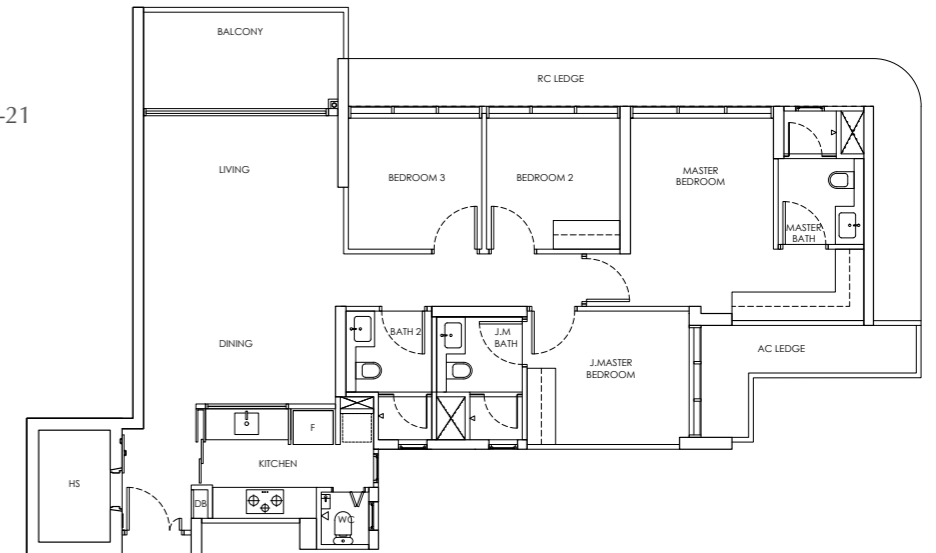


KEY PLAN (NOT TO SCALE)  
 CHUAN PARK

# 4-BEDROOM

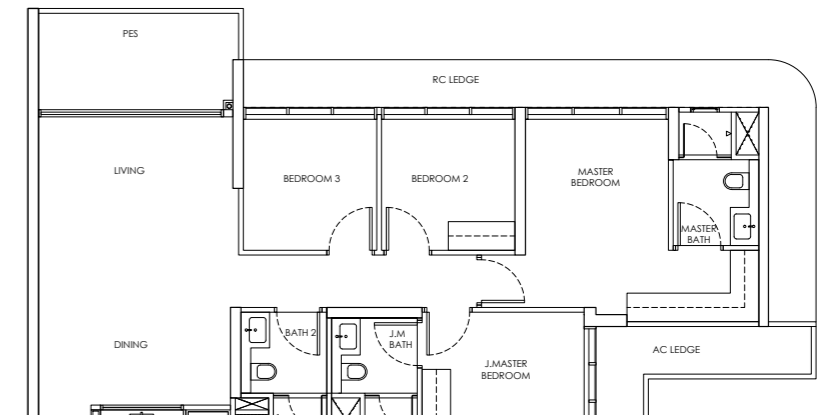
## Type D2

Area: 129 sqm  
 Blk 246 #02-21 to #21-21



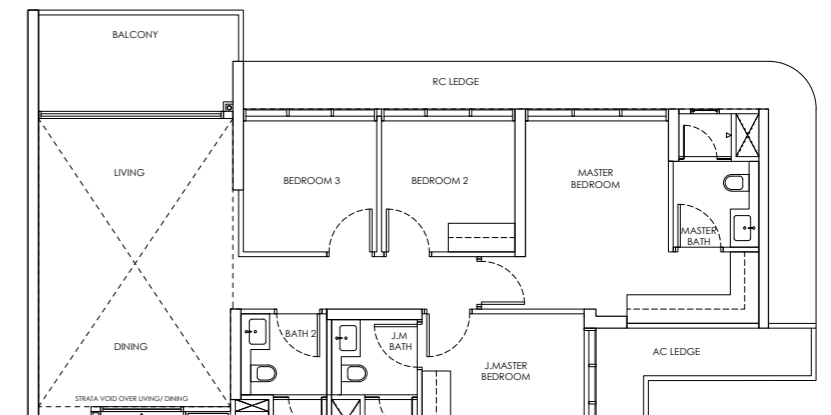
## Type D2-P

Area: 129 sqm  
 Blk 246 #01-21



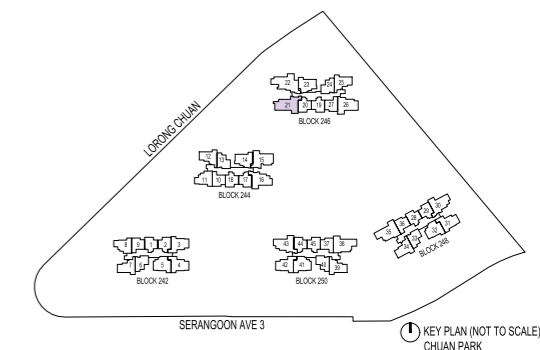
## Type D2-U

Area: 156 sqm  
 Blk 246 #22-21



- LEGEND
- DB: Distribution Board
  - AC LEDGE: Air-Conditioner Ledge
  - F: Fridge
  - W: Washer cum dryer machine
  - ⊠: Non-Strata Area (Void)

Area includes AC ledge, balcony/ PES and Strata Void over Living/ Dining space.  
 RC ledge and non- strata void are excluded from the strata area



KEY PLAN (NOT TO SCALE)  
 CHUAN PARK

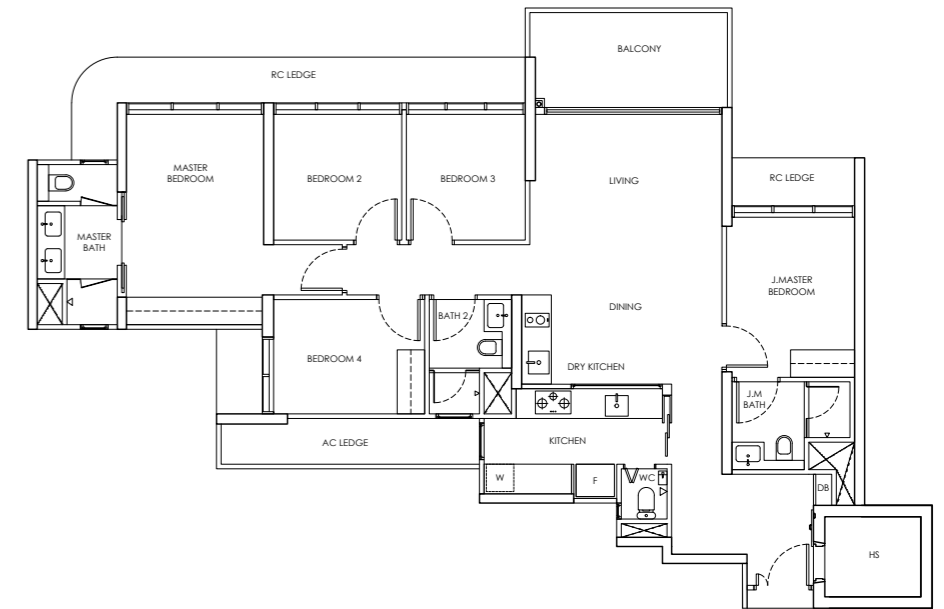


BESPOKE  
SPACES FOR  
BELOVED  
MOMENTS

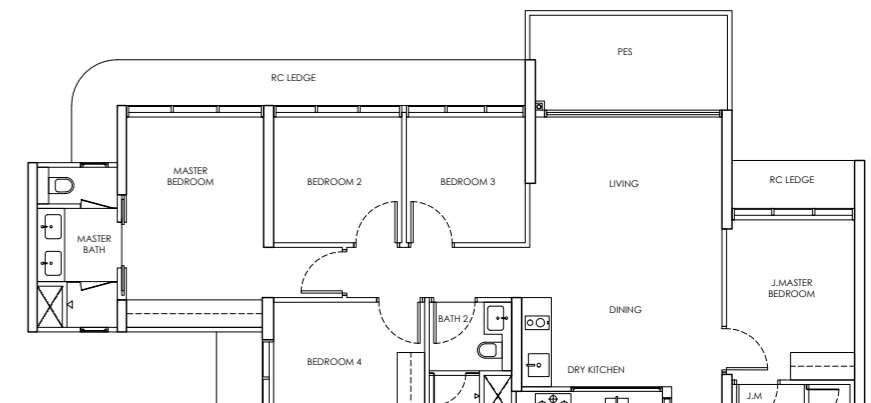
For Illustration Purposes

# 5-BEDROOM

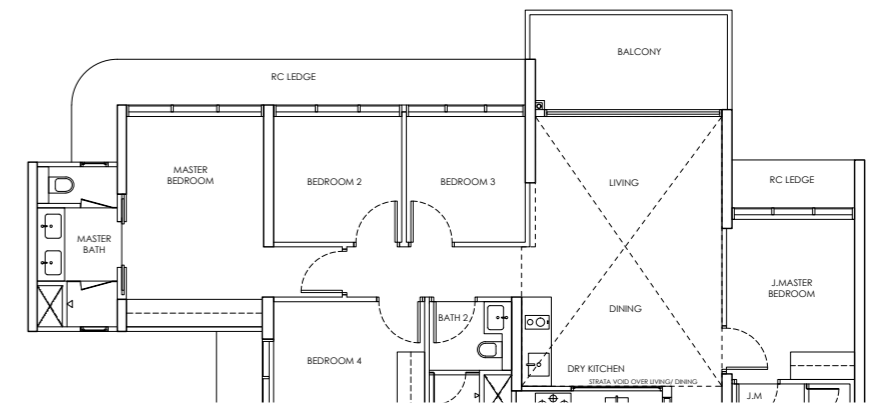
Type E1  
Area: 144 sqm  
Blk 246 #02-22 to #21-22



Type E1-P  
Area: 144 sqm  
Blk 246 #01-22



Type E1-U  
Area: 171 sqm  
Blk 246 #22-22



- LEGEND
- DB: Distribution Board
  - AC LEDGE: Air-Conditioner Ledge
  - F: Fridge
  - W: Washer cum dryer machine
  - ☒: Non-Strata Area (Void)

Area includes AC ledge, balcony/ PES and Strata Void over Living/ Dining space.  
RC ledge and non-strata void are excluded from the strata area

